

DEPARTMENT

LEEDS DOCK

FLOOR PLANS

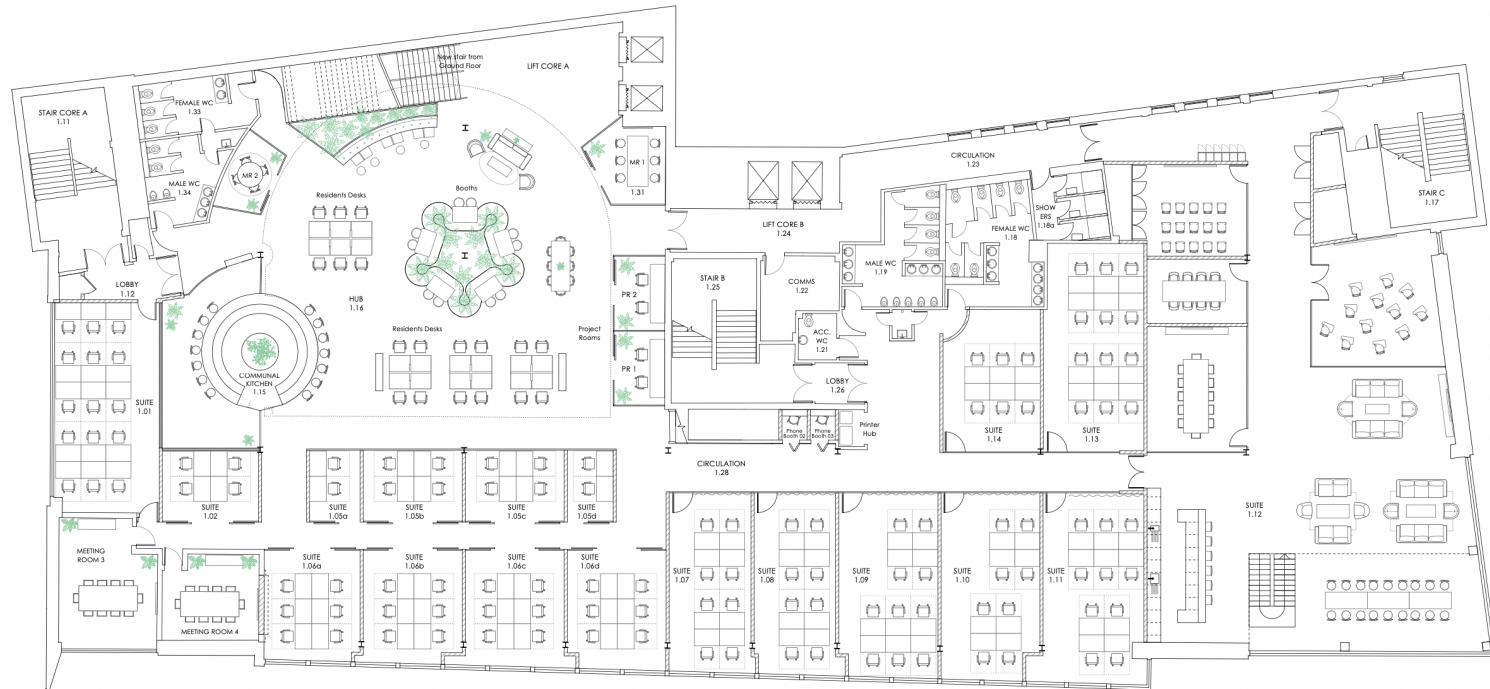


FIRST FLOOR

Resident Desks

- Suite 1.01 - 15 desks - 540sqft
- Studio 1.02 - 4 desks - 165sqft
- Studio 1.05a - 2 desks - 85sqft
- Studio 1.05b - 4 desks - 170sqft
- Studio 1.05c - 4 desks - 170sqft
- Studio 1.05d - 2 desks - 80sqft
- Suite 1.06a - 6 desks - 255sqft
- Suite 1.06b - 6 desks - 265sqft
- Suite 1.06c - 6 desks - 285sqft
- Suite 1.06d - 6 desks - 280sqft
- Suite 1.07 - 8 desks - 360sqft
- Suite 1.08 - 8 desks - 365sqft
- Suite 1.09 - 10 desks - 440sqft
- Suite 1.10 - 8 desks - 440sqft
- Suite 1.11 - 10 desks - 475sqft
- Studio 1.13 - 12 desks - 505sqft
- Studio 1.14 - 6 desks - 320sqft

- 1GB WIFI speed per floor
- Communal kitchen
- Unlimited tea & coffee
- Breakout areas
- Project rooms
- Phonebooths
- Showers



MEZZANINE

Hot Desks

Suite M.01 - 20 desks - 965sqft
Suite M.02 - 20 desks - 1015sqft
Suite M.03 - 20 desks - 1015sqft
Suite M.04 - 16 desks - 730sqft
Suite M.05 - 16 desks - 890sqft
Studio M.06 - 4 desks - 175sqft
Studio M.07 - 4 desks - 170sqft

- 1GB WiFi speed per floor
- Meeting rooms
- Project room
- Printing

