

**FOR LET
P.O.A**

Nelson House Bolton, BL1 1JT

- ✓ TOWN CENTRE LOCATION
- ✓ 5 FLOORS AVAILABLE
- ✓ STYLISH MODERN SPACE
- ✓ HIGH SPEC REFUBISHMENT
- ✓ PLUG & PLAY
- ✓ AVAILABLE NOW

TO VIEW CONTACT : LOLA HACKING

01204 282122 OR 07541570395

lola@toletbolton.co.uk

www.toletbolton.co.uk





DESCRIPTION

This beautiful and contemporary office has been refurbished to an exceptional standard, making it a perfect space for any business looking to capitalize on the convenience of a Central Bolton location for employees and customers, as well as offering a beautiful space to work.

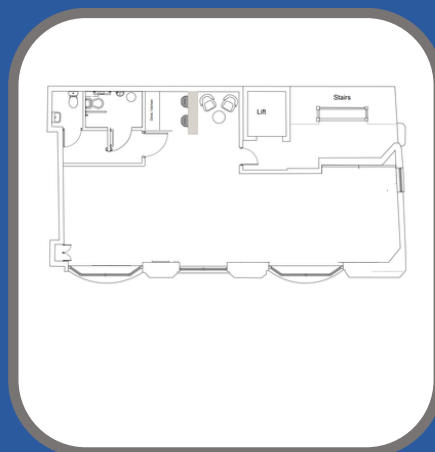
There are five floors available individually or as the whole building. Each floor is between 650-750 SQ FT and comes with its own stylish kitchenette, toilet facilities, open plan office and intercom access. The offices are available furnished and have super-fast broadband available, meaning you can move in and get working straight away.

- Flexible Terms Available
- 24/7 Access
- Secure & Alarmed with Intercom
- LED lighting

LAYOUT



SITE PLAN



FLOOR PLAN



MAP

LOCATION

Located in the centre of Bolton on the Corner of Nelson square and Bradshawgate. Nelson square, has residential and professional tenants as well as being a busy night-time area with venues and bars. Bradshawgate has a steady stream of vehicle traffic making Nelson House a prominent and known location.

Bolton centre is currently undergoing lots of investment especially within the town centre. It has fantastic transport links with the bus and train station within a few minutes walk and the motorway network within easy access.

- 5x Floors Approx. 750 SQ FT
- Service Charge: TBC
- Buildings Insurance: TBC