



Different Wall Types - refer to drawing W038-S-DR-818

- W1 General Stud Wall - (with Insulation)
- W2 150mm composite wall panel
- W3 150mm composite wall panel (with stud lining)
- W4 Lift shaft precast conc' wall & liner
- W5 Wall Liner
- W6 Column Liner

- Indicative Above Ground Drainage Positions:-
Internal Drainage 'pop-up' locations added as advised on MBA's Drawing: 20-246-M-780
- Drainage Stack
 - Drainage Stack from Above
 - Rodding Eye
 - Floor Gully
 - Drainage Pipework

Rev C5: Additional Dims added as requested. HM - 11.12.2022
 Rev C4: Lift Shaft adjusted. HM - 01.12.2022
 Rev C3: Whitewall Thickness updated. Internal Drainage 'pop-up' locations added as advised on MBA's Drawing: 20-246-M-780. Drainage stack positions slightly tweaked to a more suitable location / differs from MBA's positioning. Layout to be reviewed with EirEng; Additional Setting Out Dims. Added to Stair. HM - 30.11.2022
 Rev C2: Door Numbers adjusted to suit Door Schedule. HM - 20.09.2022
 Rev C1: Construction Issue. HM - 12.08.2022

Drawing Status: CONSTRUCTION

CMP Architects

Client



Project: Beatty Road, Waltham Cross

Title: Unit 4 First Floor Level Core/ Office Plan

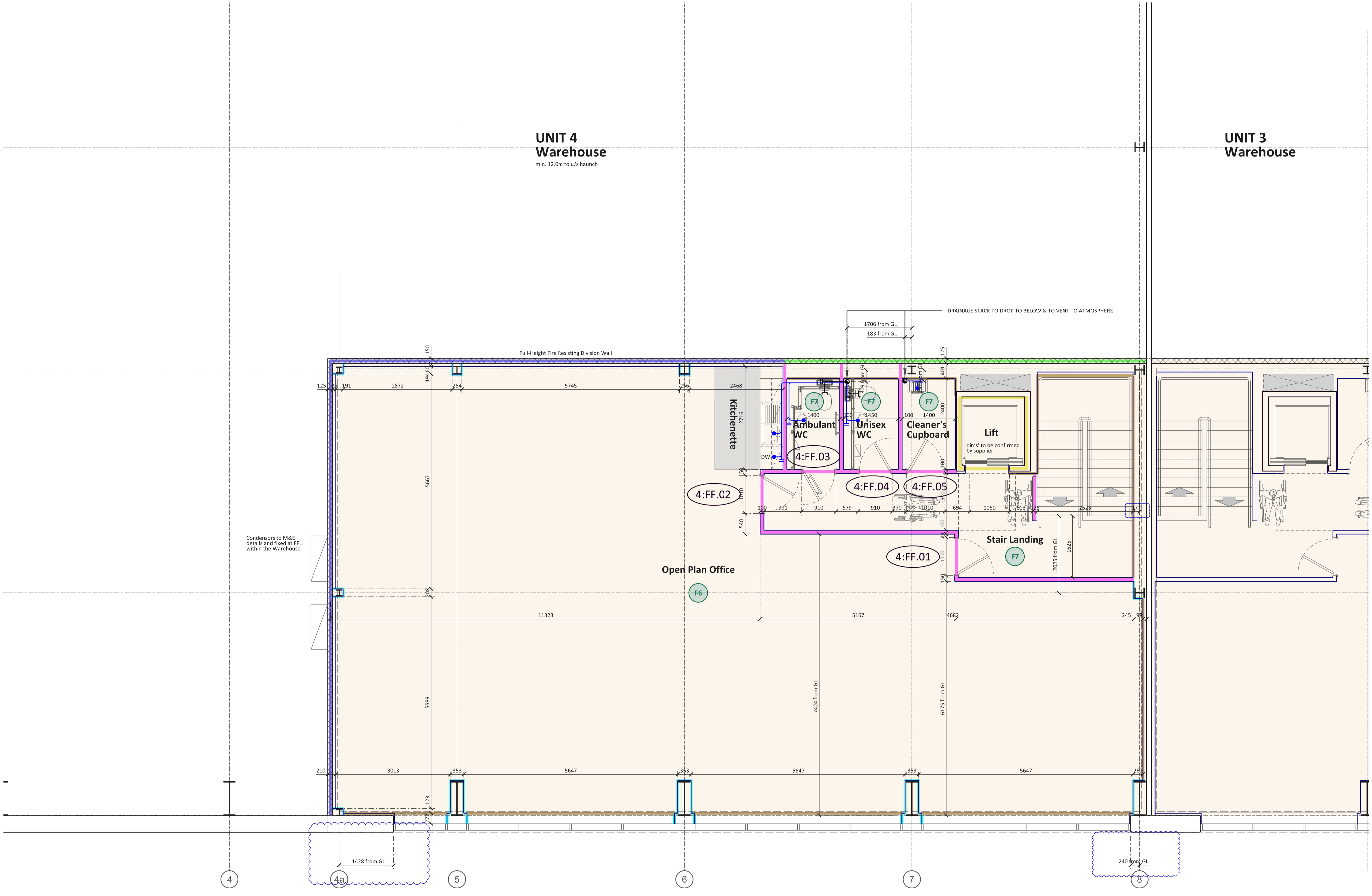
Scale: 1:50@A1 / 1:100@A3 Drawn: HM Date: 01.08.2022

Drng. No. W038-U4-DR-151 Revision C5

Do not scale from this drawing, use figured dimensions only. Subject to accurate site survey. All dimensions to be checked and verified for any discrepancies. All drawings to be read in conjunction with all CMP Architects and other consultants' contract documentation. Any discrepancies to be reported before any work commences. All items installed by others are to be fully site coordinated and programmed with the Contractor. All products to be installed to manufacturers recommendations.
 ©Copyright CMP Architects Ltd

UNIT 4 Warehouse
min. 12.0m to u/s haunch

UNIT 3 Warehouse



Unit 4 - First Floor Level Core/ Office Plan