

NOTES:
 SUBJECT TO STATUTORY CONSENTS
 SUBJECT TO SURVEY
 BASED ON OS MAP REPRODUCED BY PERMISSION OF CONTROLLER OF HM STATIONARY OFFICE (c) CROWN COPYRIGHT
 COPYRIGHT RESERVED
 DO NOT SCALE THIS DRAWING
 DETERMINE DIMENSIONS UNLESS SPECIFICALLY AUTHORIZED BY MICHAEL SPARKS ASSOCIATES
 IF USING AN ELECTRONIC VERSION OF THIS DRAWING FIGURED DIMENSIONS TAKE PRECEDENCE AND NOTIFY MICHAEL SPARKS ASSOCIATES OF ANY DISCREPANCIES
 PROVIDE ONE HOUR FIRE PROTECTION TO UPPER FLOORS CONSTRUCTION AND ONE HOUR FIRE PROTECTION TO SUPPORTING STRUCTURE
 COMPLY WITH ALL PARTS OF APPROVED DOCUMENTS IN PARTICULAR PART 8, PART L2 AND PART M.
 ENSURE SEALING OF ALL JUNCTIONS TO COMPLY WITH PART L.

U-Values	W/m ² K	NOTE
Roof:	0.18	ROOF AND WALL CLADDING TO BE DESIGNED BY SPECIALIST CONTRACTOR.
Ground Floors:	0.25	CLADDING DETAILS TO BE READ IN CONJUNCTION WITH THE SPECIFICATION AND ALL RELEVANT BRITISH STANDARDS.
Walls:	0.26	INCLUDE VAPOUR BARRIER TAPE AROUND ALL OPENINGS AND JUNCTIONS.
Glazing:	1.50	
Rooflights:	1.3	
Entrance Door:	1.7	
Loading Doors:	0.5	

ALL DIMENSIONS TO BE CHECKED ON SITE.
 STEEL COLUMN SIZES TO BE CONFIRMED AND TOLERANCES TO BE AGREED.

ROOF SPECIFICATION:
 CA TWINTHERM (U VALUE 0.18W/MK2)
 OUTER SHEETS TO BE CA32/1000R PROFILE 0.7 THK. HPS200 COATED TO RIB FACE 18-B-17 ALBATROSS. LINING PANELS TO BE CALT17/1000S PROFILE 0.4 THK. BRIGHT WHITE ENAMEL, FIXED IN THE PURLIN. 'THERMA QUILT' INSULATION.

PRESSED METAL FASCIA SECRET FIXED COLOUR PRISMA SIRIUS. SOFFIT 0.7mm CA 32/1000W SOFFIT SHEET

HORIZONTALLY LAID SINUSOIDAL PROFILED METAL BUILT-UP CLADDING SYSTEM, COMPRISING:
 TATA COLOURCOAT PRISMA SIRIUS RAL 9006 COATED GALVANISED STEEL PROFILED OUTER SHEET
 INSULATION QUILT TO GIVE U-VALUE OF 0.26W/M²K
 PROFILED GALVANISED STEEL BRIGHT WHITE LINER SHEET
 ACCESSORIES AS RECOMMENDED BY CLADDING MANUFACTURER

HIGH LEVEL HORIZONTAL PRESSED METAL FEATUREBAND COLOUR: GREEN RAL 6016

AEROFOIL FIN FIXED SOLAR SHADING SYSTEM
 EXTERNAL SUNBREAKER FIN SYSTEM TO HAVE POLYESTER POWDER COATED ALUMINIUM AEROFOIL FIN. COLOUR TO BE SILVER METALLIC RAL 9006. FIN TO BE 350MM WITH FRAMEWORK AND SUPPORT SYSTEM TO SUIT.

FIN MANUFACTURED FROM EXTRUDED ALUMINIUM SECTIONS WITH ALUMINIUM END-CAPS, ALL OF WHICH TO BE POLYESTER POWDER COATED, STAINLESS STEEL FASTENINGS AND FIXINGS TO BE USED THROUGHOUT, TO PRODUCE A VIRTUALLY MAINTENANCE FREE AND CORROSION-RESISTANT SYSTEM.

SYSTEM TO BE SUPPLIED AND INSTALLED BY SPECIALIST SUBCONTRACTOR.

PRIME SFX RAINSCREEN CLADDING SYSTEM, COLOUR PRISMA ZEUS
 METALLIC DARK GREY COMPLETE WITH TWIN-THERM® BACKING WALL SYSTEM UTILISING PPC COATED ALUMINIUM EXTERNAL PANELS

SOLAR SHADING - POWDER COATED ALUMINIUM HORIZONTAL METAL SHEET COLOUR SILVER METALLIC RAL 9006, FIXED TO CHS METAL POST

THE CURTAIN WALLING AND GLAZING SYSTEM SHOWN TO THE WAREHOUSE ELEVATIONS WILL UTILISE RECYCLED ALUMINIUM (MINIMUM 35% BY VOLUME) AND WILL BE SCHUCO OR AN EQUAL AND APPROVED ALTERNATIVE, FULLY THERMALLY BROKEN SYSTEM COMPRISING POLYESTER POWDER COATED ALUMINIUM MULLIONS AND TRANSOMS COMPLETE WITH FACTORY SEALED DOUBLE GLAZED UNITS WITH GLAZED AND INSULATED SPANDREL PANELS, WHERE NECESSARY.

EXTERNAL GLAZING WILL BE IN 6 MM ANTISUN (GREEN TINTED) ON CLEAR GLASS OUTER PANE OR SIMILAR APPROVED, 16 MM ARGON FILLED SPACE AND 6 MM 'LOW E' CLEAR INNER PANE TO ACHIEVE A U VALUE OF 1.5 W/M² K FOR THE OVERALL GLAZING INCLUDING FRAME. SPANDREL PANELS, WHERE NECESSARY, WILL BE IN ULTRA WARM PERMAWALL OR SIMILAR, INSULATED PANELS.

OPENING WINDOWS ON THE BASIS OF 1 IN 3 GLAZED UNITS WILL BE GENERALLY 'TOP HUNG' WITH LOCKABLE HANDLES, TILT AND TURN TO BE CONSIDERED IN LOCATIONS WITH NO OTHER MEANS OF ACCESS FOR MAINTENANCE AND CLEANING. ALL WINDOWS TO BE IN COMPLIANCE WITH THE CDM REGULATIONS RELATING TO ACCESS FOR CLEANING AND MAINTENANCE OF WINDOWS AND CURTAIN WALLING ALL IN ACCORDANCE WITH BRITISH STANDARDS RECOMMENDATIONS. RESTRICTORS WILL BE UTILISED TO AVOID CONFLICTS WITH PEDESTRIANS AND OBSTRUCTIONS

TILED FINISH ON SCREED ON INSULATION

PROPRIETARY STAINLESS STEEL RAINWATER OUTLET

SIDE FIXED BRUSHED STAINLESS STEEL BALUSTRADES FIXED TO RC UPSTAND TO SUBCONTRACTOR DESIGN.

2mm PPC ALUMINIUM FLASHING COLOUR: METALLIC SILVER RAL 9006 FIXED TO GALVANISED STEEL SUPPORT FRAME TO SUBCONTRACTOR DETAILS

150MM THICK COMPOSITE DECK TO SPECIALIST SUB-CONTRACTORS DESIGN AND SPECIFICATION.

INTERLOCKING SECRET FIX PLANK PROFILE TO SOFFIT: PRISMA COLOURCOAT SIRIUS (RAL 9006). FIXED TO GALVANISED STEEL SUPPORT FRAME TO SUBCONTRACTOR DETAILS PRESSED METAL 300MM WIDE CASSETTE MODULE SOFFIT, SECRET FIXED, LAID FRONT TO BACK, COLOUR RAL 9006. THICKNESS TO ENSURE NO RIPPING OR UNDULATION.

FINISH TO COLUMNS SHERWIN-WILLIAMS PAINTS. TOP COAT TO BE RESISTEX C137V2 SPECIAL FINISH SPRAY APPLIED WITH PRIMER AND TWO INTERMEDIATE COATS SPECIFIED BY THE SUPPLIER TO MEET 20 YEAR LIFE SPAN BEFORE FIRST MAJOR MAINTENANCE. COLOUR SILVER METALLIC RAL 9006

2mm PPC ALUMINIUM FLASHING TO RAKED DOWNSTAND BEAMS COLOUR: RAL 9006 FIXED TO GALVANISED STEEL SUPPORT FRAME TO SUBCONTRACTOR DETAILS

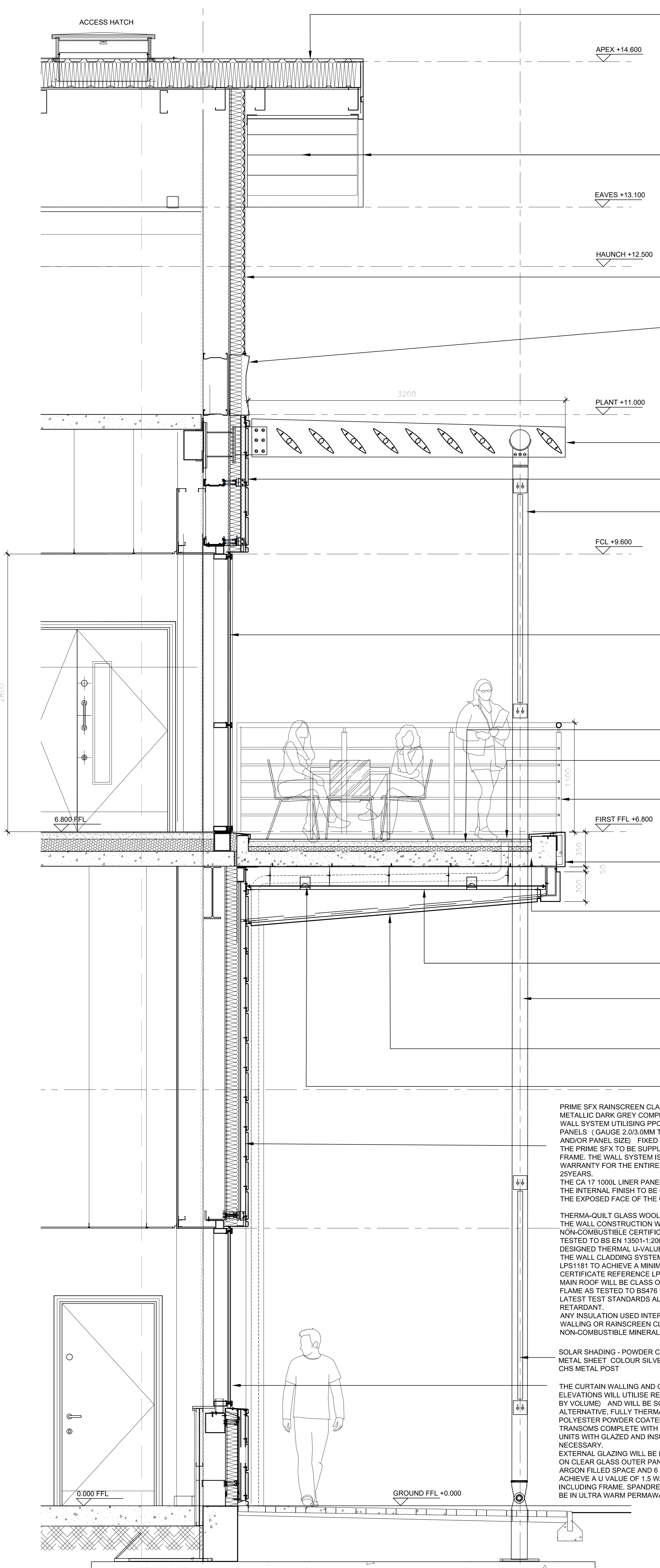
SOFFIT MOUNTED RECESSED EXTERIOR LED DOWNLIGHTS (2NO. PER LENGTH OF SOFFIT) TO M+E DESIGN

PRIME SFX RAINSCREEN CLADDING SYSTEM, COLOUR PRISMA ZEUS
 METALLIC DARK GREY COMPLETE WITH TWIN-THERM® BACKING WALL SYSTEM UTILISING PPC COATED ALUMINIUM EXTERNAL PANELS (GAUGE 2.0/3.0MM THICK SUBJECT TO ORIENTATION AND/OR PANEL SIZE) FIXED AS PER THE SYSTEM REQUIREMENTS. THE PRIME SFX TO BE SUPPLIED WITH AN ADJUSTABLE SUPPORT FRAME. THE WALL SYSTEM IS TO PROVIDE A MANUFACTURER'S WARRANTY FOR THE ENTIRE INSTALLATION FOR A PERIOD OF 25 YEARS.
 THE CA 17 1000L LINER PANEL WILL BE MINIMUM 0.4MM THICK WITH THE INTERNAL FINISH TO BE CA COLORCOAT® HIGH REFLECT TO THE EXPOSED FACE OF THE CLADDING LINING PANEL.

THERMA-QUILT GLASS WOOL INSULATION TO BE UTILISED WITHIN THE WALL CONSTRUCTION WITH A EUROCLASS 'A1' NON-COMBUSTIBLE CERTIFICATION FOR REACTION TO FIRE WHEN TESTED TO BS EN 13501-1:2007+A1:2009 AND TO ACHIEVE A MINIMUM DESIGNED THERMAL U-VALUE OF 0.26W/M²K (160MM THICK) THE WALL CLADDING SYSTEMS ARE TESTED IN ACCORDANCE WITH LPS1181 TO ACHIEVE A MINIMUM GRADE 'EXT-B' CERTIFICATION, CERTIFICATE REFERENCE LPCB 443A. THE INTERNAL LINING TO THE MAIN ROOF WILL BE CLASS 0 RATING FOR SURFACE SPREAD OF FLAME AS TESTED TO BS476 PART 7:1997. IN ACCORDANCE WITH THE LATEST TEST STANDARDS ALL LINER FILLERS TO BE FLAME RETARDANT.
 ANY INSULATION USED INTERNALLY IN DRY LININGS, CURTAIN WALLING OR RAINSCREEN CLADDING ELEMENTS SHALL BE NON-COMBUSTIBLE MINERAL FIBRE.

SOLAR SHADING - POWDER COATED ALUMINIUM HORIZONTAL METAL SHEET COLOUR SILVER METALLIC RAL 9006, FIXED TO CHS METAL POST

THE CURTAIN WALLING AND GLAZING SYSTEM SHOWN TO THE ELEVATIONS WILL UTILISE RECYCLED ALUMINIUM (MINIMUM 35% BY VOLUME) AND WILL BE SCHUCO OR AN EQUAL AND APPROVED ALTERNATIVE, FULLY THERMALLY BROKEN SYSTEM COMPRISING POLYESTER POWDER COATED ALUMINIUM MULLIONS AND TRANSOMS COMPLETE WITH FACTORY SEALED DOUBLE GLAZED UNITS WITH GLAZED AND INSULATED SPANDREL PANELS, WHERE NECESSARY.
 EXTERNAL GLAZING WILL BE IN 6 MM ANTISUN (GREEN TINTED) ON CLEAR GLASS OUTER PANE OR SIMILAR APPROVED, 16 MM ARGON FILLED SPACE AND 6 MM 'LOW E' CLEAR INNER PANE TO ACHIEVE A U VALUE OF 1.5 W/M² K FOR THE OVERALL GLAZING INCLUDING FRAME. SPANDREL PANELS, WHERE NECESSARY, WILL BE IN ULTRA WARM PERMAWALL OR SIMILAR, INSULATED PANELS.



01 275 TYPICAL SECTION THROUGH OFFICE BALCONY - UNIT 1

1:20



<h1>TENDER</h1>			
REV	DATE	NOTE	
-	29.08.23	FIRST ISSUE.	
			NSC MS DRAW CHCK




CHARTERED ARCHITECTS

11 PLATO PLACE
 STJOHNS ROAD
 LONDON SW6 4TU

TELEPHONE 020 7736 6162
 www.msa-architects.co.uk

TITLE
LAND OFF GREEN LANE, HEMEL HEMPSTEAD

DRAWING
DETAIL SECTION THROUGH BALCONY UNIT 1

CLIENT
PROLOGIS UK LTD

DATE	SCALE	DRAWN
AUGUST 2023	1:20@A1	NSC
	STATUS	CHECKED
	TENDER	MS

DRAWING NUMBER
31325-PL-275