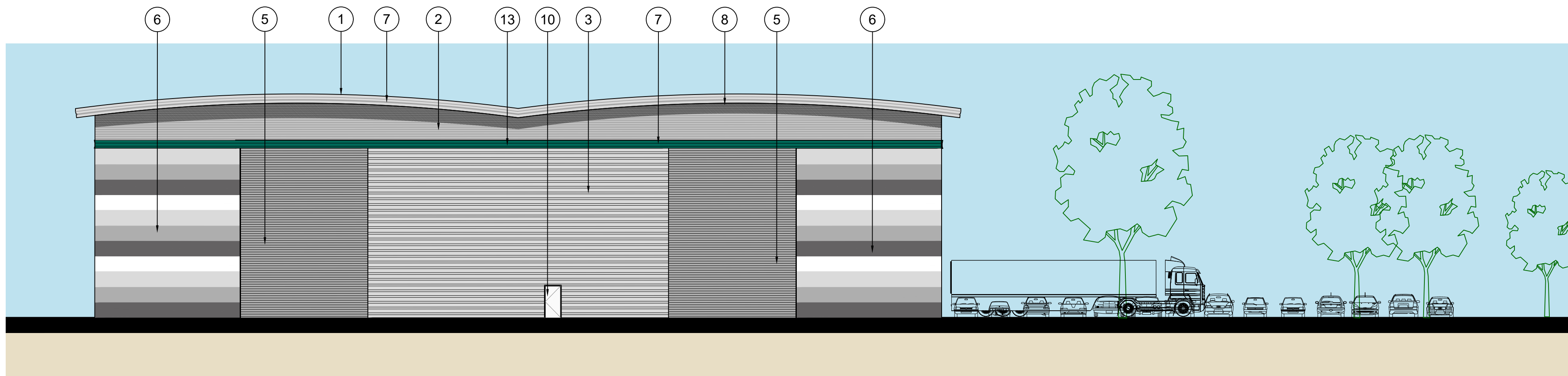


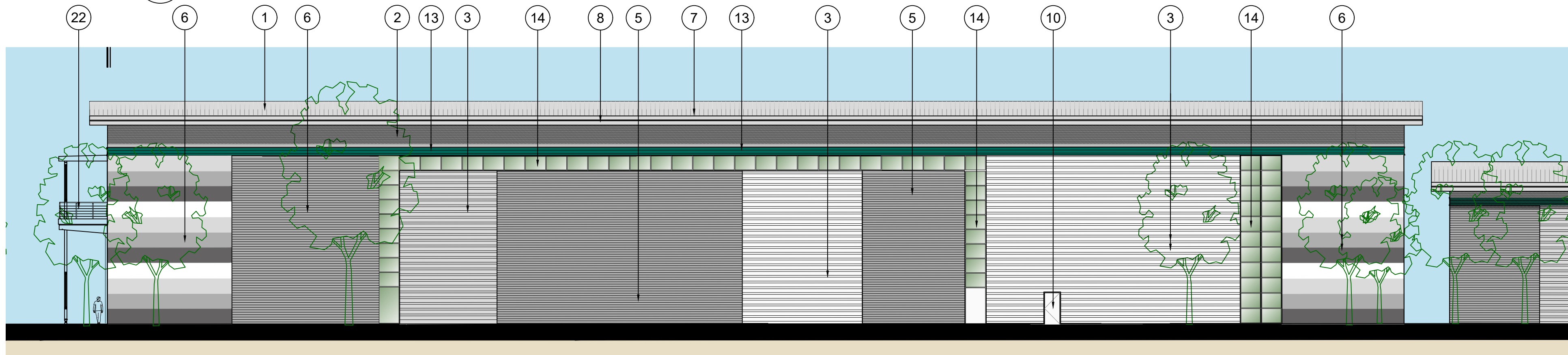
01 UNIT 2 - SOUTH ELEVATION
242

1:200



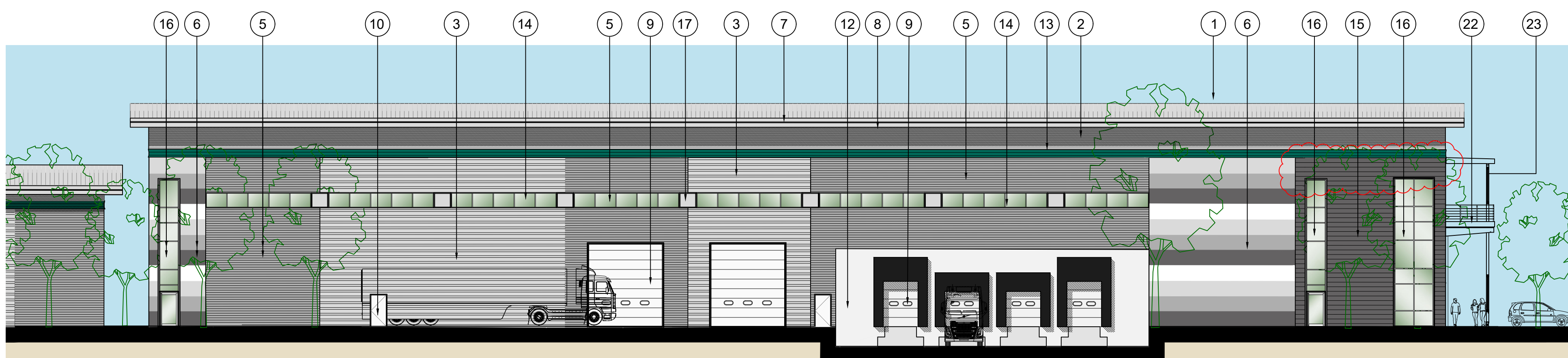
02 UNIT 2 - NORTH ELEVATION
242

1:200



03 UNIT 2 - EAST ELEVATION
242

1:200



04 UNIT 2 - WEST ELEVATION
242

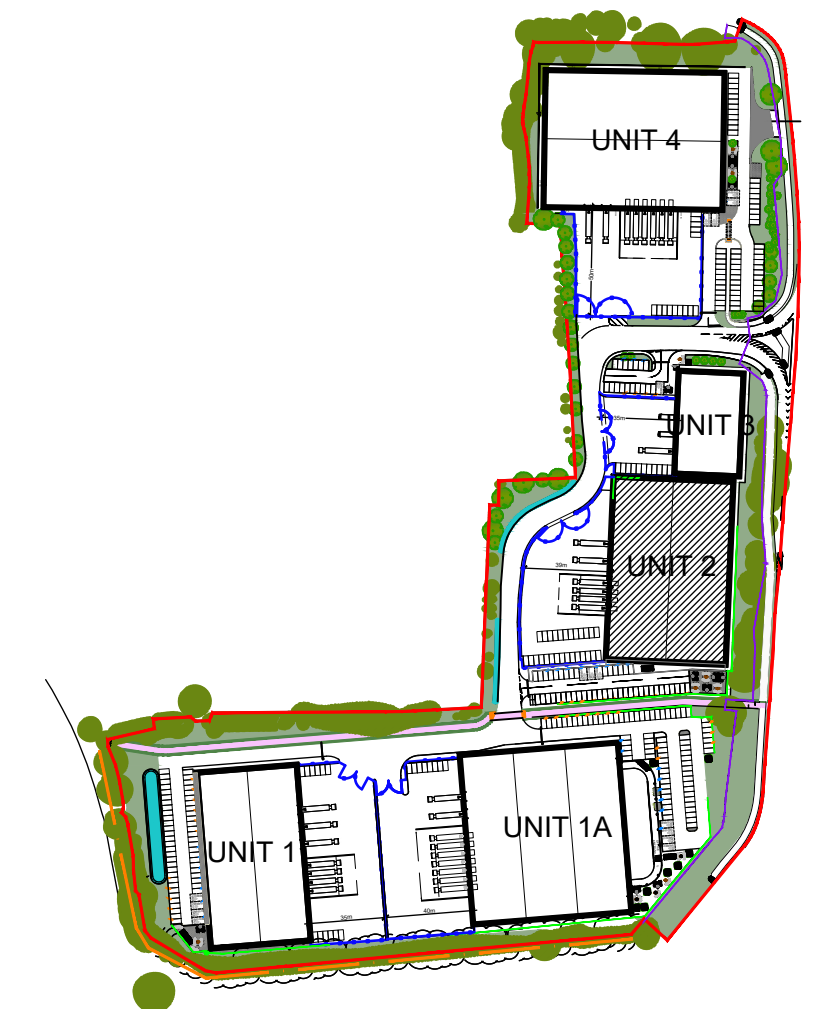
1:200

SCHEDULE OF EXTERNAL FACING MATERIALS

UNIT	
1	ROOF FULLY INSULATED BUILT UP ROOF SYSTEM COLOUR: HPS 200 ALBATROSS
2	WALL CLADDING 1 FULLY INSULATED SINUSOIDAL PROFILED CLADDING PANELS LAID HORIZONTALLY COLOUR-PRISMA SIRIUS (RAL 9006) METALLIC FINISH
3	WALL CLADDING 2 FULLY INSULATED HALF ROUND PROFILED CLADDING PANELS LAID HORIZONTALLY, COLOUR - PRISMA SIRIUS (RAL 9006) METALLIC FINISH
4	WALL CLADDING 3 FULLY INSULATED HALF ROUND PROFILED CLADDING PANELS LAID HORIZONTALLY COLOUR - PRISMA ZEUS METALLIC FINISH
5	WALL CLADDING 4 FULLY INSULATED SINUSOIDAL PROFILED CLADDING PANELS LAID HORIZONTALLY COLOUR - PRISMA ORION RAL 9007 METALLIC FINISH
6	WALL CLADDING 5 FULLY INSULATED 1000mm MODULE MINI MICROBIE CLADDING PANELS LAID HORIZONTALLY COLOUR - PRISMA WHITE RAL 9010, SIRIUS RAL 9006, ORION RAL 9007, ZEUS METALLIC FINISH
7	ROOF OVERHANG FASCIA FASCIA PRISMA SILVER METALLIC RAL 9006
8	ROOF OVERHANG SOFFIT PRESSED METAL SHEET SOFFIT COLOURCOAT PRISMA SIRIUS RAL 9006
9	LOADING DOORS STUCCO FINISHED COMPOSITE DOORS RAL 9006
10	PERSONNEL/ FIRE EXIT DOORS COATED STEEL DOORS - PRISMA ORION RAL 9007
11	JOINTS & CORNER FLASHING RECESSED 150MM WIDE VERTICAL FLASHING FINISH: TO MATCH TATA COLORCOAT PRISMA COLOUR/SIRIUS RAL 9006
12	DOCK WALLS PRO-WALL PRECAST CONCRETE WALLING SYSTEM TO ALL DOCK AREAS
13	FEATURE BAND HIGH LEVEL HORIZONTAL PRESSED METAL CRANKED FEATUREBAND COLOUR: HPS 200 ULTRA GREEN RAL 9016
14	FEATURE GLAZING GREEN TINTED SUNCOOL TOUGHENED GLASS IN POLYESTER POWDER COATED ALUMINIUM CURTAIN WALLING SYSTEM COLOUR DARK GREY RAL 7016
OFFICE	
15	METAL CLADDING 1 CA PRIME SFX CLADDING SYSTEM (300 MM MODULE) LAID HORIZONTALLY COLOUR- PRISMA ZEUS
16	CURTAIN WALLING, WINDOWS & ENTRANCE DOORS GREEN TINTED SUNCOOL TOUGHENED GLASS IN POLYESTER POWDER COATED ALUMINIUM CURTAIN WALLING SYSTEM COLOUR DARK GREY RAL 7016
17	INFILL PANEL FULLY INSULATED BACK PAINTED GLASS IN POLYESTER POWDER COATED ALUMINIUM CURTAIN WALLING SYSTEM. COLOUR: WHITE, RAL 9010
18	VERTICAL BRISE SOEIL ALUMINIUM BLADES ON SUPPORTING FRAMEWORK, WITH STEEL COLUMNS, FINISH: POLYESTER POWDER COAT COLOUR: RAL 9006 (METALLIC SILVER)
20	BRISE SOEIL POWDER-COATED ALUMINIUM HORIZONTAL AEROFIL FINS. COLOUR: RAL 9006 (METALLIC SILVER)
21	COLUMNS & BRISE SOEIL SUPPORT SHERWIN-WILLIAMS PAINTS. TOP COAT TO BE RESISTEX C137V2 SPECIAL FINISH SPRAY APPLIED WITH PRIMER AND TWO INTERMEDIATE COATS SPECIFIED BY THE SUPPLIER TO MEET 20 YEAR LIFE SPAN BEFORE FIRST MAJOR MAINTENANCE. COLOUR SILVER METALLIC RAL 9006
22	BALCONY BRUSHED STAINLESS STEEL BALUSTRADING AND METAL FASCIA RAL 9006 SILVER METALLIC WITH PORCELAIN TILE FLOORING
23	SOLAR SHADING BESPOKE POLYESTER POWDER COATED 3MM ALUMINIUM SHEET COLOUR SILVER METALLIC RAL 9006 ALL FIXINGS TO BE STAINLESS STEEL



NOTES:
SUBJECT TO STATUTORY CONSENTS
BASED ON OS MAP REPRODUCED BY PERMISSION OF CONTROLLER OF HM STATIONARY OFFICE (c) CROWN COPYRIGHT RESERVED
FOR PLANNING PURPOSES ONLY
INDIVIDUAL TREE LOCATIONS SHOWN FOR ILLUSTRATIVE PURPOSES ONLY
DO NOT USE ELECTRONIC VERSIONS OF THIS DRAWING TO DETERMINE DIMENSIONS UNLESS SPECIFICALLY AUTHORISED BY MICHAEL SPARKS ASSOCIATES
IF USING AN ELECTRONIC VERSION OF THIS DRAWING FIGURED DIMENSIONS TAKE PRECEDENCE AND NOTIFY MICHAEL SPARKS ASSOCIATES OF ANY DISCREPANCIES



05 KEY PLAN
242

NTS

REV	DATE	NOTE	DRAW	CHK
C	29.08.23	ELEVATIONS UPDATED IN ACCORDANCE WITH TENDER QUERIES	NSC	MS
PLANNING AND TENDER				
B	24.07.23	ELEVATIONS AMENDED	NSC	MS
A	06.06.23	ELEVATIONS AMENDED	NSC	MS
-	XX.XX.XX	FIRST ISSUE.	NSC	MS

MICHAEL SPARKS ASSOCIATES CHARTERED ARCHITECTS
11 PLATO PLACE
STODONS ROAD
LONDON SW6 4TU
TELEPHONE 020 7736 6162
FAX 020 7736 3896
www.msa-architects.co.uk

PROLOGIS

TITLE LAND OFF GREEN LANE, HEMEL HEMPSTEAD		
DRAWING UNIT 2 ELEVATIONS		
CLIENT PROLOGIS UK LTD		
DATE NOV 2022	SCALE 1:200@A1	DRAWN NSC
STATUS PLANNING/TENDER		CHECKED MS
DRAWING NUMBER 31325-PL-242C		