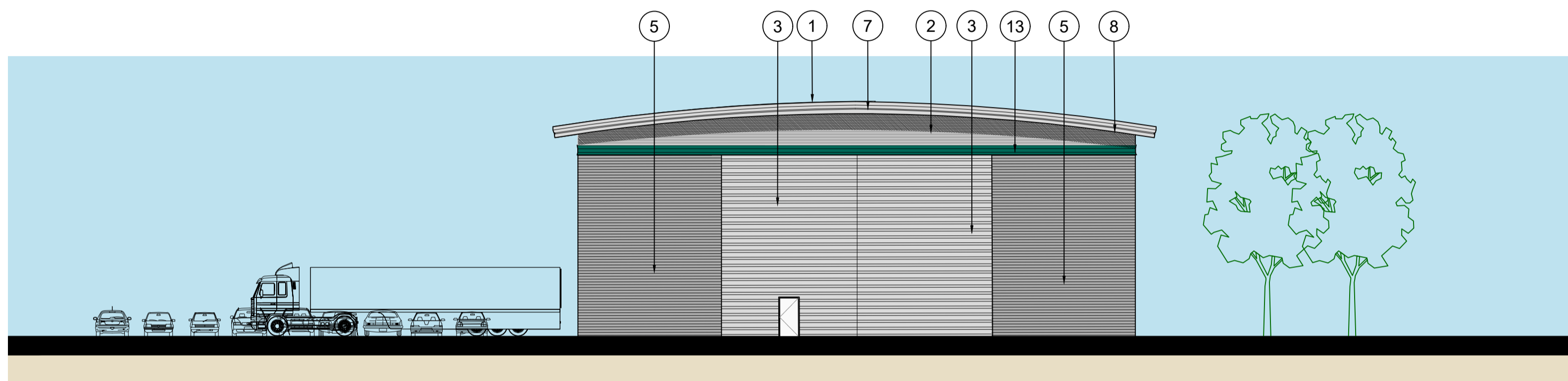
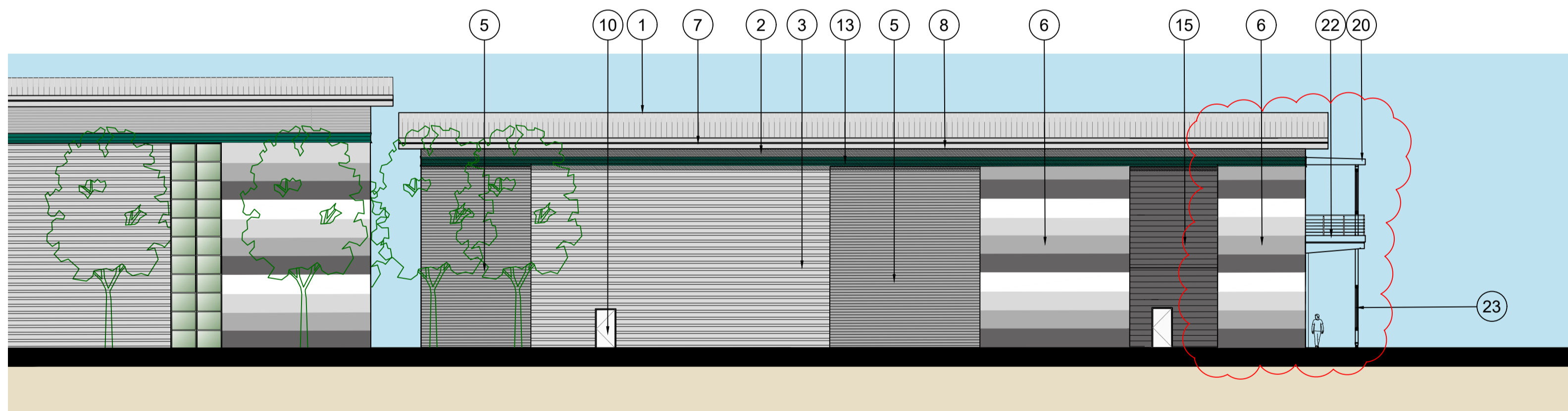


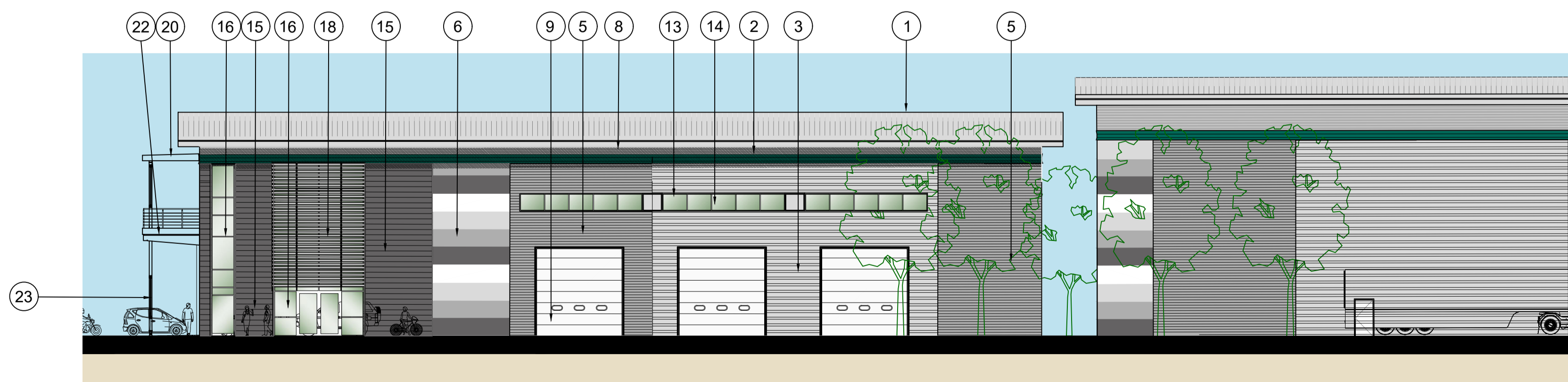
01 UNIT 3 - NORTH ELEVATION
243 1:200



02 UNIT 3 - SOUTH ELEVATION
243 1:200



03 UNIT 3 - EAST ELEVATION
243 1:200



04 UNIT 3 - WEST ELEVATION
243 1:200

SCHEDULE OF EXTERNAL FACING MATERIALS

UNIT	
1	ROOF FULLY INSULATED BUILT UP ROOF SYSTEM COLOUR: HPS 200 ALBATROSS
2	WALL CLADDING 1 FULLY INSULATED SINUSOIDAL PROFILED CLADDING PANELS LAID HORIZONTALLY COLOUR-PRISMA SIRIUS (RAL 9006) METALLIC FINISH
3	WALL CLADDING 2 FULLY INSULATED HALF ROUND PROFILED CLADDING PANELS LAID HORIZONTALLY COLOUR - PRISMA SIRIUS (RAL 9006) METALLIC FINISH
4	WALL CLADDING 3 FULLY INSULATED HALF ROUND PROFILED CLADDING PANELS LAID HORIZONTALLY COLOUR - PRISMA ZEUS METALLIC FINISH
5	WALL CLADDING 4 FULLY INSULATED SINUSOIDAL PROFILED CLADDING PANELS LAID HORIZONTALLY COLOUR - PRISMA ORION RAL 9007 METALLIC FINISH
6	WALL CLADDING 5 FULLY INSULATED 1000mm MODULE MINI MICRORB CLADDING PANELS LAID HORIZONTALLY COLOUR - PRISMA WHITE RAL 9010, SIRIUS RAL 9006, ORION RAL 9007, ZEUS METALLIC FINISH
7	ROOF OVERHANG FASCIA FASCIA PRISMA SILVER METALLIC RAL 9006
8	ROOF OVERHANG SOFFIT PRESSED METAL SHEET SOFFIT COLOUR/COAT PRISMA SIRIUS RAL 9006
9	LOADING DOORS STUCCO FINISHED COMPOSITE DOORS RAL 9006
10	PERSONNEL/FIRE EXIT DOORS COATED STEEL DOORS - PRISMA ORION RAL 9007
11	JOINTS & CORNER FINISH RECESSED 150MM WIDE VERTICAL FLASHING FINISH TO MATCH TAFA COLOUR/COAT PRISMA COLOUR:SIRIUS RAL 9006
12	DOCK WALLS PRO-WALL PRECAST CONCRETE WALLING SYSTEM TO ALL DOCK AREAS
13	FEATURE BAND HIGH LEVEL HORIZONTAL PRESSED METAL CRANKED FEATUREBAND COLOUR: HPS 200 ULTRA GREEN RAL 6016
14	FEATURE GLAZING GREEN TINTED SUNCOOL TOUGHENED GLASS IN POLYESTER POWDER COATED ALUMINIUM CURTAIN WALLING SYSTEM COLOUR: DARK GREY RAL 7016
OFFICE	
15	METAL CLADDING 1 CA PRIME SFX CLADDING SYSTEM (300 MM MODULE) LAID HORIZONTALLY COLOUR- PRISMA ZEUS
16	CURTAIN WALLING, WINDOWS & ENTRANCE DOORS GREEN TINTED SUNCOOL TOUGHENED GLASS IN POLYESTER POWDER COATED ALUMINIUM CURTAIN WALLING SYSTEM COLOUR DARK GREY RAL 7016
17	INFILL PANEL FULLY INSULATED, BACK PAINTED GLASS IN POLYESTER POWDER COATED ALUMINIUM CURTAIN WALLING SYSTEM, COLOUR: WHITE, RAL 9010
18	VERTICAL BRISE SOLEIL ALUMINIUM BLADES ON SUPPORTING FRAMEWORK, WITH STEEL COLUMNS, FINISH: POLYESTER POWDER COAT COLOUR: RAL 9006 (METALLIC SILVER)
20	BRISE SOLEIL POWDER-COATED ALUMINIUM HORIZONTAL AEROFIL FINS, COLOUR: RAL 9006 (METALLIC SILVER)
21	COLUMNS & BRISE SOLEIL SUPPORT SHERWIN-WILLIAMS PAINTS. TOP COAT TO BE RESISTEX C137/2 SPECIAL FINISH SPRAY APPLIED WITH PRIMER AND TWO INTERMEDIATE COATS SPECIFIED BY THE SUPPLIER TO MEET 20 YEAR LIFE SPAN BEFORE FIRST MAJOR MAINTENANCE. COLOUR SILVER METALLIC RAL 9006
22	BALCONY BRUSHED STAINLESS STEEL BALUSTRADING AND METAL FASCIA RAL 9006 SILVER METALLIC WITH PORCELAIN TILE FLOORING
23	SOLAR SHADING BESPOKE POLYESTER POWDER COATED 3MM ALUMINIUM SHEET COLOUR SILVER METALLIC RAL 9006 ALL FIXINGS TO BE STAINLESS STEEL.

NOTES:
SUBJECT TO STATUTORY CONSENTS
SUBJECT TO SURVEY
BASED ON OS MAP REPRODUCED BY PERMISSION OF CONTROLLER OF HM STATIONARY OFFICE (c) CROWN COPYRIGHT
COPYRIGHT RESERVED
FOR PLANNING PURPOSES ONLY
INDIVIDUAL TREE LOCATIONS SHOWN FOR ILLUSTRATIVE PURPOSES ONLY
DO NOT USE ELECTRONIC VERSIONS OF THIS DRAWING TO DETERMINE DIMENSIONS UNLESS SPECIFICALLY AUTHORISED BY MICHAEL SPARKS ASSOCIATES
IF USING AN ELECTRONIC VERSION OF THIS DRAWING FIGURED DIMENSIONS TAKE PRECEDENCE AND NOTIFY MICHAEL SPARKS ASSOCIATES OF ANY DISCREPANCIES



REV	DATE	NOTE	DRAW	CHECK
C	29.08.23	ELEVATIONS UPDATED IN ACCORDANCE WITH TENDER QUERIES	NSC	MS
PLANNING AND TENDER				
B	24.07.23	ELEVATIONS AMENDED	NSC	MS
A	06.06.23	ELEVATIONS AMENDED	NSC	MS
-	XX.XX.XX	FIRST ISSUE.	NSC	MS

MICHAEL SPARKS ASSOCIATES **PROLOGIS**
CHARTERED ARCHITECTS
11 PLATO PLACE
ST. DIONIS ROAD
LONDON SW6 4TU
TELEPHONE 020 7736 6162
FAX 020 7736 3886
www.msp-a-architects.co.uk

TITLE
LAND OFF GREEN LANE, HEMEL HEMPSTEAD
DRAWING
UNIT 3 ELEVATIONS
CLIENT
PROLOGIS UK LTD

DATE	SCALE	DRAWN
NOV 2022	1:200@A1	NSC
	STATUS	CHECKED
	PLANNING/TENDER	MS

DRAWING NUMBER
31325-PL-243C

