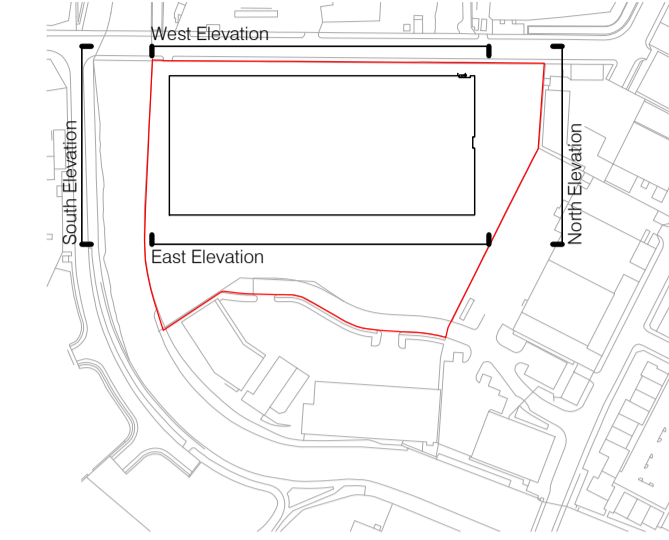
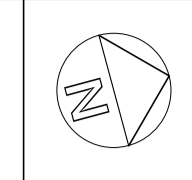


Scale 1: 250

Status

PLANNING



KEY PLAN

FINISHES LEGEND

- 1 Site assembled cladding vertically aligned Dark Grey
- 2 Composite cladding vertically aligned Dark Grey
- 3 Composite cladding vertically aligned Feature Colour
- 4 Site assembled roofing with factory assembled triple skinned rooflights Light Grey
- 5 Polyester powder coated aluminium windows and doors
- 6 Insulated section overhead doors Dark Grey
- 7 Insulated steel personnel doors Dark Grey
- 8 Precast insulated concrete wall panels
- 9 Galvanised steel canopy with planar glazing roof
- 10 Polyester powder coated aluminium louvred screen with matching gates

P05	REVISED CLADDING	23/08/21	RMW
P04	PLANNING APPLICATION	13/08/21	MJB
P03	2 NO. ADDITIONAL DOCK DOORS ADDED	06/07/21	MJB
P02	CLIENT NAME CORRECTED	11/06/21	CAP
P01	OPENING LIGHTS ADDED TO NORTH ELEVATION GLAZING AND WEST ELEVATION SIMPLIFIED	10/06/21	CAP

No. Revision Date Inits

Job

UNIT NH7, NEWHALL ROAD SHEFFIELD

Drawing
ELEVATIONS

Client
NEWSHOLME DEVELOPMENTS LTD

FRANK SHAW ASSOCIATES LIMITED ARCHITECTS

Penmore House Hasland Chesterfield Derbyshire S41 0SU
Tel 01246 233255 www.frankshawassociates.co.uk

Scale 1:250@A1 Drawn/Checked CAP

Job Number 20046 Date 03/06/21

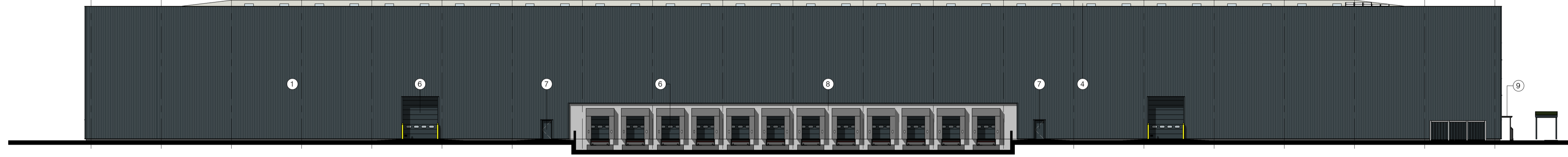
Drawing Number 20046-FSA-01-XX-DR-A-2000 Rev P05

1 2 3 4 5 6 6a 7 8 9 10 11 12 13



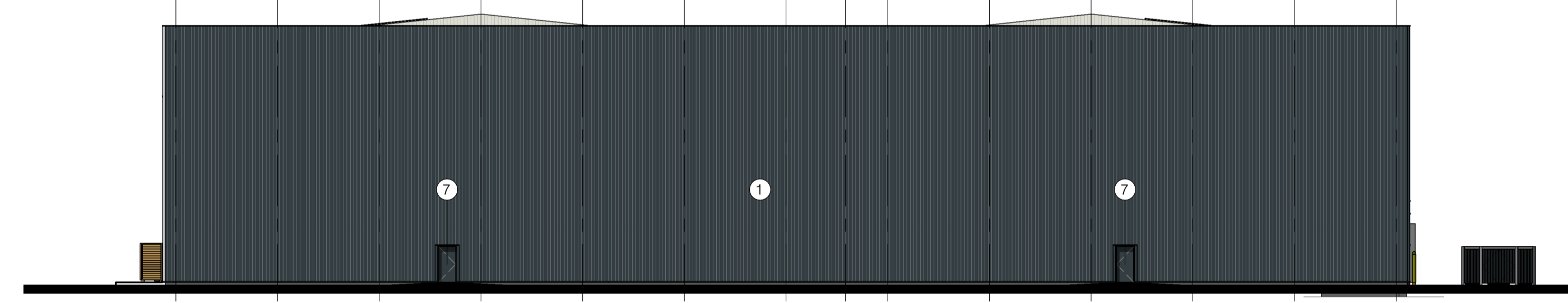
North Elevation

A B C D E F G H J K L M N P Q R S T U V W



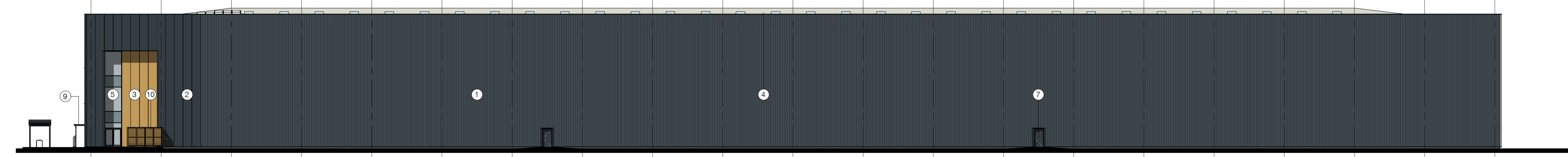
East Elevation

13 12 11 10 9 8 7 6a 6 5 4 3 2 1



South Elevation

W V U T S R Q P N M L K J H G F E D C B A



West Elevation