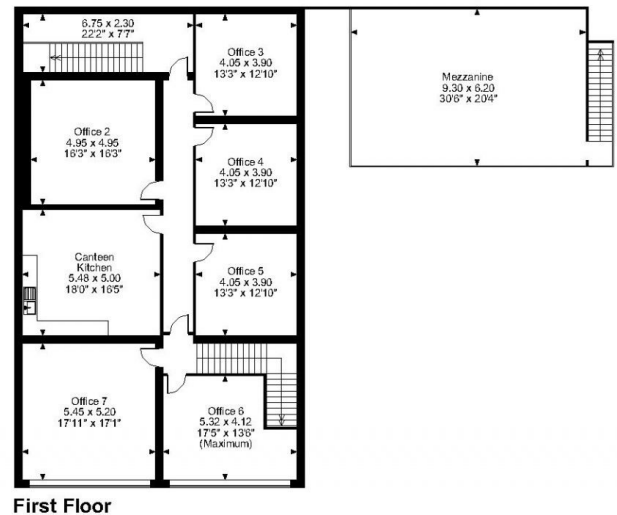
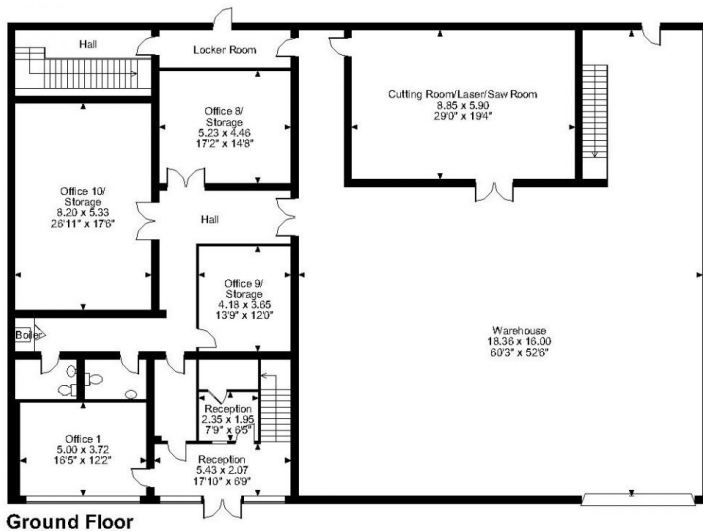
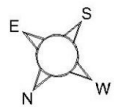


Floor Plans

Unit 27 - 7260 sq ft | **Primrose Hill Industrial Estate**

📍 Wingate Way, Stockton-On-Tees, TS19 0GA

Primrose Hill Industrial Estate, Unit 27, Wingate Way, Stockton-On-Tees
Approximate Gross Internal Area
8063 Sq Ft/749 Sq M



FOR ILLUSTRATIVE PURPOSES ONLY - NOT TO SCALE

The position & size of doors, windows, appliances and other features are approximate only.

© ehouse. Unauthorised reproduction prohibited. Drawing ref. dig/8584867/SS