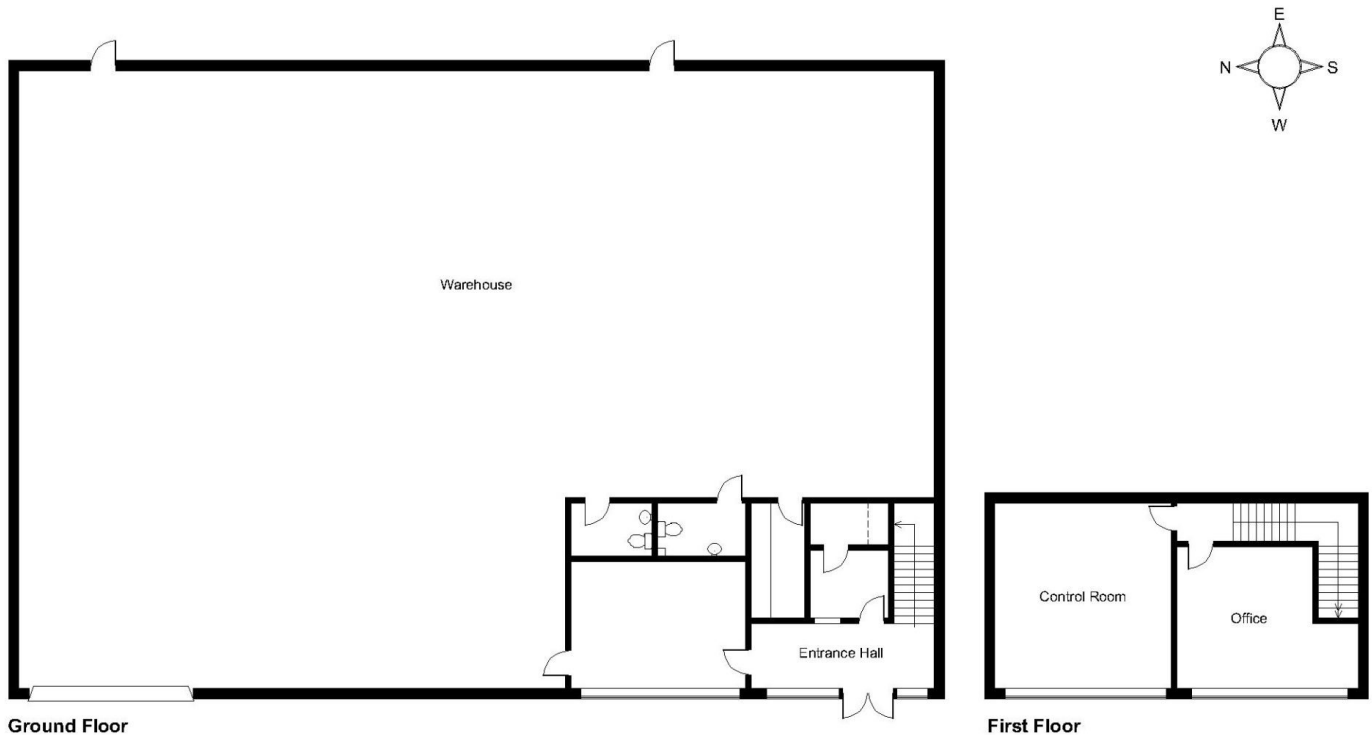


# Floor Plans

Unit 28 - 5754 sq ft | **Primrose Hill Industrial Estate**

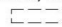
 Wingate Way, Stockton-On-Tees, TS19 0GA

**Primrose Hill Industrial Estate, Wingate Way, Stockton-On-Tees**



**FOR ILLUSTRATIVE PURPOSES ONLY - NOT TO SCALE**

The position & size of doors, windows, appliances and other features are approximate only.

 Denotes restricted head height

© ehouse. Unauthorised reproduction prohibited. Drawing ref. dig/8541496/SAK