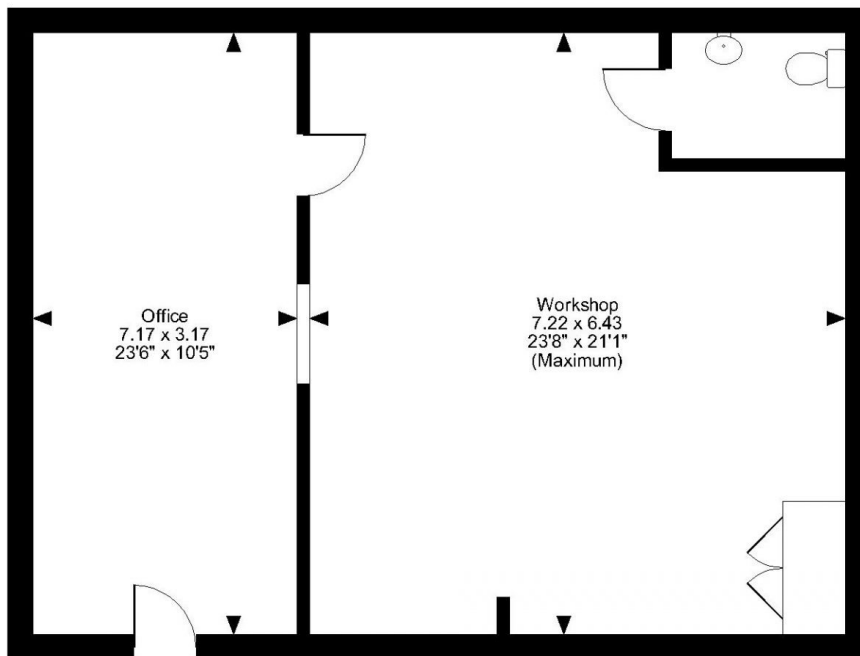
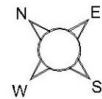


# Floor Plans

16 Carrock Road - 746 sq ft | **Croft Business Park**

 Carrock Road & Mosedale Road, Bromborough, CH62 3RA

**Croft Business Park, Unit 16 Ca, Carrock Road & Mosedale Road, Bromborough**  
Approximate Gross Internal Area  
758 Sq Ft/70 Sq M



**Ground Floor**

**FOR ILLUSTRATIVE PURPOSES ONLY - NOT TO SCALE**

The position & size of doors, windows, appliances and other features are approximate only.

© ehouse. Unauthorised reproduction prohibited. Drawing ref. dig/8585583/SHU