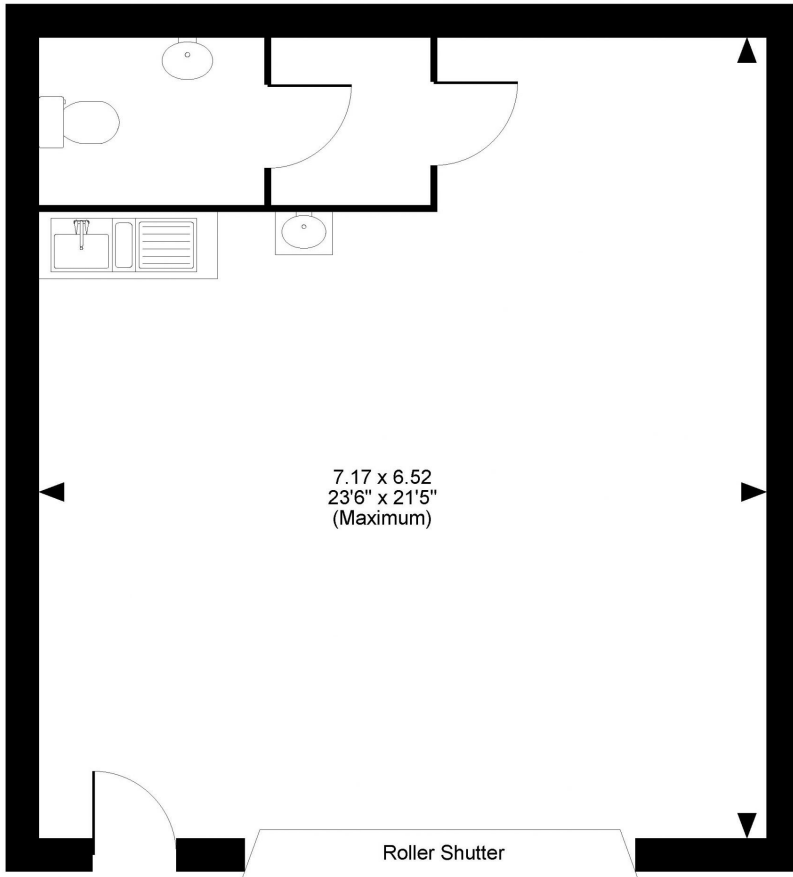
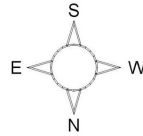


Floor Plans

23 Carrock Road - 503 sq ft | **Croft Business Park**

 Carrock Road & Mosedale Road, Bromborough, CH62 3RA

Unit 23, Carrock Road, Croft Business Park, Bromborough



FOR ILLUSTRATIVE PURPOSES ONLY - NOT TO SCALE

The position & size of doors, windows, appliances and other features are approximate only.

© ehouse. Unauthorised reproduction prohibited. Drawing ref. dig/8322920/SMA

enquiries@industrials.co.uk

 For more info please visit:
unit.info/UIP0100189

+440 808 169 7554