
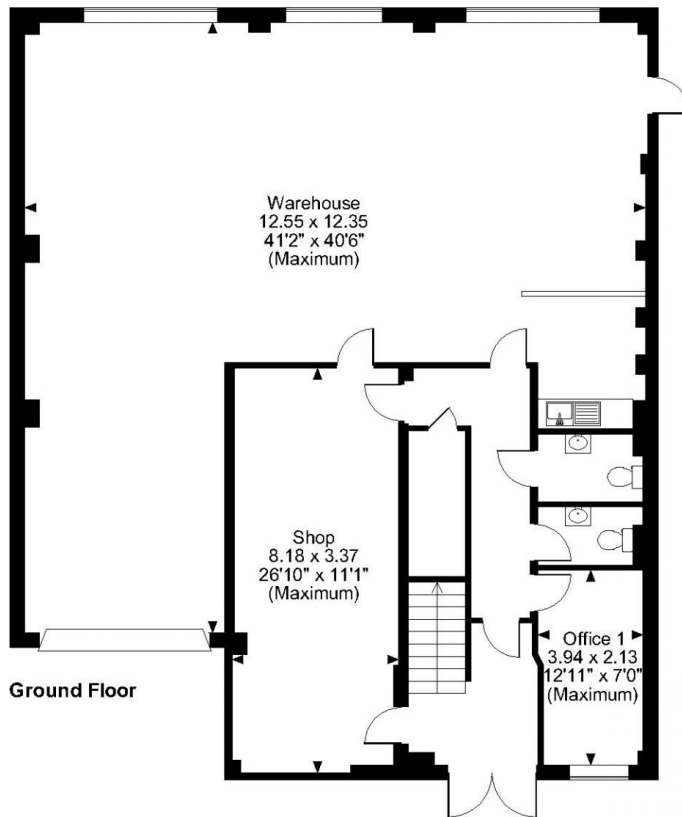


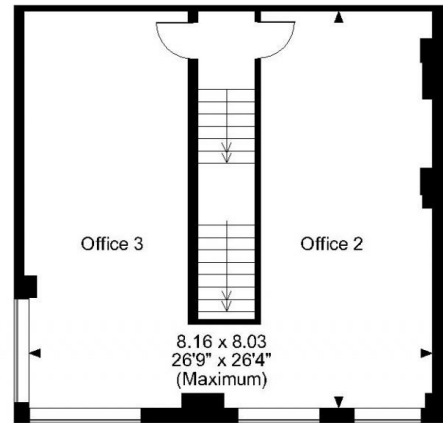
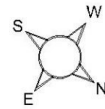
Floor Plans

Unit 4 - 2463 sq ft | **Rivermead Business Park**

 Pipers Way, Thatcham, RG19 4EP



Unit 4 Rivermead, Thatcham
Approximate Gross Internal Area
2599 Sq Ft/241 Sq M



FOR ILLUSTRATIVE PURPOSES ONLY - NOT TO SCALE

The position & size of doors, windows, appliances and other features are approximate only.
© ehouse. Unauthorised reproduction prohibited. Drawing ref. dig/8586388/JPN