
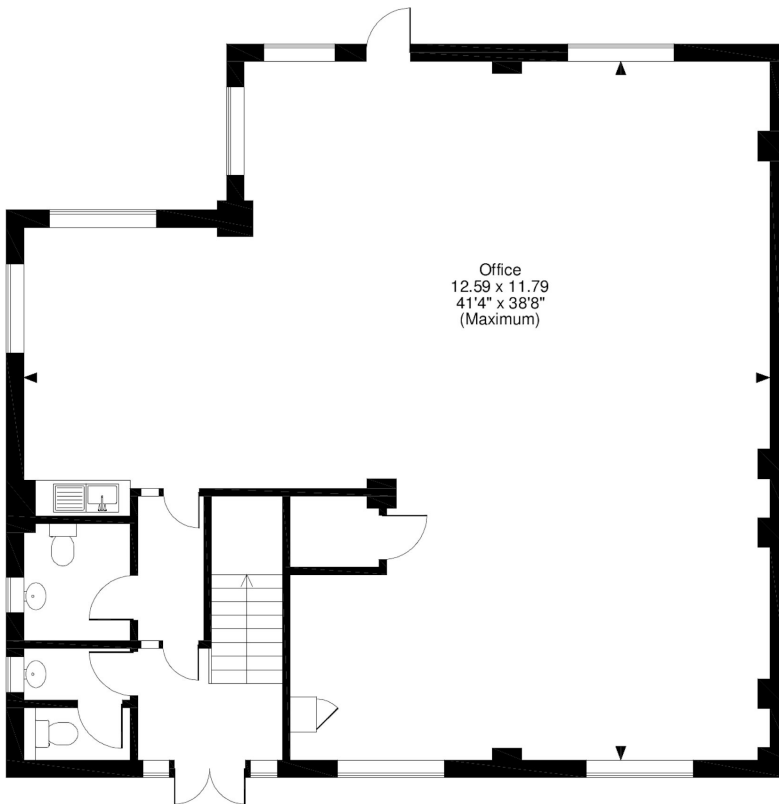
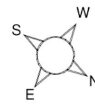


Floor Plans

Unit 7 (GF) - 1486 sq ft | **Rivermead Business Park**

 Pipers Way, Thatcham, RG19 4EP

Unit 7, Ground Floor, Rivermead, Thatcham
1486 Sq Ft/138 Sq M



FOR ILLUSTRATIVE PURPOSES ONLY - NOT TO SCALE

The position & size of doors, windows, appliances and other features are approximate only.
© ehouse. Unauthorised reproduction prohibited. Drawing ref. dig/8416535/DMS

 For more info please visit:
unit.info/UIP0100282

enquiries@industrials.co.uk

+440 808 169 7554