
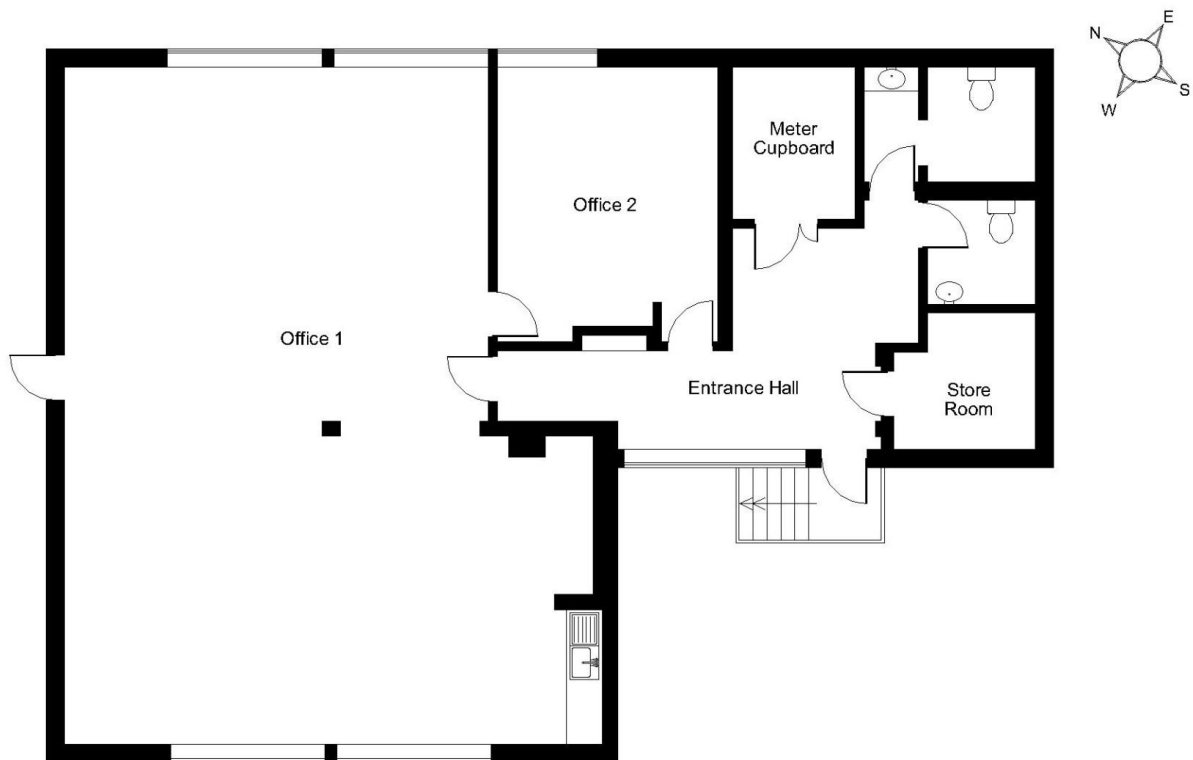


Floor Plans

Unit 1C - 1314 sq ft | **Redbrook Business Park**

 Wilthorpe Road, Barnsley, S75 1JN

Redbrook Business Park, Wilthorpe Road, Barnsley



First Floor

FOR ILLUSTRATIVE PURPOSES ONLY - NOT TO SCALE

The position & size of doors, windows, appliances and other features are approximate only.

© ehouse. Unauthorised reproduction prohibited. Drawing ref. dig/8561718/SMA