
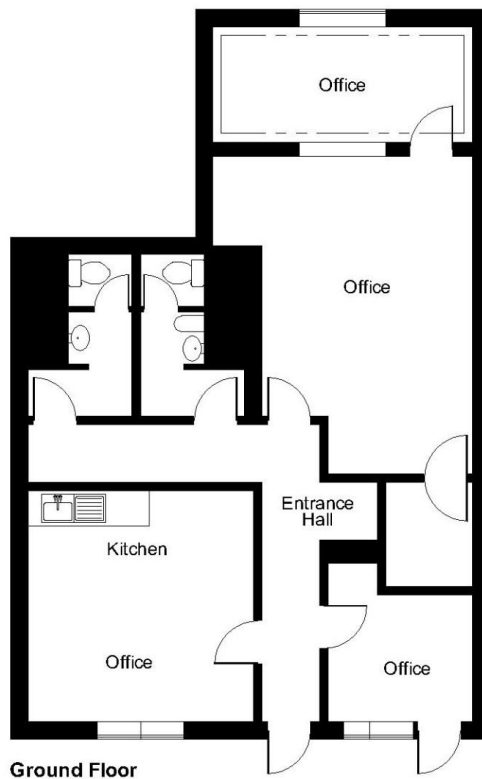
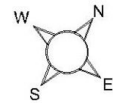


# Floor Plans

Unit 1G - 753 sq ft | **Redbrook Business Park**

 Wilthorpe Road, Barnsley, S75 1JN

**Redbrook Business Park, Wilthorpe Road, Barnsley**



**FOR ILLUSTRATIVE PURPOSES ONLY - NOT TO SCALE**

The position & size of doors, windows, appliances and other features are approximate only.  
© ehouse. Unauthorised reproduction prohibited. Drawing ref. dig/8571921/SMA