
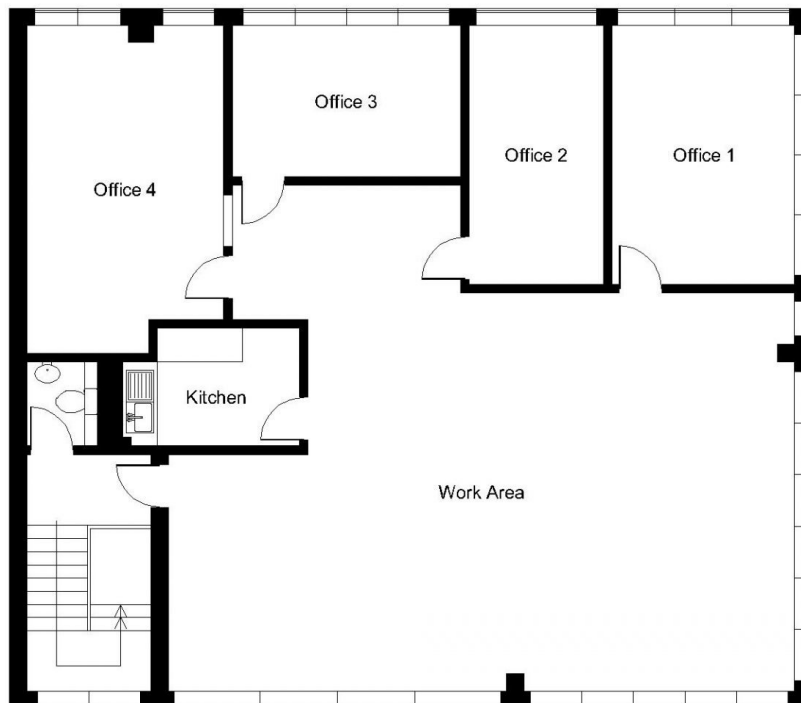
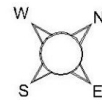


Floor Plans

Unit 8B (FF) - 1592 sq ft | **Redbrook Business Park**

 Wilthorpe Road, Barnsley, S75 1JN

Unit 8B, Redbrook Business Park Wilthorpe Road, Barnsley



Second Floor

FOR ILLUSTRATIVE PURPOSES ONLY - NOT TO SCALE

The position & size of doors, windows, appliances and other features are approximate only.

© ehouse. Unauthorised reproduction prohibited. Drawing ref. dig/8580324/MRB