
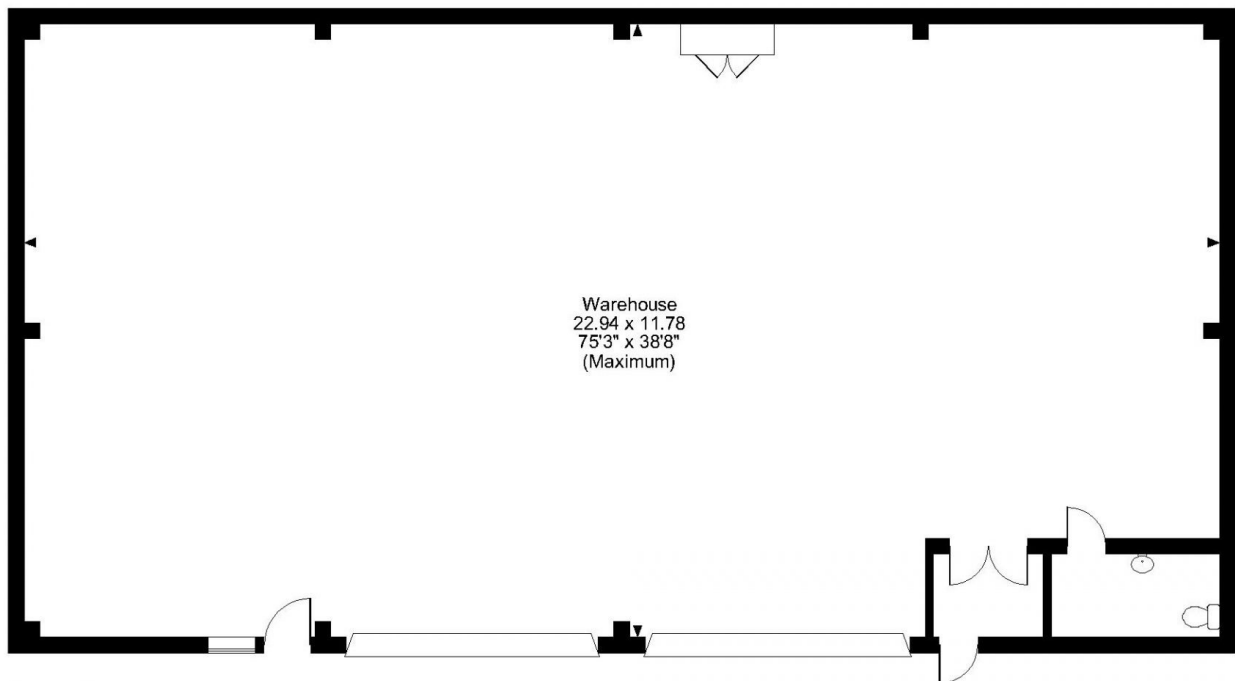
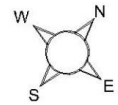


Floor Plans

Unit 14 - 2750 sq ft | **Redbrook Business Park**

 Wilthorpe Road, Barnsley, S75 1JN

Unit 14, Redbrook Business Park, Wilthorpe Road, Barnsley
Approximate Gross Internal Area
2909 Sq Ft/270 Sq M



Ground Floor

FOR ILLUSTRATIVE PURPOSES ONLY - NOT TO SCALE

The position & size of doors, windows, appliances and other features are approximate only.
© ehouse. Unauthorised reproduction prohibited. Drawing ref. dig/8589590/MRB