
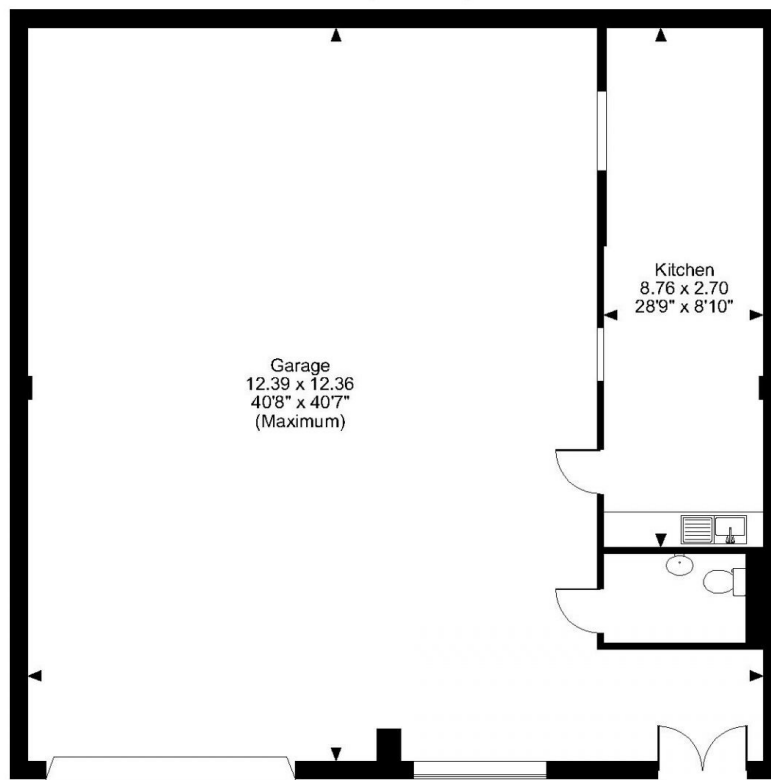


Floor Plans

B - 10 - 1615 sq ft | **Lion Business Park**

 Dering Way, Gravesend, DA12 2DN

Lion Business Park, Unit 10 Block B, Century Mint Global Investments Ltd, Dering Way, Gravesend
Approximate Gross Internal Area
1643 Sq Ft/153 Sq M



FOR ILLUSTRATIVE PURPOSES ONLY - NOT TO SCALE

The position & size of doors, windows, appliances and other features are approximate only.
© ehouse. Unauthorised reproduction prohibited. Drawing ref. dig/8583937/LCO