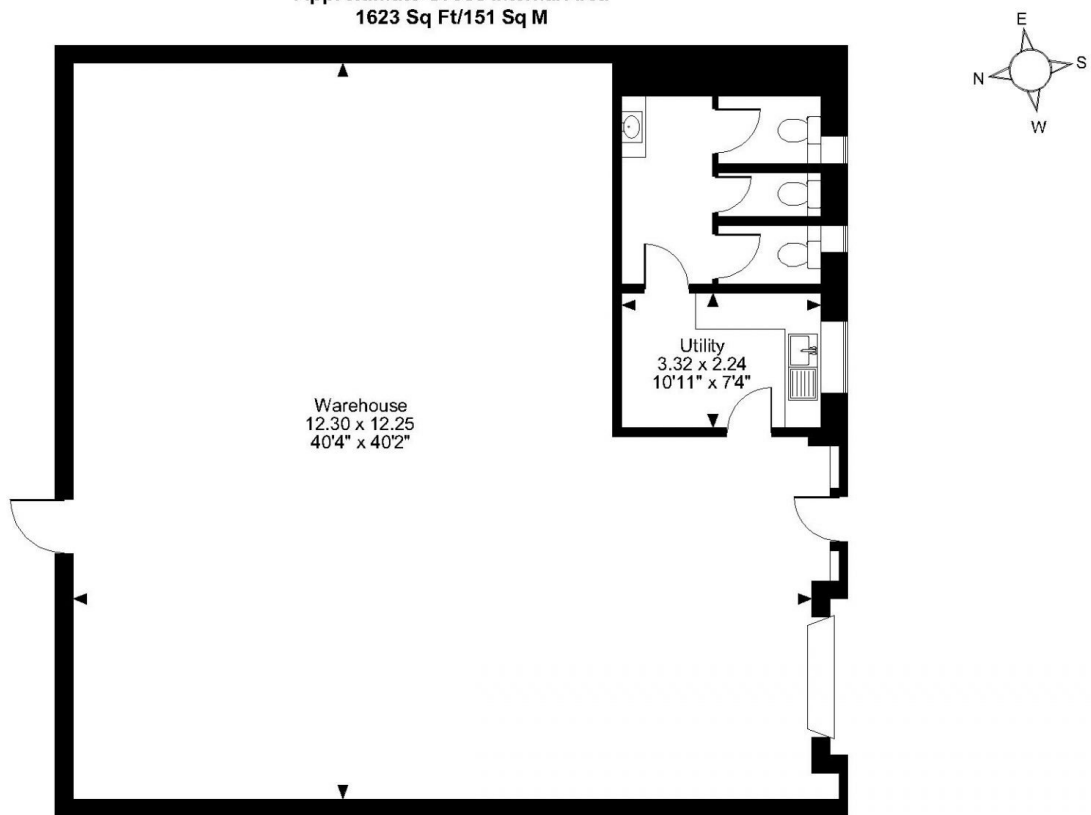


Floor Plans

Unit 7 - 1593 sq ft | **Haven Business Park**

 Slippy Gowt Lane, Wyberton, Boston, PE21 7AA

Unit 7 Haven Business Park, Slippy Gowt Lane, Wyberton, Boston
Approximate Gross Internal Area
1623 Sq Ft/151 Sq M



Ground Floor FOR ILLUSTRATIVE PURPOSES ONLY - NOT TO SCALE

The position & size of doors, windows, appliances and other features are approximate only.
© ehouse. Unauthorised reproduction prohibited. Drawing ref. dig/8580164/SWA