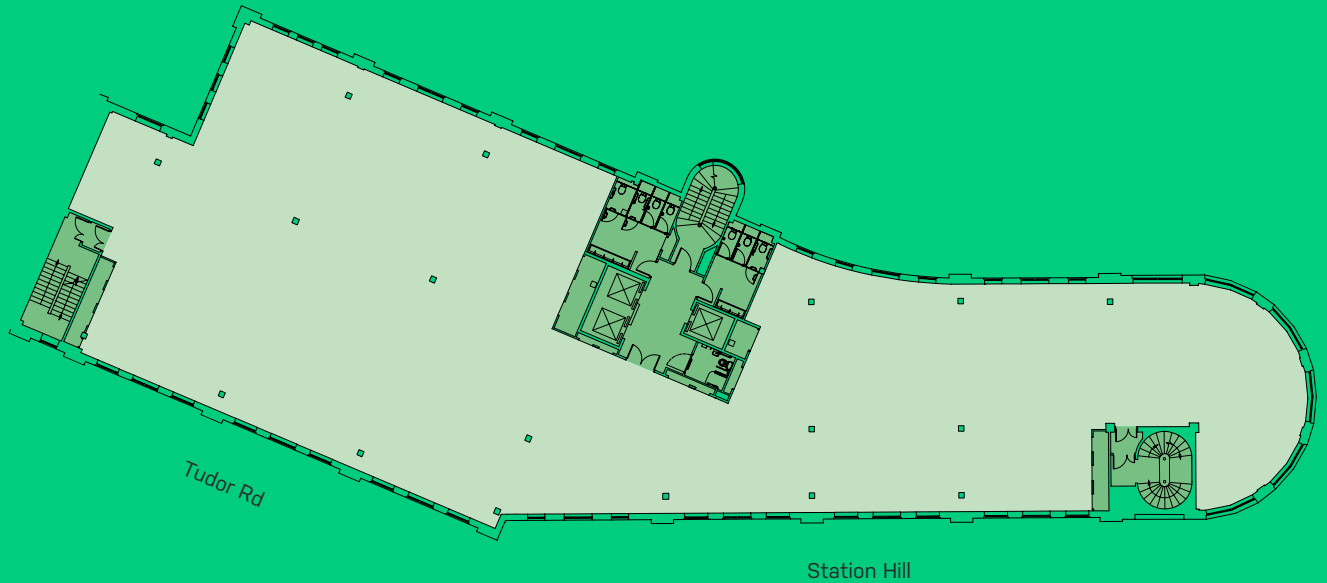


PHOENIX

READING

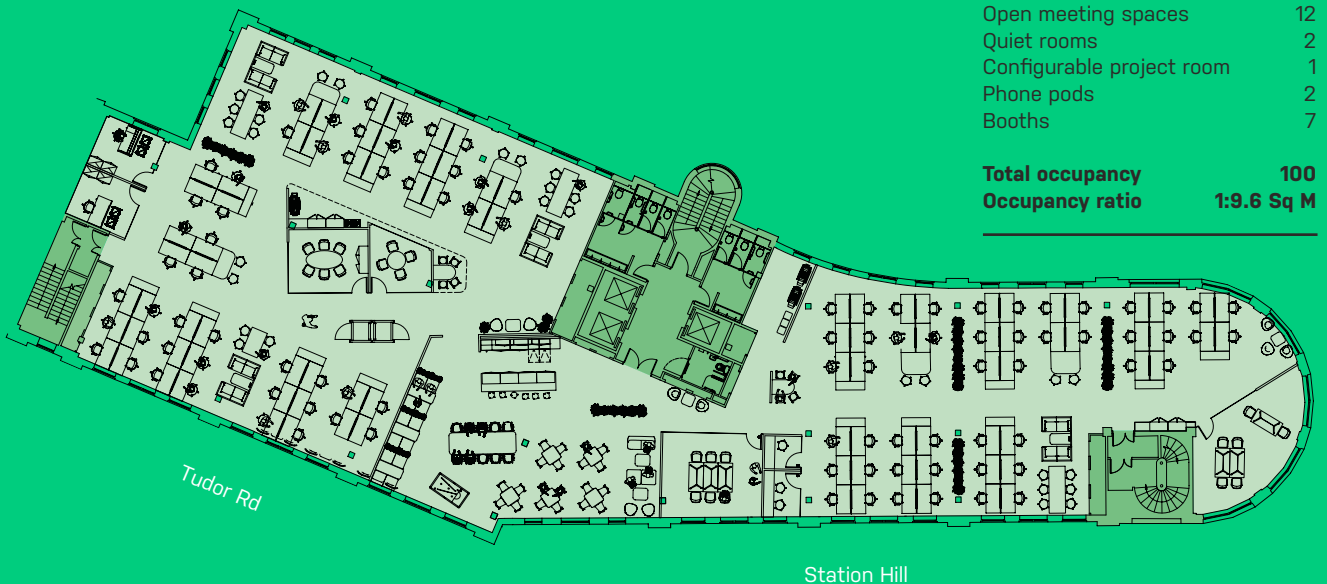
4TH FLOOR

10,363 SQ FT / 963 SQ M



4TH FLOOR INDICATIVE SPACE PLAN

10,363 SQ FT / 963 SQ M



| | |
|---------------------------|----|
| Workstations | 98 |
| Hotdesks | 6 |
| 1 person office | 2 |
| 6 person meeting room | 1 |
| 4 person meeting room | 1 |
| Open meeting spaces | 12 |
| Quiet rooms | 2 |
| Configurable project room | 1 |
| Phone pods | 2 |
| Booths | 7 |

| | |
|------------------------|-------------------|
| Total occupancy | 100 |
| Occupancy ratio | 1:9.6 Sq M |

NORTH



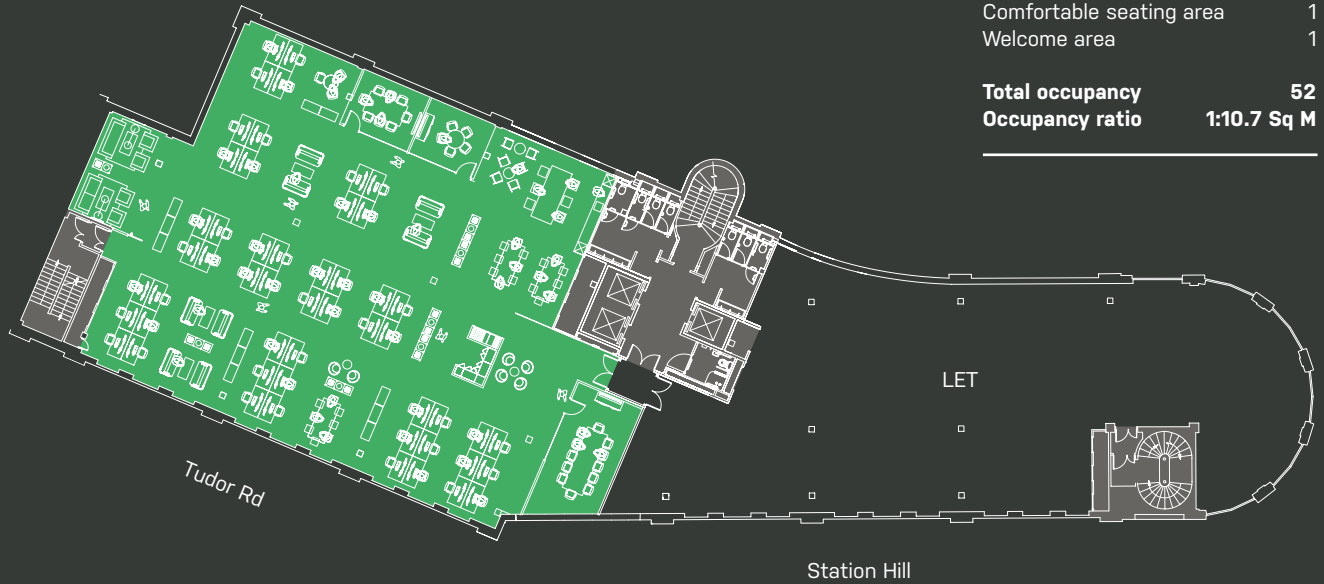
For indicative purposes only. Not to scale.
Floor measurements are IPMS3 areas.

PHOENIX

READING

PART 5TH FLOOR INDICATIVE SPACE PLAN – OPTION A

5,975 SQ FT / 555 SQ M

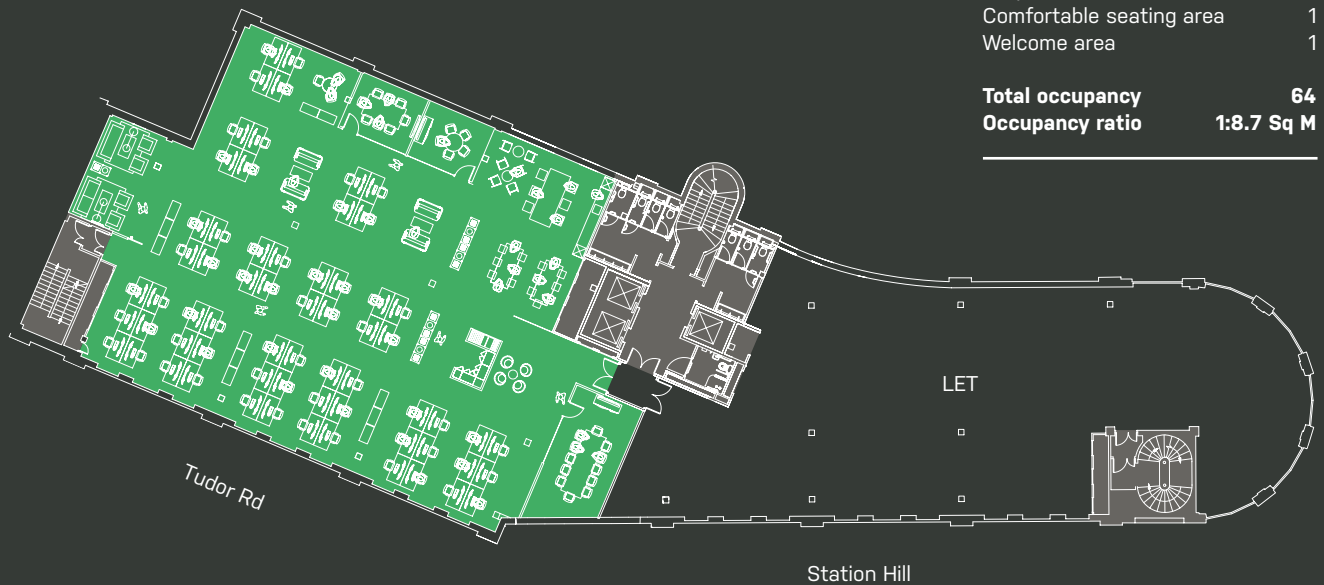


| | |
|--------------------------|----|
| Workstations | 52 |
| 5 person meeting room | 1 |
| 8 person meeting room | 1 |
| 12 person meeting room | 1 |
| Teapoint/breakout area | 1 |
| Comfortable seating area | 1 |
| Welcome area | 1 |

Total occupancy 52
Occupancy ratio 1:10.7 Sq M

PART 5TH FLOOR INDICATIVE SPACE PLAN – OPTION B

5,975 SQ FT / 555 SQ M



| | |
|--------------------------|----|
| Workstations | 64 |
| 5 person meeting room | 1 |
| 8 person meeting room | 1 |
| 12 person meeting room | 1 |
| Teapoint/breakout area | 1 |
| Comfortable seating area | 1 |
| Welcome area | 1 |

Total occupancy 64
Occupancy ratio 1:8.7 Sq M

NORTH



For indicative purposes only. Not to scale.
Floor measurements are IPMS3 areas.