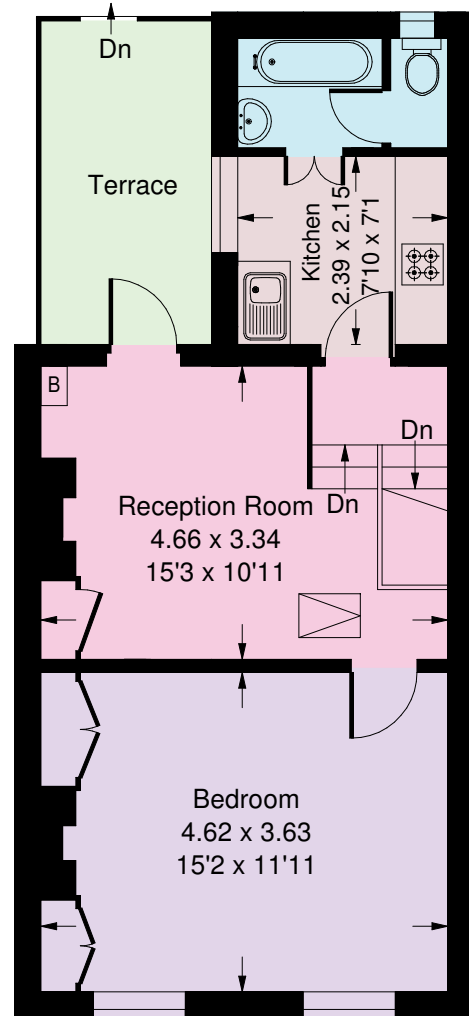
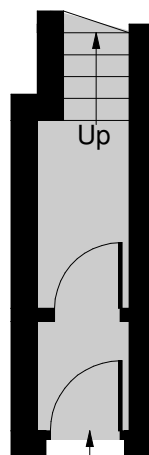
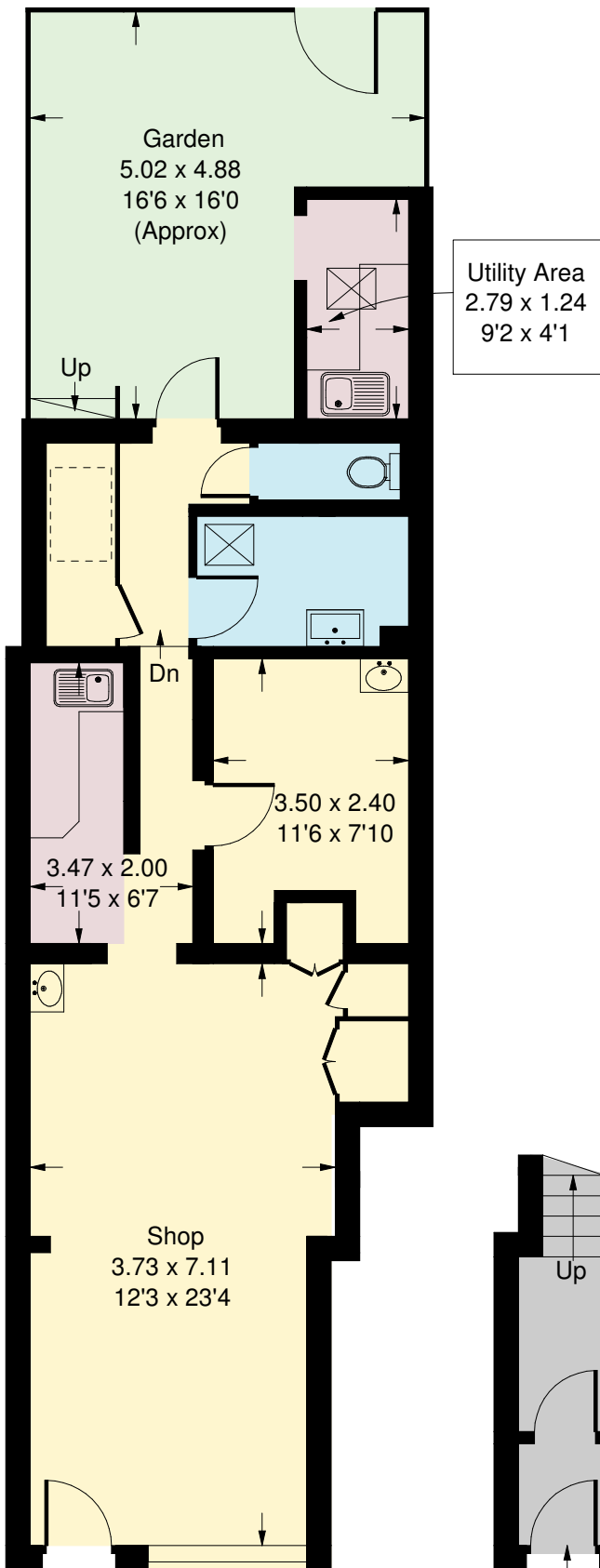
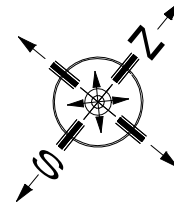


Kings Road, SW6

Approx. Gross Internal Area
 Commercial = 56.4 sq m / 607 sq ft
 Utility = 3.4 sq m / 36 sq ft
 Residential = 46.9 sq m / 505 sq ft
 Total = 106.7 sq m / 1148 sq ft



Ground Floor - Commercial

Ground Floor

First Floor

Whilst every attempt has been made to ensure the accuracy of the floor plan, measurements are approximate and not to scale. No guarantee is given on the total square footage of the property quoted on the plan. Figures given are for guidance. Plan is for illustration purposes only, not to be used for valuations.