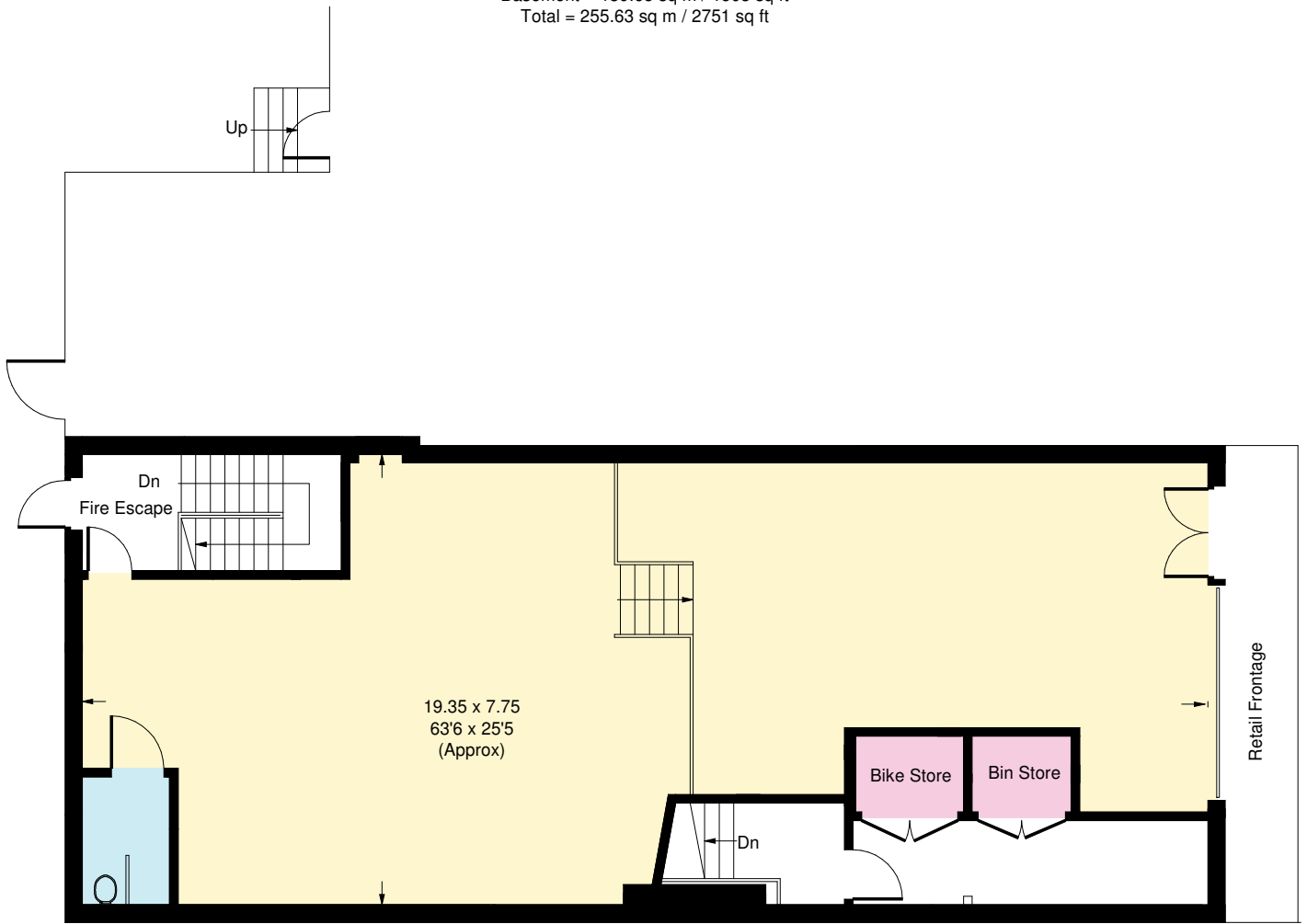
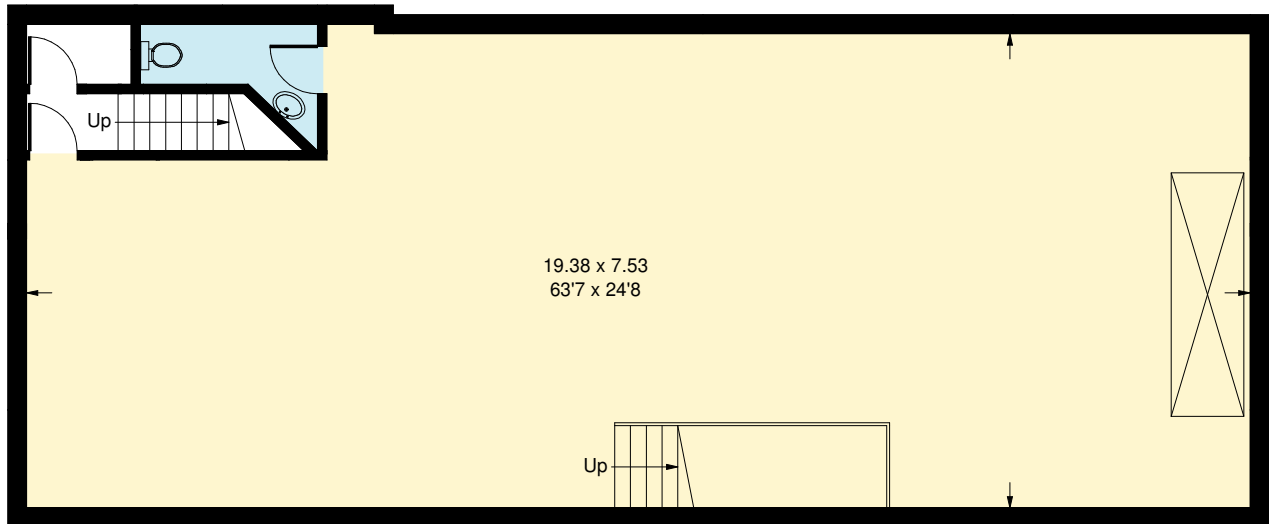


Goldhawk Road, W12

Approx. Gross Internal Area = 115.98 sq m / 1248 sq ft
Basement = 139.65 sq m / 1503 sq ft
Total = 255.63 sq m / 2751 sq ft



Ground Floor



Basement

Whilst every attempt has been made to ensure the accuracy of the floor plan, measurements are approximate and not to scale.
No guarantee is given on the total square footage of the property quoted on the plan. Figures given are for guidance.
Plan is for illustration purposes only, not to be used for valuations.