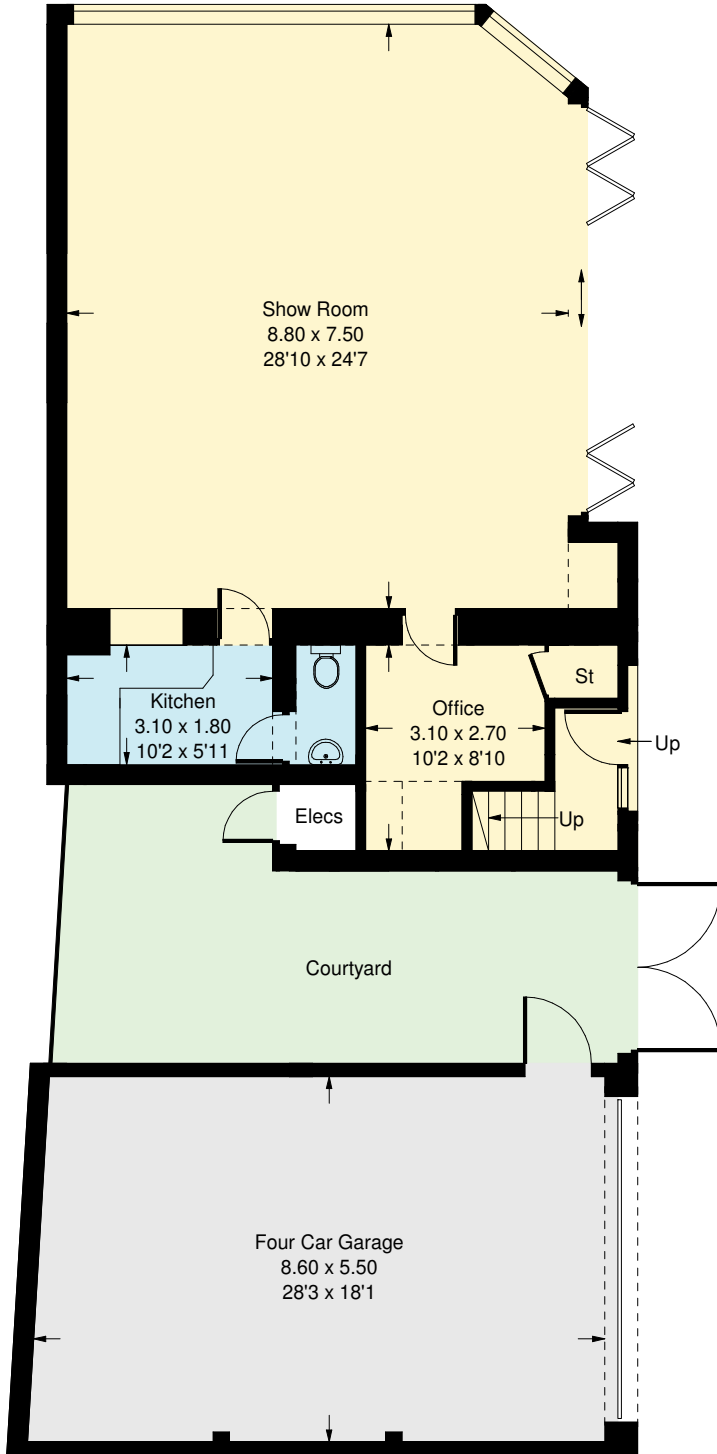
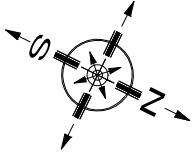
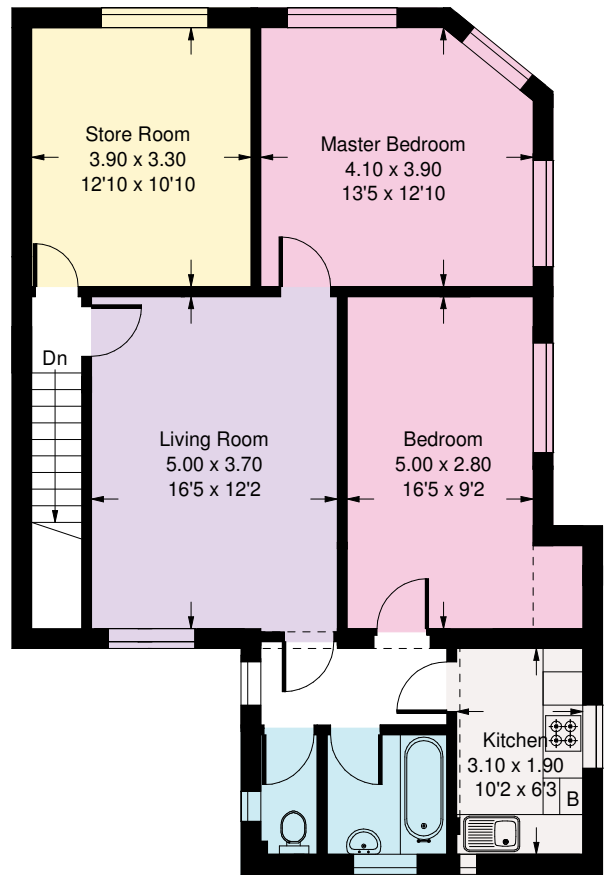


# London Road, SW16

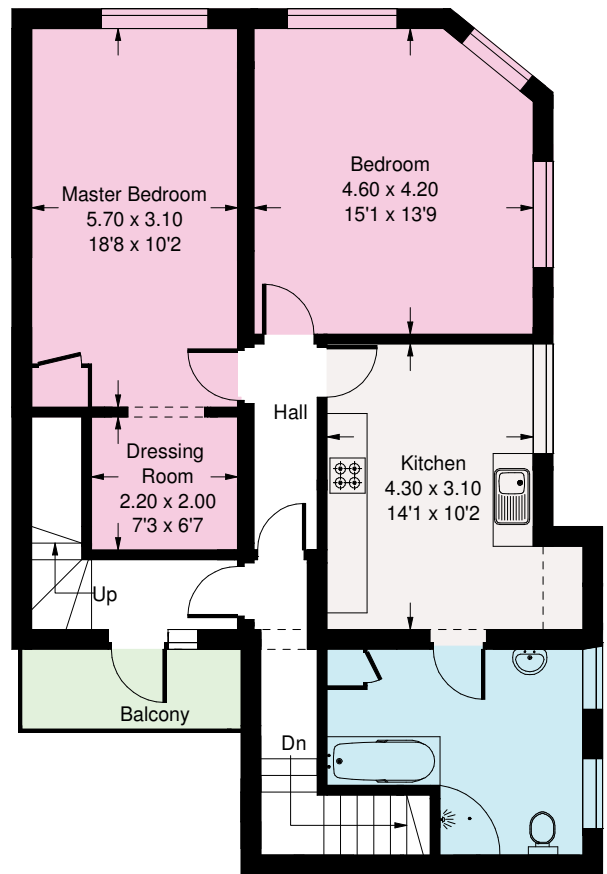
Approx. Gross Internal Area  
 Residential: 1743 sq ft / 162 sq m  
 Commercial: 1755 sq ft / 163 sq m  
 Total = 3498 sq ft / 325 sq m



**Ground Floor**



**Second Floor**



**First Floor**

Whilst every attempt has been made to ensure the accuracy of the floor plan, measurements are approximate and not to scale. No guarantee is given on the total square footage of the property quoted on the plan. Figures given are for guidance. Plan is for illustration purposes only, not to be used for valuations.