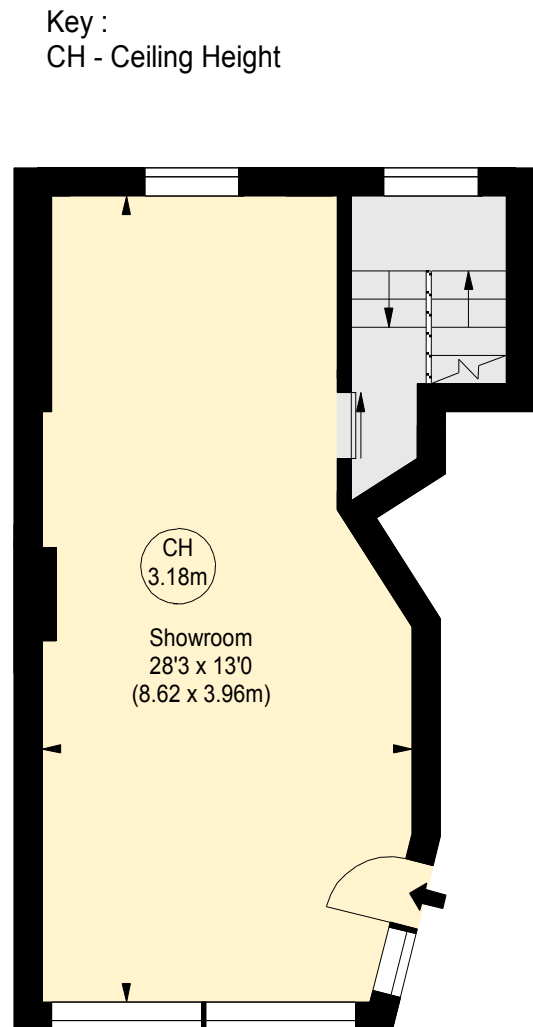
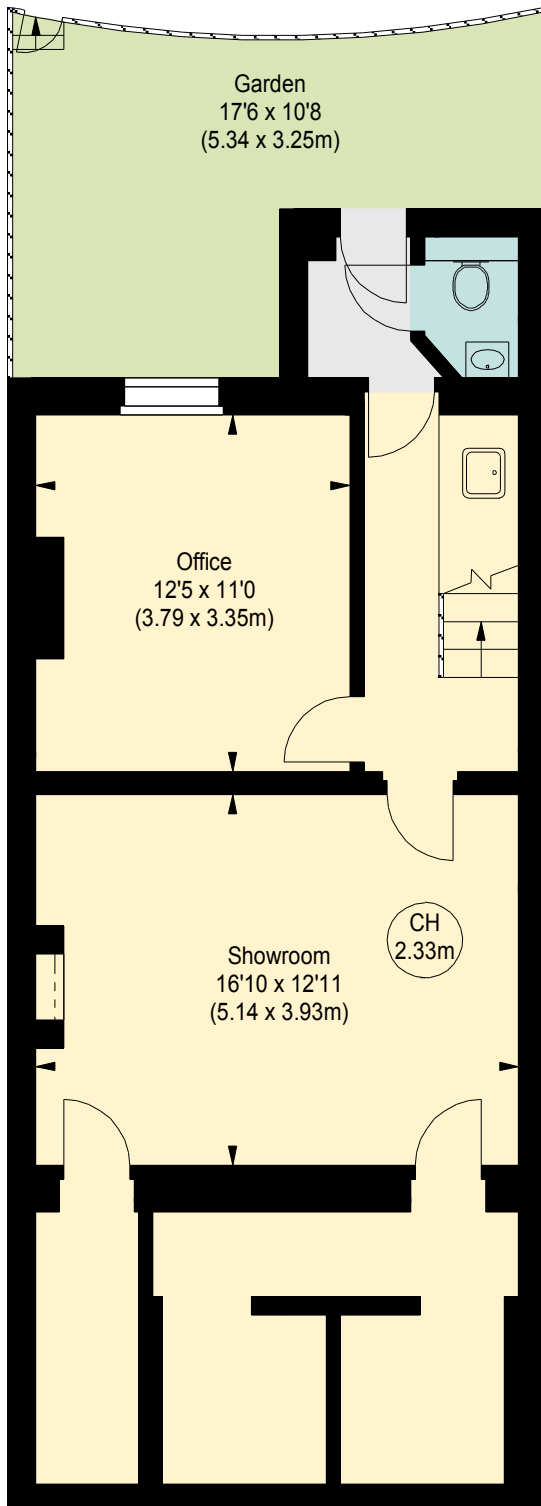
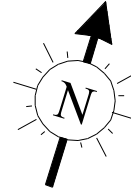


KINGS ROAD, SW6

Approximate gross internal area
1050 sq ft / 97.54 sq m



Key :
CH - Ceiling Height

BASEMENT
(674 sq ft.)

GROUND FLOOR
(376 sq ft.)

Although every attempt has been made to ensure accuracy, all measurements are approximate.
This floorplan is for illustrative purposes only and not to scale.
Measured in accordance with RICS Standards.