



## Unit 8 Mill Farm Business Park

Millfield Road, Hounslow, TW4 5PY

### Production/Industrial Use Warehouse To Let

**894 sq ft**  
(83.06 sq m)

- Allocated Parking
- Gated Estate
- Three Phase Power
- Up and over loading door
- Hours of use: Monday – Friday  
8am-8pm Saturday – 8am-1pm  
Sunday – No access

# Unit 8 Mill Farm Business Park, Millfield Road, Hounslow, TW4 5PY

## Summary

<b>Available Size</b>	894 sq ft
<b>Rent</b>	£22.50 per sq ft
<b>Rates Payable</b>	£11,851.25 per annum
<b>Rateable Value</b>	£23,750
<b>Service Charge</b>	£1.55 per sq ft
<b>Car Parking</b>	£3 per space / annum
<b>VAT</b>	Applicable
<b>Legal Fees</b>	Each party to bear their own costs
<b>Estate Charge</b>	N/A
<b>EPC Rating</b>	D

## Description

Unit 8 Mill Farm Business Park is a mid of terrace modern brick built industrial/warehouse unit of 894 sq ft.

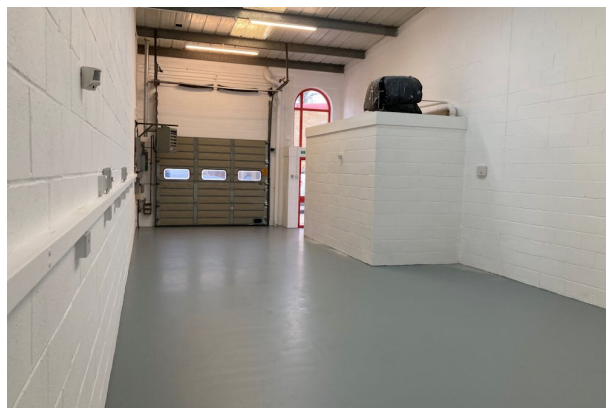
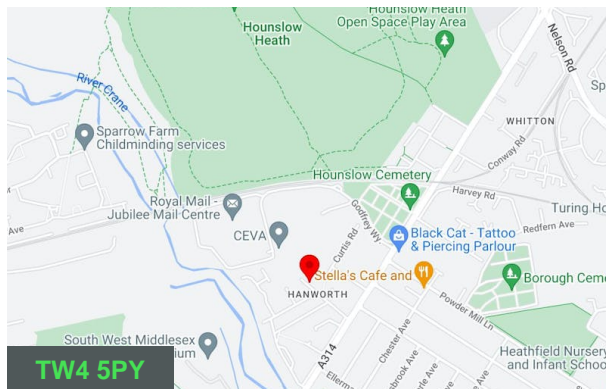
## Location

The premises are located within Mill Farm Business Park just off Hanworth Road, (A314) about 1.5 miles south-west of Hounslow Town centre and 1mile from A316 Country Way access to M3 Motorway.

## Accommodation

The accommodation comprises the following areas:

Name	sq ft	sq m	Availability
Unit - 8	894	83.06	Available
<b>Total</b>	<b>894</b>	<b>83.06</b>	



## Viewing & Further Information



### Callum Moloney

020 3855 5790 | 07815 692996  
callum.moloney@logixproperty.com



### John Pocock

07766 072273  
john.pocock@logixproperty.com



