

Westwood and Company

COMMERCIAL PROPERTY AGENTS, LAND AND DEVELOPMENT CONSULTANTS, VALUERS,
INVESTMENT PROPERTY, LEISURE AND LICENSED PROPERTY AGENTS
1 MINT STREET, GODALMING, SURREY GU7 1HE
TEL: 01483 429393 www.westwoodandco.com

BRAND NEW E CLASS UNITS (OFFICE, MEDICAL, GYMNASIUMS ETC) To Let

Unit 2, Heyworth Business Park
Old Portsmouth Road, Peasmarsh, Guildford
Surrey, GU3 1AF.



**Unit 2 with a Total Internal Area:
1,877sq ft (174 sqm)**

SPECIFICATIONS FROM OFFICES, MEDICAL, GYMNASIUMS TO STANDARD BUSINESS UNITS.

TENANT SPECIAL REQUIREMENTS CATERED FOR FROM SHELL UNITS TO FULL FITOUT

FULL REPAIRING AND INSURING LEASES AVAILABLE FOR VARIED TERMS.

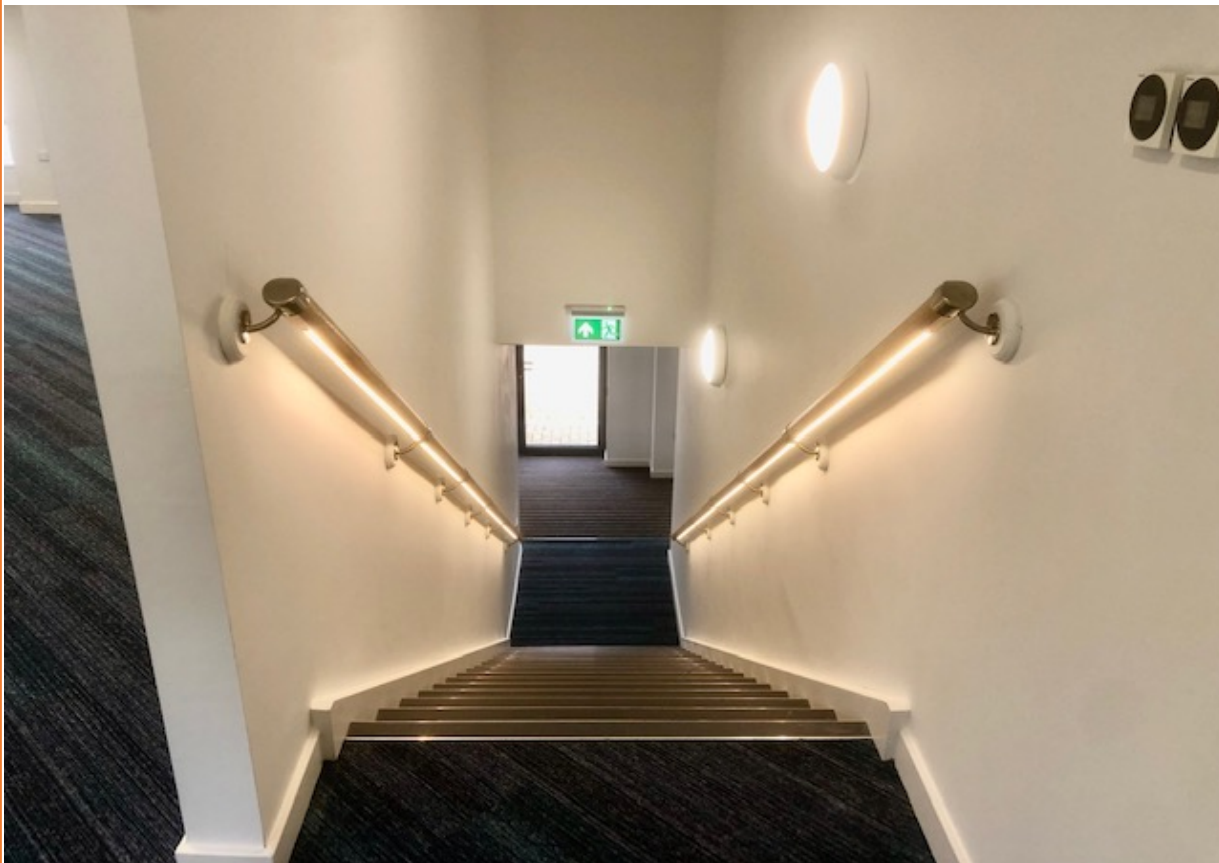
EARLY COMPLETIONS SUBJECT TO SPECIFICATIONS

2 MILES FROM GODALMING TOWN CENTRE 2 MILES FROM GUILDFORD TOWN CENTRE AND EASY ACCESS TO GATWICK AND HEATHROW AIRPORTS VIA THE A3 TRUNK ROAD AT COMPTON 1 MILE.

2)

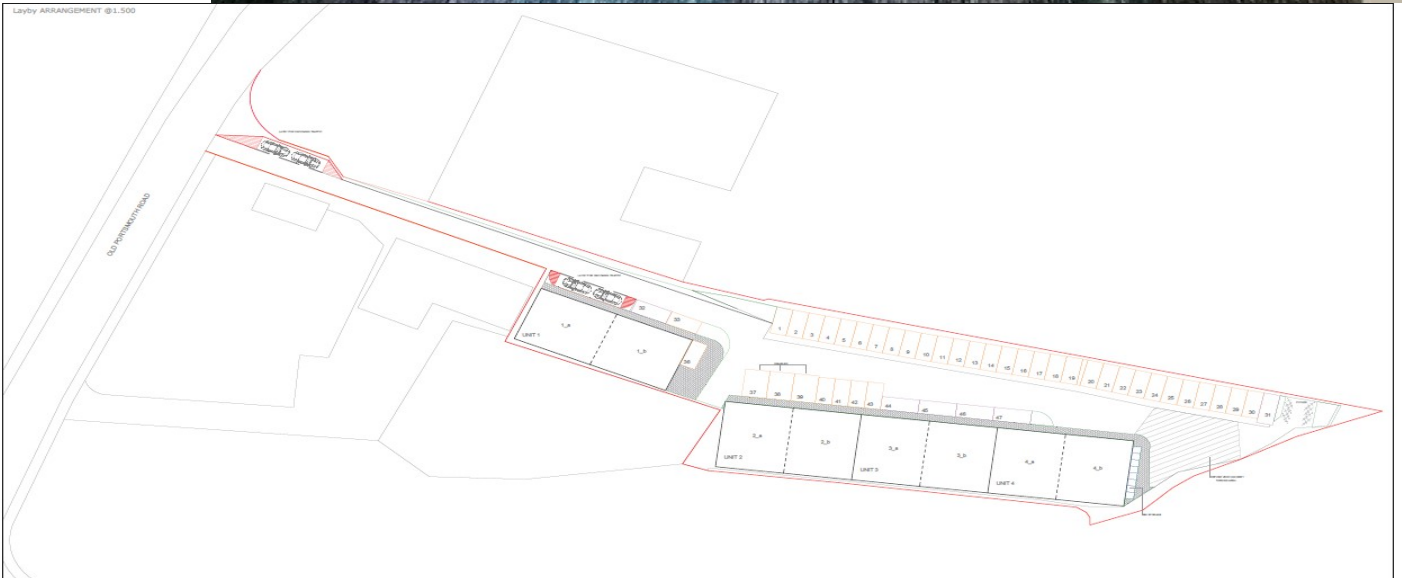
WITH 5 CAR PARKING SPACES AVAILABLE, ALL AREAS QUOTED ARE GROSS INTERNAL AREAS.

BELOW IS AN INTERNAL PHOTO OF UNIT 2 WHICH HAS BEEN FITTED OUT TO A HIGH SPECIFICATION WITH AIRCON, KITCHEN, APPLIANCES ETC.



PTO....

3)



Scale Bar @ 1:500



Client	
Project Title YARD & PREMISES, PEASHMARSH GUILDFORD, SURREY, GU3 1LZ	
Drawing Title LAYBY ARRANGEMENT	
SCALE 1:500 @ A3	Date: 13/03/2017
File Ref.:24_11_2016@peashmarsh.dwg	
Drawing No. L4789	

**VIEWING STRICTLY BY APPOINTMENT THROUGH SOLE AGENTS
WESTWOOD AND COMPANY ON 01483 429393**

Website www.westwoodandco.com

Whilst every care has been taken in the presentation of these particulars intending purchasers should satisfy themselves as to their accuracy. They do not constitute any form of offer or contract. All negotiations should be conducted through WESTWOOD AND COMPANY