

MATTER
BERMONDSEY
SE1

VISIT WEBSITE >

INTRO
BUILDING
AREA
CONTACT



Digital illustration is indicative only

THE PLACE WHERE IDEAS EMERGE

New contemporary office space
(or alternative Class E use) at
18 Crimscott Street, Bermondsey,
providing units from 6,495 - 21,259 sq ft.

VISIT WEBSITE >

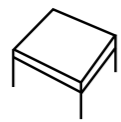
INTRO
BUILDING
AREA
CONTACT

A SPACE THAT ENABLES

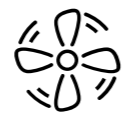
A modern, beautifully
considered workspace
to enable you to thrive



New lease terms



Raised access
flooring
throughout



Air Conditioning



LED Lighting



Secure bicycle
storage 100 racks



Five Showers



3.67m
floor to ceiling
height on
Lower Ground Floor



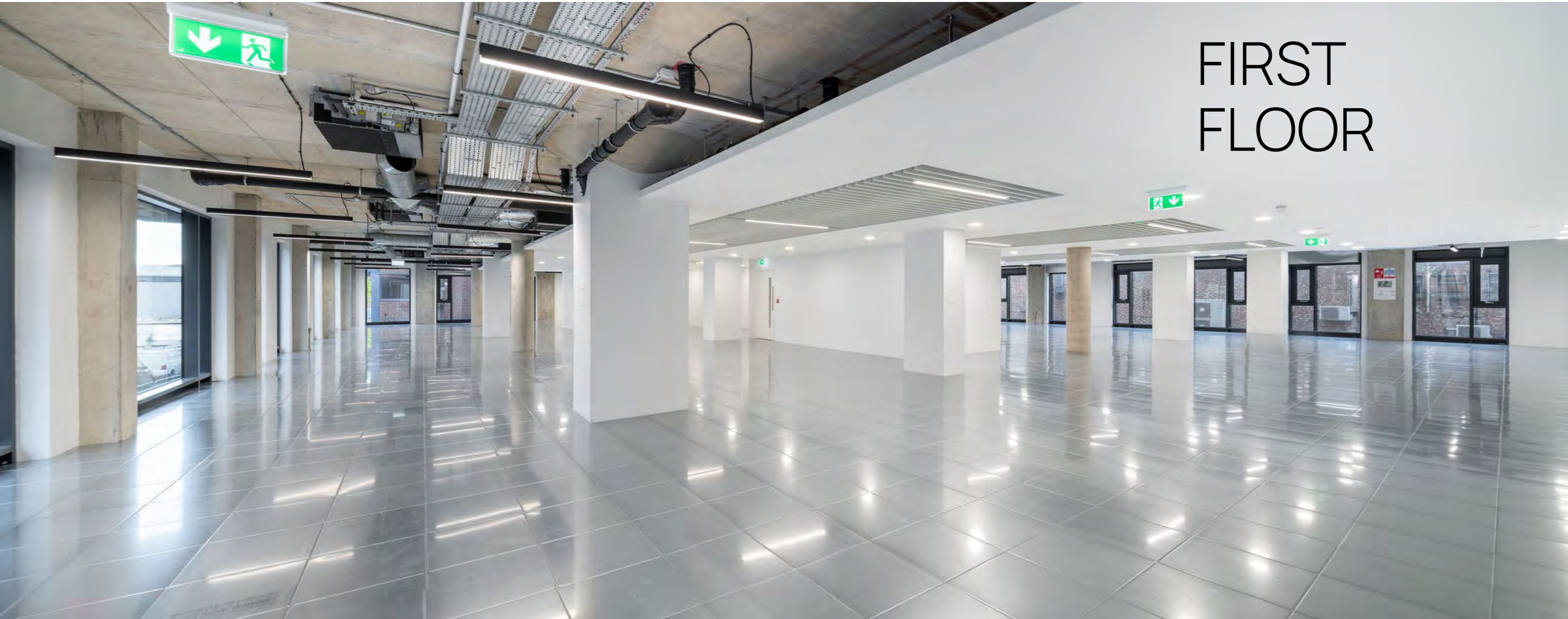
BREEAM
Excellent

INTRO
BUILDING
AREA
CONTACT

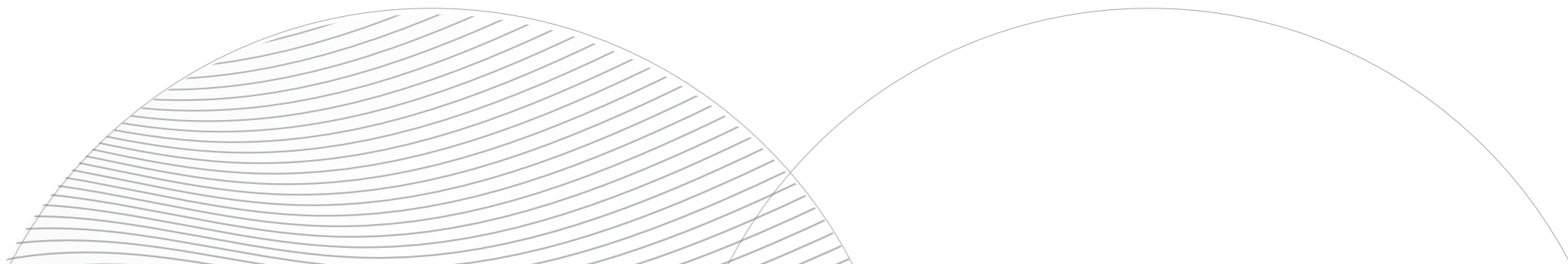


GROUND
FLOOR

INTRO
BUILDING
AREA
CONTACT



FIRST
FLOOR



INTRO
BUILDING
AREA
CONTACT



3.67m

LOWER
GROUND
FLOOR

INTRO
BUILDING
AREA
CONTACT

Lower Ground Floor



Digital illustration of Lower Ground Floor is indicative only

INTRO
BUILDING
AREA
CONTACT

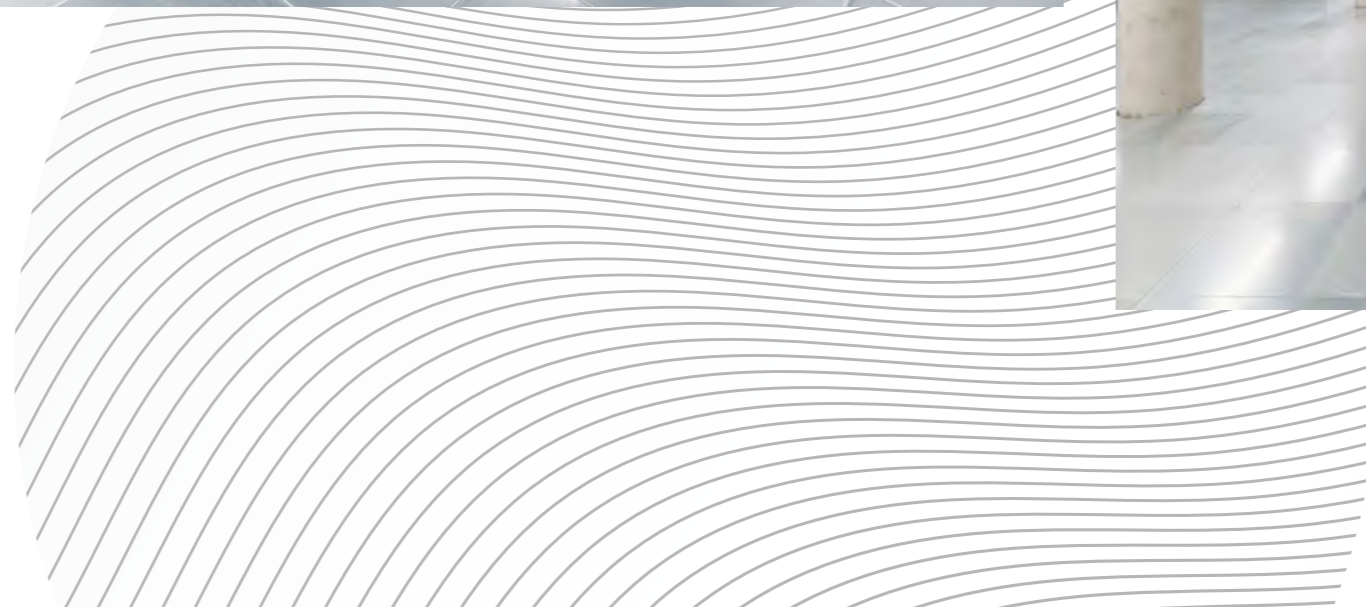
First Floor



First Floor



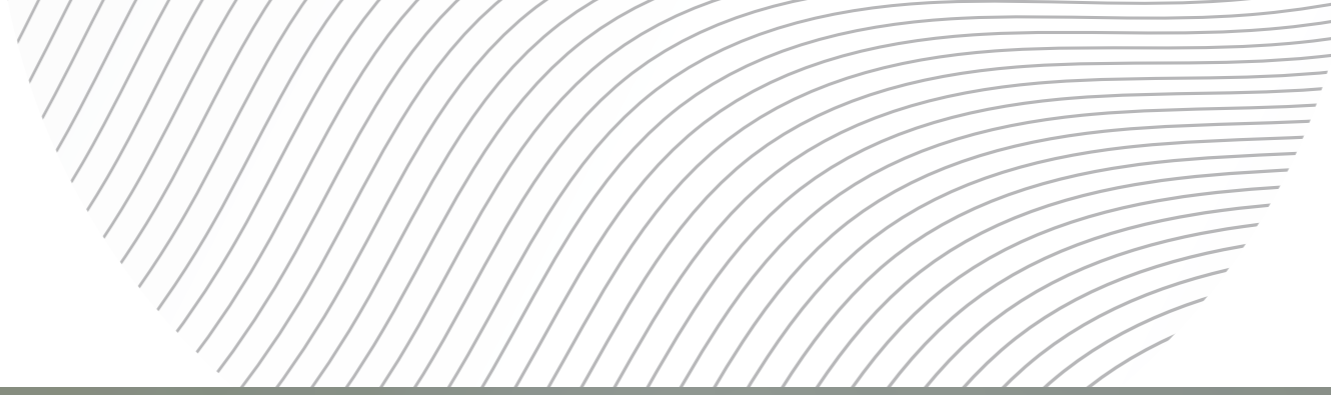
Lower Ground Floor



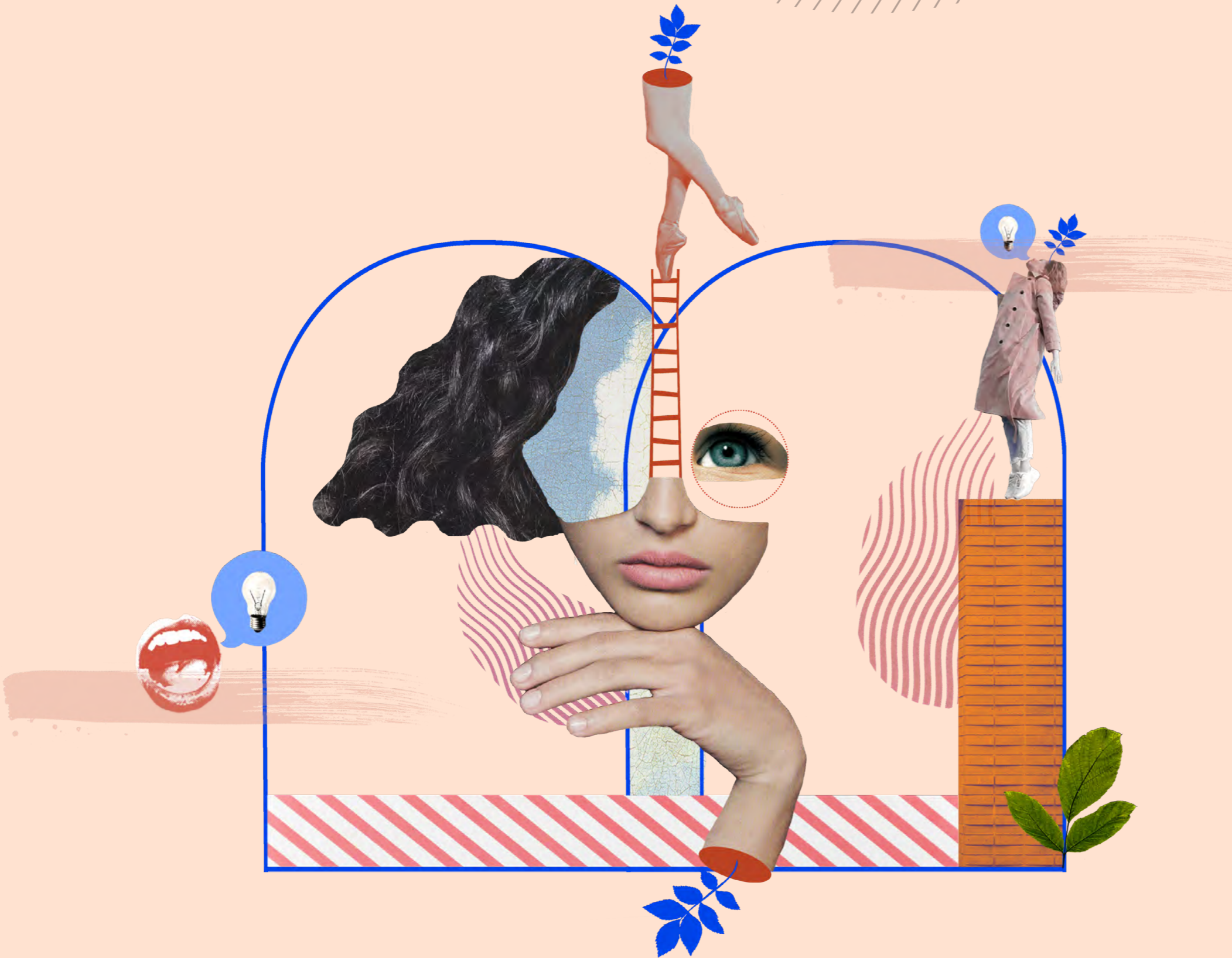


FIRST
FLOOR

INTRO
BUILDING
AREA
CONTACT

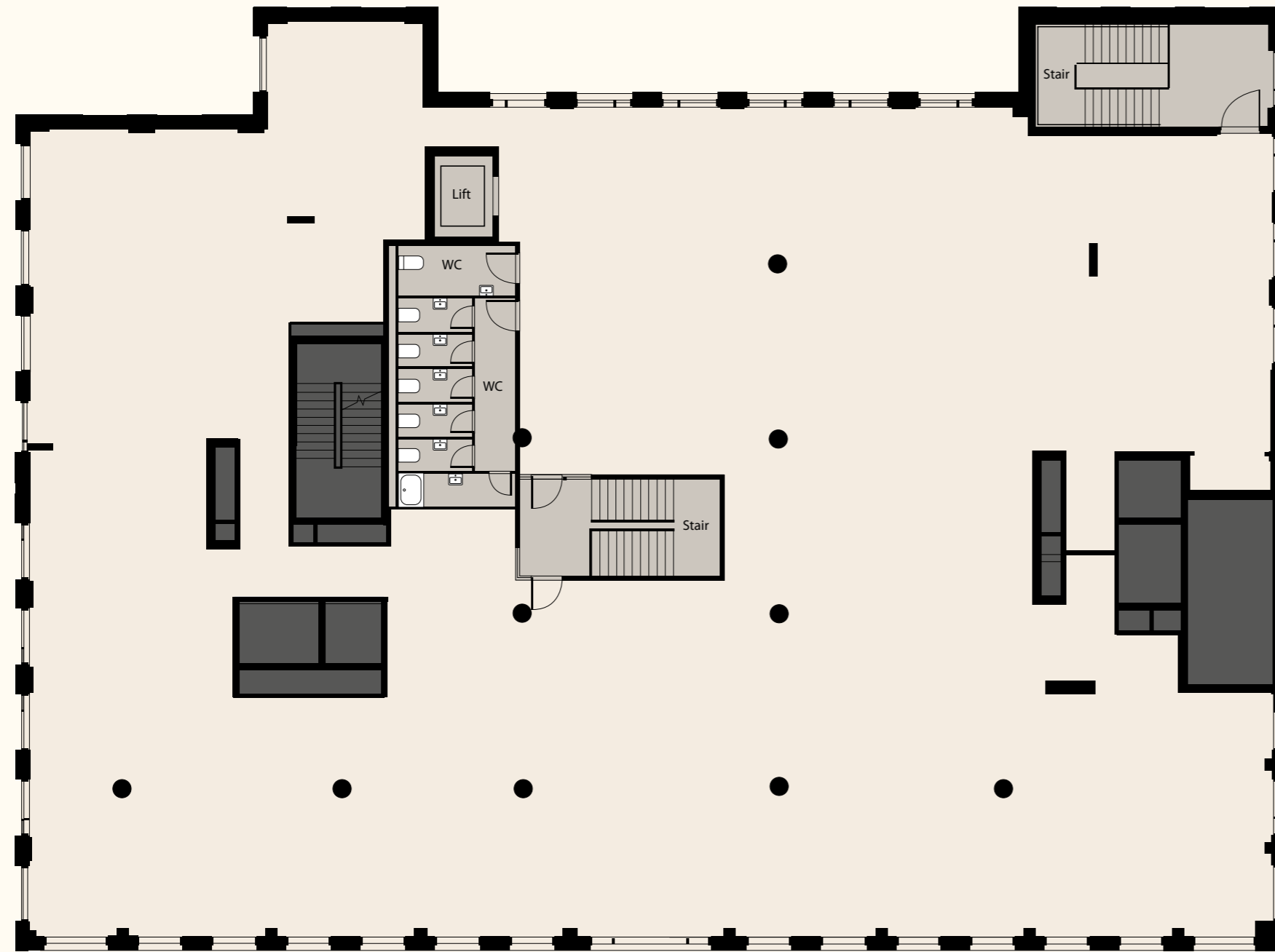






SCHEDULE OF AREAS

Floor	Sqft	Sqm
First	8,711	809
Ground	6,053	562
Lower Ground	6,495	603
Total NIA	21,259	1,974

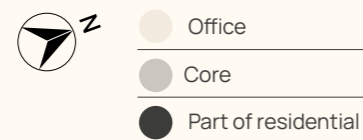


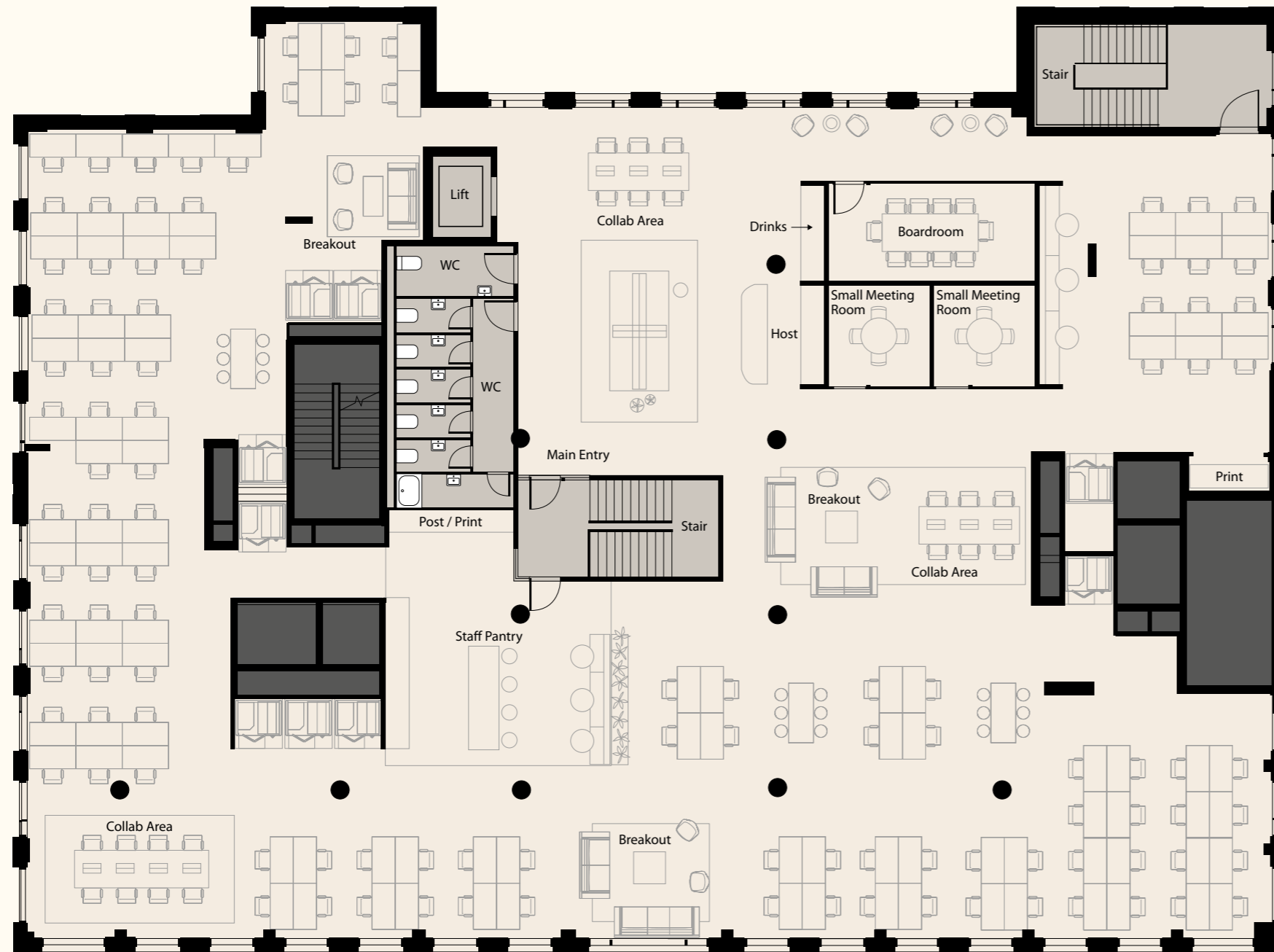
Crimscott Street

FIRST FLOOR

CAT A

Floor	Sqft	Sqm
First	8,711	809





FIRST FLOOR

Indicative layout

Floor	Sqft	Sqm
First	8,711	809
Desk Count as Pictured		108
Max Desk Count		178
Meeting rooms		3
Breakout areas		3

Crimscott Street

Furniture layout is for illustrative purposes only.

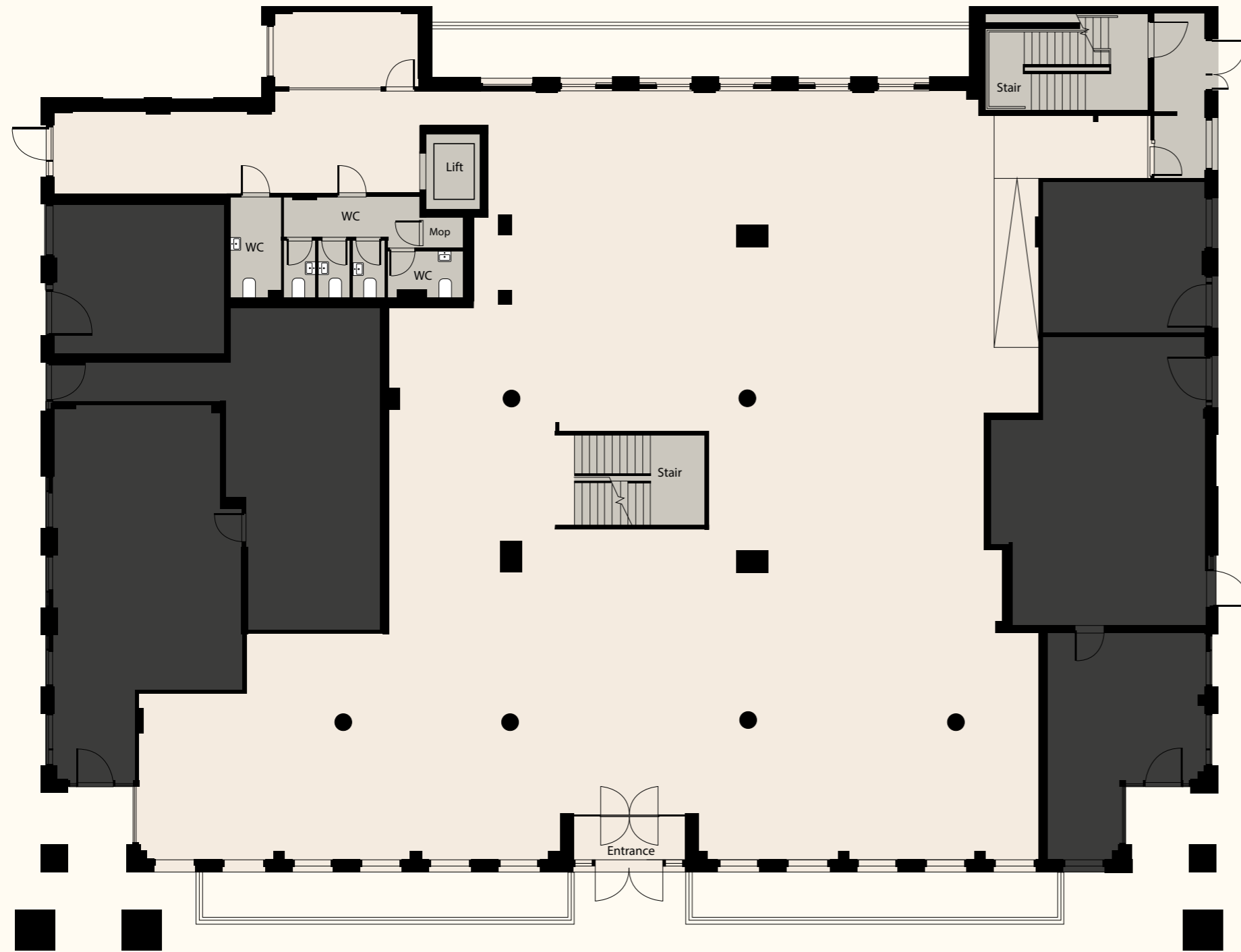


- Office
- Core
- Part of residential

INTRO
BUILDING
AREA
CONTACT



GROUND
FLOOR

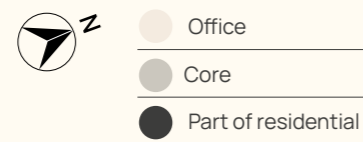


Crimscott Street

GROUND FLOOR

CAT A

Floor	Sqft	Sqm
Ground	6,053	562





Crimscott Street

GROUND FLOOR

Multi-tenant layout

Floor	Sqft	Sqm
Ground	8,711	809
Office 1 - 62 desks	3,239	301
Office 2 - 21 desks	1,388	129
Communal Reception	1,371	127

Furniture layout is for illustrative purposes only.

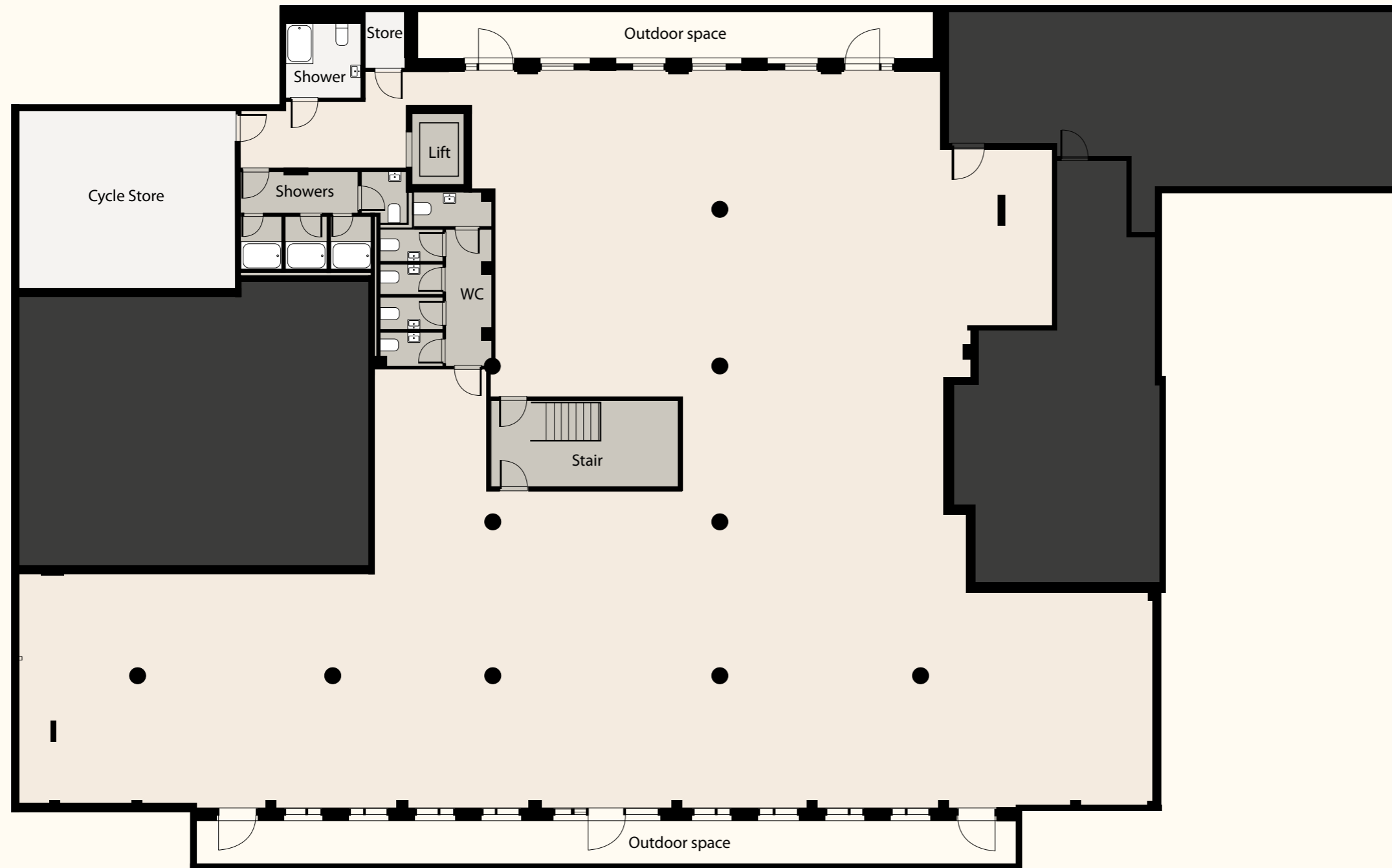


- Office
- Communal Areas
- Core
- Part of residential

INTRO
BUILDING
AREA
CONTACT



LOWER
GROUND
FLOOR

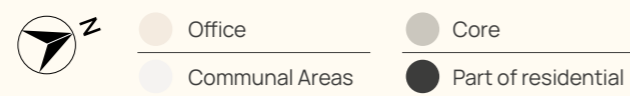


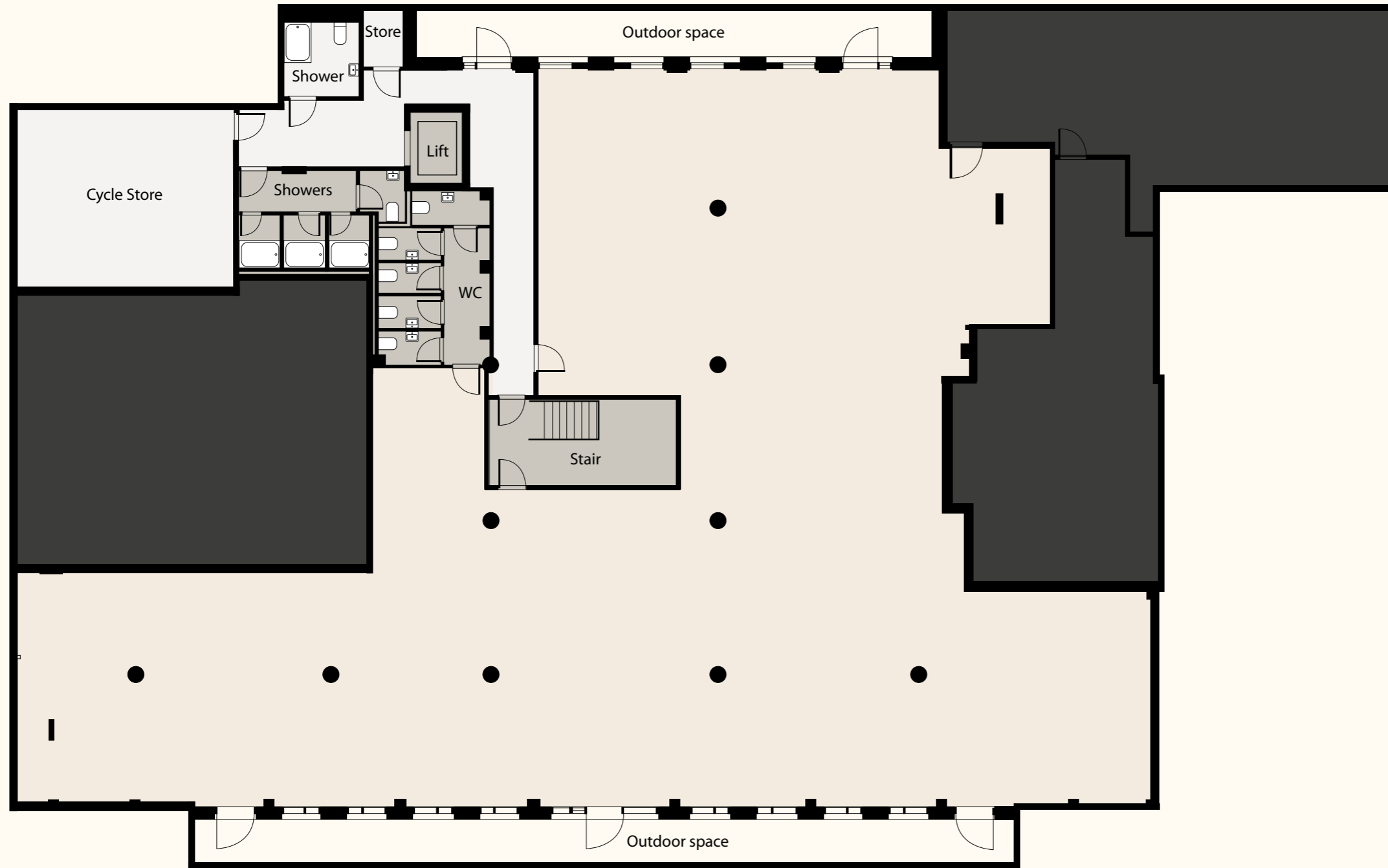
LOWER GROUND FLOOR

Single occupier layout

Floor	Sqft	Sqm
Lower Ground Floor	6,495	603

Crimscott Street

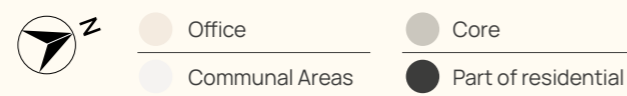




LOWER GROUND FLOOR

Multi-tenant layout

Floor	Sqft	Sqm
Lower Ground Floor	6,189	575





Ground Floor



THE DETAIL

FINISHED CEILING HEIGHTS

First Floor

2.325m with bulkhead
2.925m to exposed soffit

Ground Floor

2.6m with bulkhead
3.2m to exposed soffit

LGF

3.07m with bulkhead
3.67m to exposed soffit

RAISED FLOORS

Loadings 8kN/m² (UDL)

Occupational Densities

Building services 1:6

WCs 1:10

Lift & Access 1:6

Escape 1:6

VERTICAL TRANSPORTATION/LIFT

One 13 person passenger lift

HEATING AND COOLING

150w/m²

VENTILATION

10l/s/pp

SMALL POWER

25w/m²

LIGHTING

8w/m²

CYCLE FACILITIES

100 spaces

SHOWERS

5 showers

CONNECTIVITY

Fibre enabled

INTRO
BUILDING
AREA
CONTACT

DISCOVER BERMONDSEY SE1

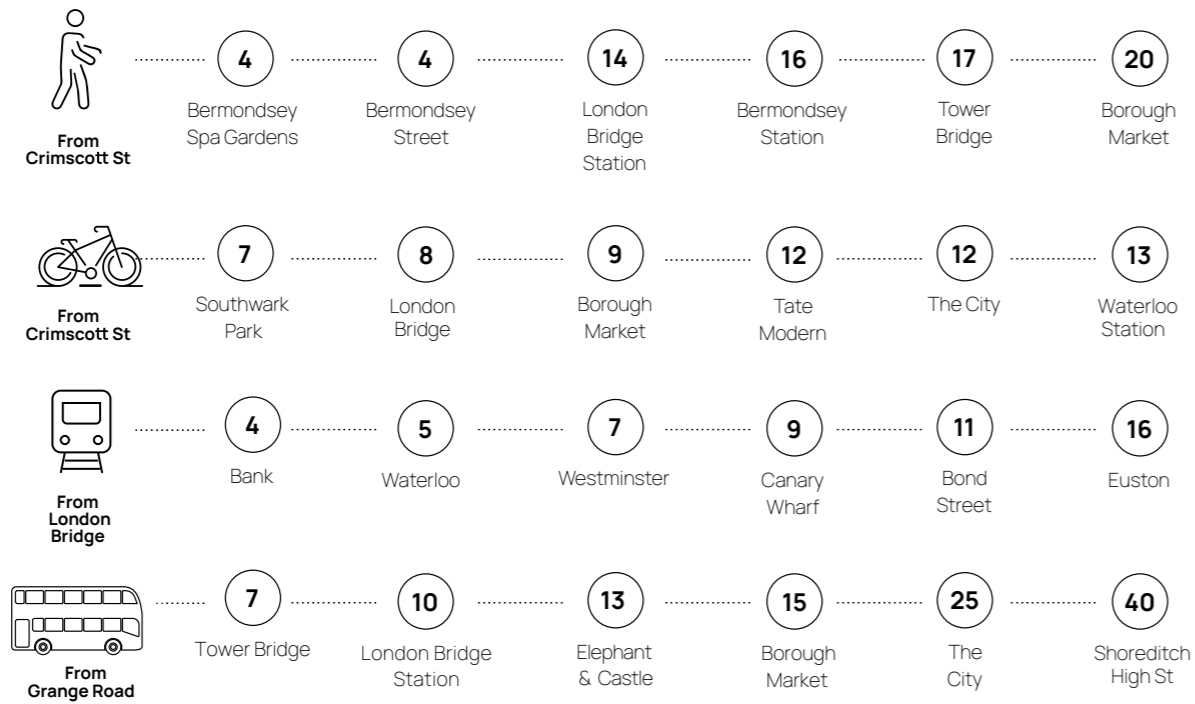
A thriving, creative part of London with outstanding connections

Rich in history and genuine London character, Bermondsey has an authentic urban village vibe. The area's distinctive railway arches have evolved into some of the best cafés, bars and restaurants south of the river, making this a destination for foodies. Its galleries, museums and abundance of green space make this one of London's most well-rounded locations. All just a short walk or cycle to the River Thames and London Bridge.



INTRO
BUILDING
AREA
CONTACT

Matter Bermondsey is perfectly placed to walk,
cycle or use public transport to work.



All times in minutes, taken from CityMapper



Grab a coffee

Bermondsey is one of the best places in London to enjoy your perfect blend. With a number of independent artisans on Bermondsey Street alone, there are plenty of places to lighten up the weekday grind.

LOCAL FAVOURITES

Fuckcoffe, 167 Bermondsey St

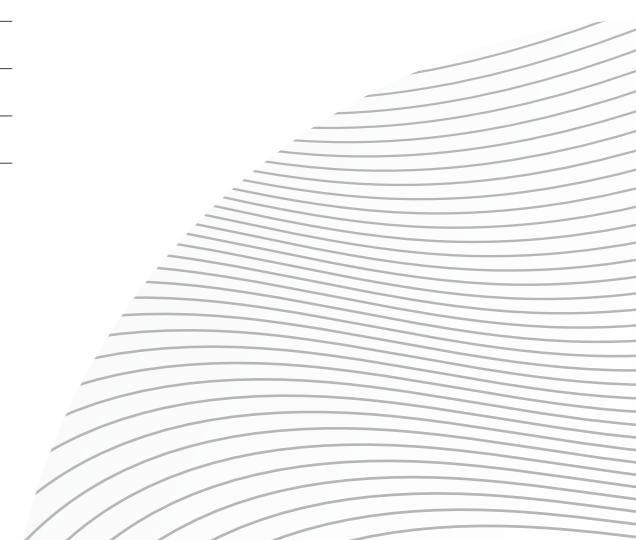
The Watch House, 199 Bermondsey St

Chapter 72, 72 Bermondsey St

Hej Coffee, 1 Bermondsey Square

Monmouth Coffee, St James's Rd

Gentleman's Baristas at Vinegar Yard



Lunch or Dinner

Bermondsey's eclectic food scene is famous across London for its choice and variety. Grab some home made pasta at Flour and Grape or enjoy an early dinner in its brick-lined space. A host of regular star traders and rotating guest-spots can be found at legendary street food haunt Maltby Street Market or Vinegar Yard.



LOCAL FAVOURITES

- Flour & Grape, 214 Bermondsey St

- José, 194 Bermondsey St

- Maltby Street Market, Ropewalk

- Iro Sushi, Tower Bridge Rd

- Roca Café, 188 Grange Rd

- Comptoir Gourmand, 96 Bermondsey St

- B Street Deli, 88 Bermondsey St

- Caphe House, 114 Bermondsey St

INTRO
BUILDING
AREA
CONTACT



Drinks after work

From authentic, London pubs with a modern twist, to fabulous neighbourhood gin and cocktail bars, Bermondsey has plenty of places sit and watch the world go by. For lovers of craft beer, the Bermondsey beer mile is home to several microbreweries within a mile and half radius.



LOCAL FAVOURITES

- Bermondsey Bar & Kitchen, 40 Bermondsey St
- The Woolpack, 98 Bermondsey St
- The Garrison, 99 Bermondsey St
- Nine Lives, 8 Holyrood St
- Bermondsey Art club, Tower Bridge Road
- Le Chevalier wine bar, Tower Bridge Road
- Vinegar Yard, St Thomas St





For your wellbeing

For a breath of fresh air or some space to clear your head, you'll want to make for the peaceful Bermondsey Spa Gardens or Tanner Street Park where you'll find five tennis courts, all free to play. For the more adventurous, Arch Climbing is a crazy room full of walls you can climb and there is a host of gyms in the area.

LOCAL FAVOURITES

Bermondsey Spa Gardens

Tanner Street Park

Arch Climbing, Tower Bridge Business

Pure Gym, 100 Drummond Rd

Fitness First, 8-18 London Bridge St

Cross Fit, 183-187 Southwark Park Rd



Shopping & Amenities

There are plenty of options for picking up staples on the way home. If you want to take home a little piece of that quirky and loveable Bermondsey vibe, you'd best head to Bermondsey 167, a treasure trove of fashion, homewares and collectibles.

LOCAL FAVOURITES

Bermondsey Corner, 142 Bermondsey St,

Bermondsey 167, 167 Bermondsey St

Borough Market, 8 Southwark St



Take in some culture

For lovers of culture, there is plenty to discover here. From The White Cube, one of London's premier art galleries to the Fashion & Textile Museum, with an ultra-cool rotating exhibits celebrating different fashion styles, periods and designers. For classic, arthouse and indie films, Kino cinema is a 52-seat independent cinema.

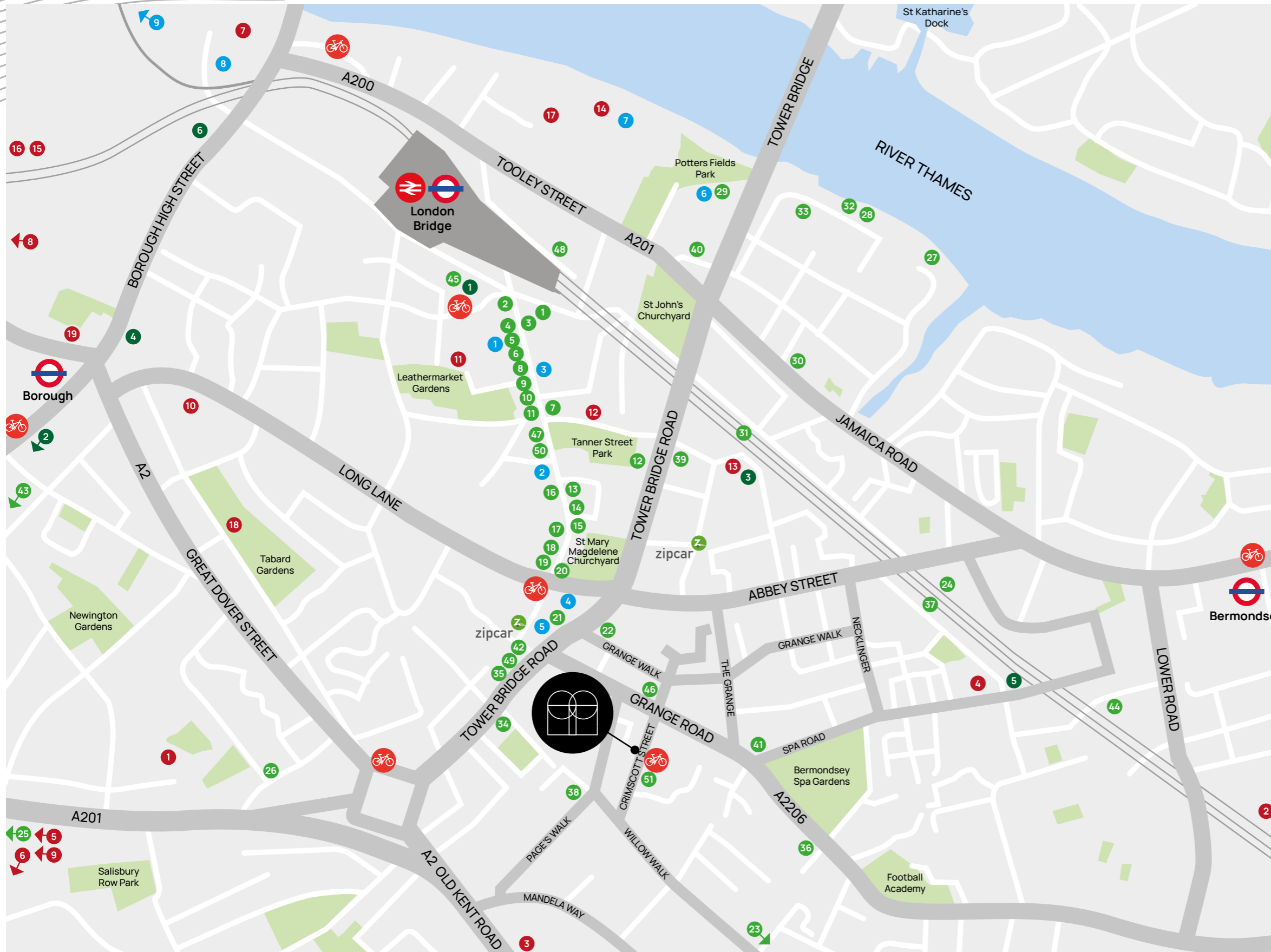
LOCAL FAVOURITES

White Cube Gallery, 144-152,
Bermondsey St

Fashion & Textile Museum, 83
Bermondsey St

Kino Cinema, 10 Bermondsey Square





Food and Drink

- 1 Kin + Deum
- 2 Bermondsey Bar & Kitchen
- 3 The Hide Bar
- 4 Tanner & Co
- 5 Chapter 72
- 6 Gidder Grocer
- 7 The Garrison
- 8 B Street Deli
- 9 Comptoir Gourmand
- 10 The Woolpack
- 11 José
- 12 Pique-Nique
- 13 Fuckoffee
- 14 Loyal Tavern
- 15 Hakata
- 16 Café Murano
- 17 Pizarro
- 18 Two One Four
- 19 Flour & Grape
- 20 WatchHouse
- 21 Hej Coffee
- 22 Bermondsey Arts Club
- 23 Crol and Co
- 24 Bone Daddies
- 25 Tupi
- 26 Sip and Sawdust
- 27 Blueprint
- 28 Le Pont de la Tour
- 29 The Ivy Tower Bridge
- 30 The Kings Arms
- 31 Doodle bar
- 32 Butlers Wharf Chop House
- 33 WatchHouse
- 34 Iro Sushi
- 35 M.Manze
- 36 The Grange Pub
- 37 Brew by Numbers
- 38 The Victoria
- 39 Constancia
- 40 Restaurant Story
- 41 Café Amisha
- 42 Nabatee
- 43 Mercato Elephant Park
- 44 Monmouth Coffee
- 45 Gentleman Baristas
- 46 Roca Café
- 47 Caphe House
- 48 Nine Lives
- 49 Lechevalier Wine Bar
- 50 Bermondsey Corner
- 51 Co-op Supermarket

Food Markets

- 1 Vinegar Yard
- 2 Mercato Metropolitan
- 3 Maltby Street Market
- 4 Tabard Street Market
- 5 Spa Terminus
- 6 Borough Market

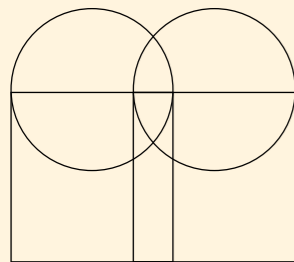
Culture

- 1 London Glassblowing
- 2 White Cube
- 3 Fashion and Textile Museum
- 4 Kino Bermondsey
- 5 Bermondsey Antique Market
- 6 Bridge Theatre
- 7 The Scoop
- 8 Tannery Arts
- 9 Globe Theatre

Wellbeing

- 1 Go Mammoth
- 2 Arch Climbing Wall
- 3 White Collar Boxing London
- 4 CrossFit Bermondsey
- 5 CrossFit Elephant & Castle
- 6 3 Aces CrossFit
- 7 Secret Boxing Gym
- 8 Flying Fantastic
- 9 Gymbox Elephant & Castle
- 10 Pure Gym
- 11 Studio 74
- 12 Globe House Yoga
- 13 Neals Yard Therapy Room
- 14 Thirdspace
- 15 The Fitting Rooms
- 16 F45
- 17 DW Fitness First
- 18 Football Pitches
- 19 3Tribes Yoga

INTRO
BUILDING
AREA
CONTACT



18 Crimscott Street
Bermondsey
London SE1 5TE

VISIT WEBSITE >

 **LEVY**
REAL ESTATE

Harry Cormack
+44 7815 463 822
harry.cormack@levyrealestate.co.uk

Megan Carr
+44 7896 899 798
megan.carr@levyrealestate.co.uk

USP.

Rupert Cowling
+44 7736 880317
rupert@usp.london

Max Humphreys
+44 7718 484284
max@usp.london

**STEYN
GROUP**

Union Street Partners and Levy Real Estate for themselves and for the lessors of this property whose agents they are give notice that: (1) the particulars are set out as a general outline only for the guidance of intending lessees, and do not constitute part of an offer or contract; (2) all descriptions, dimensions, references to condition and necessary permissions for use and occupation, and other details are given in good faith and are believed to be correct, but any intending lessees should not rely on them as statements or representations of fact but satisfy themselves by inspection or otherwise as to the correctness of each of them; (3) no person in the employment of Union Street Partners and Levy Real Estate has any authority to make or give any representation or warranty whatever in relation to this property. October 2022.
Branding and design by www.moyocreative.com