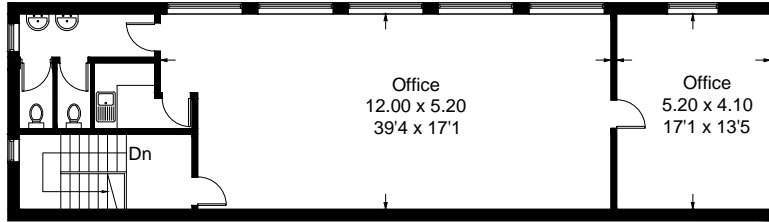


Unit B, Pier Road

Approximate Gross Internal Area = 819.4 sq m / 8819 sq ft

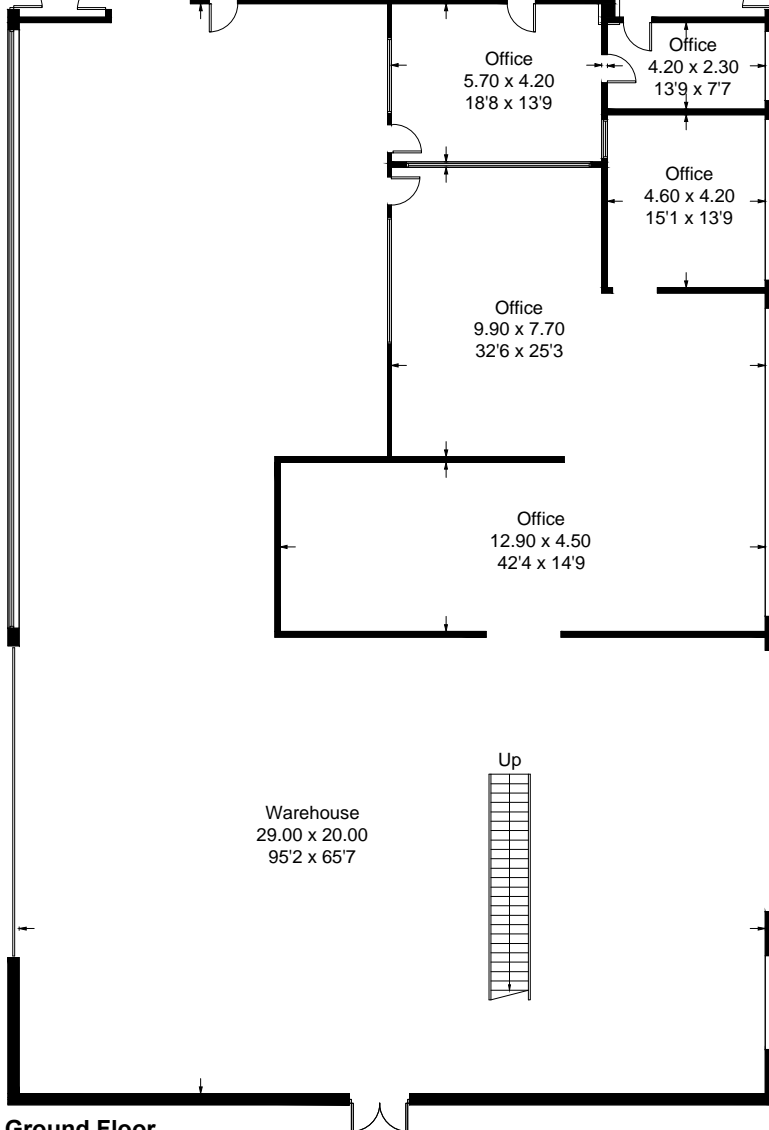
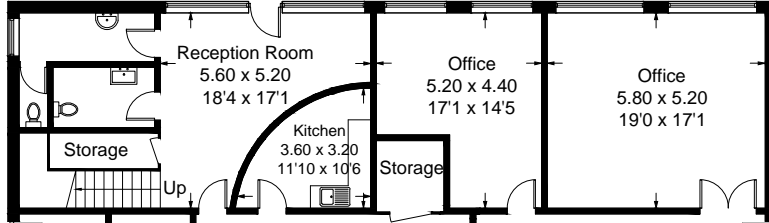
Mezzanine = 237.8 sq m / 2560 sq ft

Total = 1057.2 sq m / 11379 sq ft



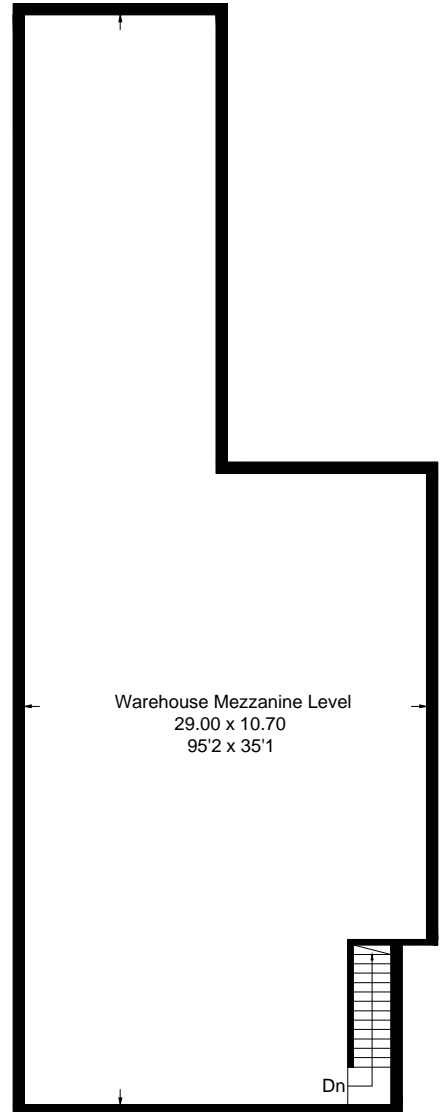
First Floor

1119 sq ft / 104 sq m



Ground Floor

7700 sq ft / 715.4 sq m



Mezzanine Level

2560 sq ft / 237.8 sq m

Illustration for identification purposes only, measurements are approximate, not to scale. floorplansUsketch.com © (ID894516)