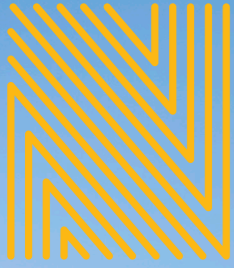




**NOVA**  
EDINBURGH



NOVA

3 PONTON ST · EH3 9QQ

02

03

High quality, open plan office accommodation located in Edinburgh's prime business district with outstanding views of Edinburgh Castle.

Nova comprises modern office accommodation arranged over ground and four upper floors. The suites are accessed from a manned entrance foyer with lift access to all floors.



The available offices benefit from:

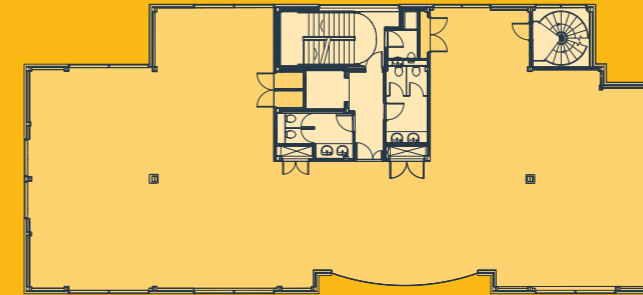
- Raised access floors
- Male and female and disabled toilets
- Wheelchair accessibility
- Tea prep facilities
- Passenger lift access to all floors
- Outstanding views of Edinburgh Castle
- Open plan suites
- Comfort cooling
- Shower facilities
- Secure car parking and bike racks

# Building Accommodation

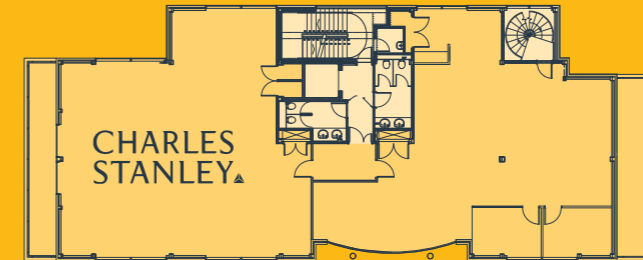
The suites have been measured in accordance with the RICS Code of Measuring Practice (6th Edition) and comprise the following net lettable areas:

Floor	sq ft	sq m
4th	Republic of Media	
3rd	3,409	317
2nd (Remaining)	1,804	168
2nd (Part Let)	Charles Stanley & Co	
1st	3,409	317
Ground (North)	1,568	146
Ground (South)	Unispace Global Ltd	
<b>Total</b>	<b>10,190</b>	<b>948</b>

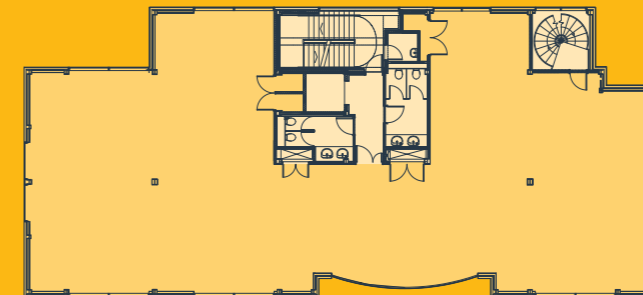
3rd Floor: NIA - 3,409 sq ft / 317 sq m



2nd Floor: NIA - 1,804 sq ft / 168 sq m



1st Floor: NIA - 3,409 sq ft / 317 sq m



Ground Floor: NIA - 1,568 sq ft / 146 sq m



# Lifestyle

Nova is located within Edinburgh's Exchange District, the city's prime business district. Situated on the west side of Ponton Street, the property benefits from excellent transport links, with both Haymarket railway station and the West End Princes Street tram stop within 12 minutes' walking distance. The location is well served by Edinburgh's extensive bus network, with frequent services on offer to all areas of the city.



06



The building benefits from proximity to a variety of hotels, bars and restaurants on Lothian Road and in Fountainbridge. Such local amenity complements a wider offering of city centre retail outlets on Princes Street and George Street.



# Neighbours & Amenities

## Local Occupiers

- 01 BlackRock, Hymans Robertson
- 02 Wood Mackenzie, i2 Office
- 03 Scott Moncrieff, Cromwell Property Group
- 04 Scottish Widows
- 05 Franklin Templeton
- 06 Lloyds Banking Group
- 07 Aberdeen Standard Investments
- 08 Brewin Dolphin  
IBM  
Green Investment Bank  
Law Society of Scotland  
PwC  
AON
- 09 DWF LLP
- 10 Companies House
- 11 Lindsays, Mott Macdonald, Hudson
- 12 Bank of Scotland
- 13 Turcan Connell
- 14 STV

## Health & Fitness

- 15 Hot Yoga
- 16 Pure Gym
- 17 One Spa
- 18 Therapie Clinic

## Restaurants, Cafés & Bars

- 19 Akva
- 20 Burger
- 21 Loudons Café & Bakery
- 22 Barburrito
- 23 Café Klaris
- 24 The Hanging Bat
- 25 Henrys Cellar Bar
- 26 The Chanter
- 27 Innis & Gunn Beer Kitchen
- 28 All Bar One
- 29 Philpotts Sandwich Bar
- 30 BrewDog

## Hotels

- 31 Sheraton Hotel
- 32 The Caledonian
- 33 Mercure Edinburgh Haymarket

## Convenience

- 34 Sainsbury's Local
- 35 Tesco Express
- 36 Co-op Food
- 37 Co-op Food

07





## FURTHER INFORMATION

For further information or to arrange a viewing  
please contact the joint letting agents:



**Mike Irvine**  
0131 247 3817  
mike.irvine@savills.com

**Henrietta Wilson**  
0131 247 3768  
henrietta.wilson@savills.com



**Simon Capaldi**  
0131 222 9621  
simon.capaldi@knightfrank.com

**Charlotte Swearman**  
0131 222 9630  
charlotte.swearman@knightfrank.com

**NOVA-EDINBURGH.COM**

Important notice Savills/Knight Frank for themselves and for the vendors or lessors of this property whose agents they are give notice that: (i) The particulars are set out as a general outline only for the guidance of intending purchasers or lessees, and do not constitute, nor constitute part of an offer or contract; (ii) all descriptions, dimensions, references to condition and necessary permissions for use and occupation, And other details are given in good faith and are believed to be correct but any intending purchasers or tenants should not rely on them as Statements or representations of fact but satisfy themselves by inspection or otherwise as to the correctness of each of them; (iii) no person in The employment of Savills/Knight Frank has any authority to make or give any representation or warranty whatsoever in relation to this property. Date of preparation of details March 2019.