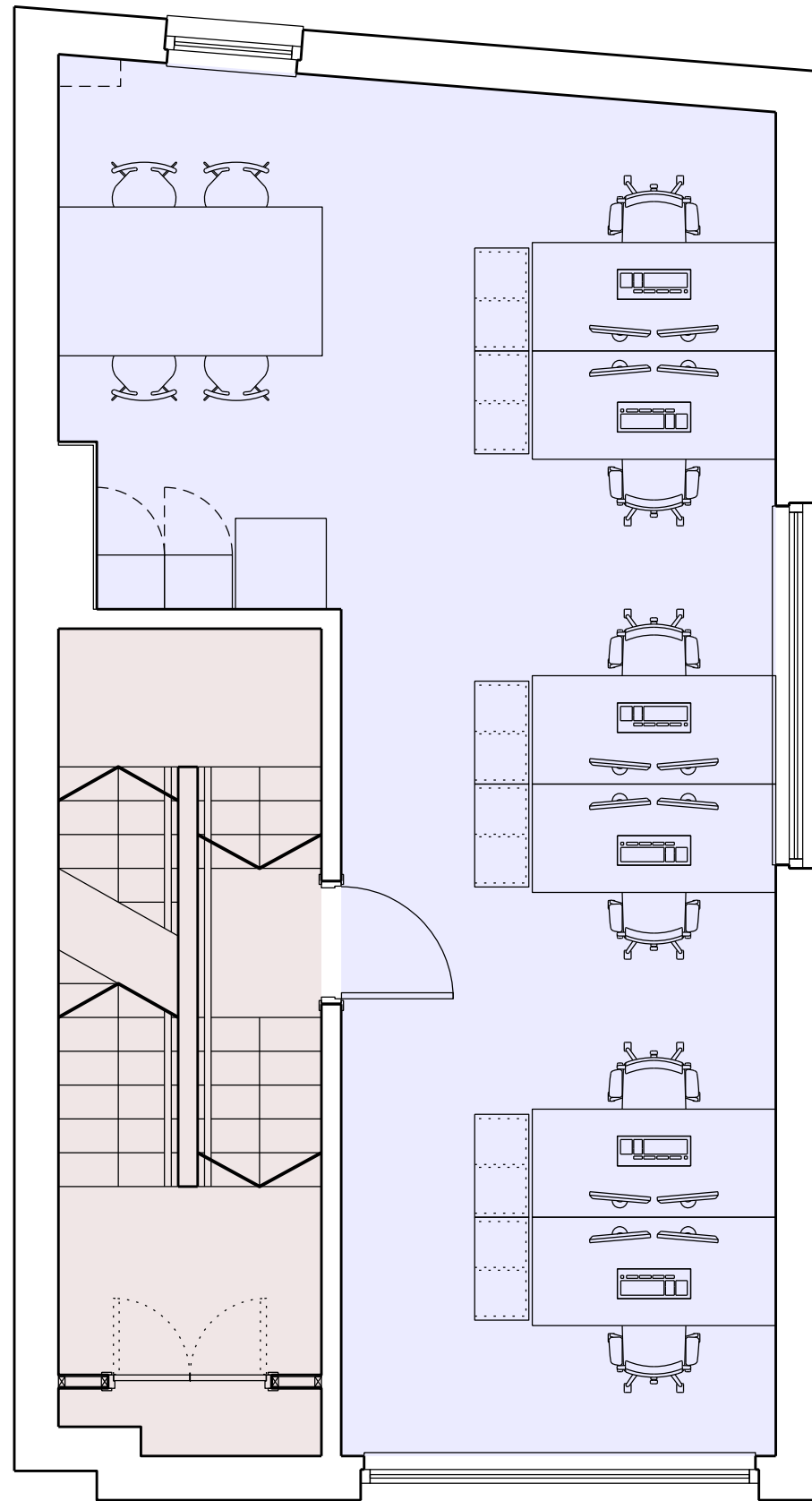


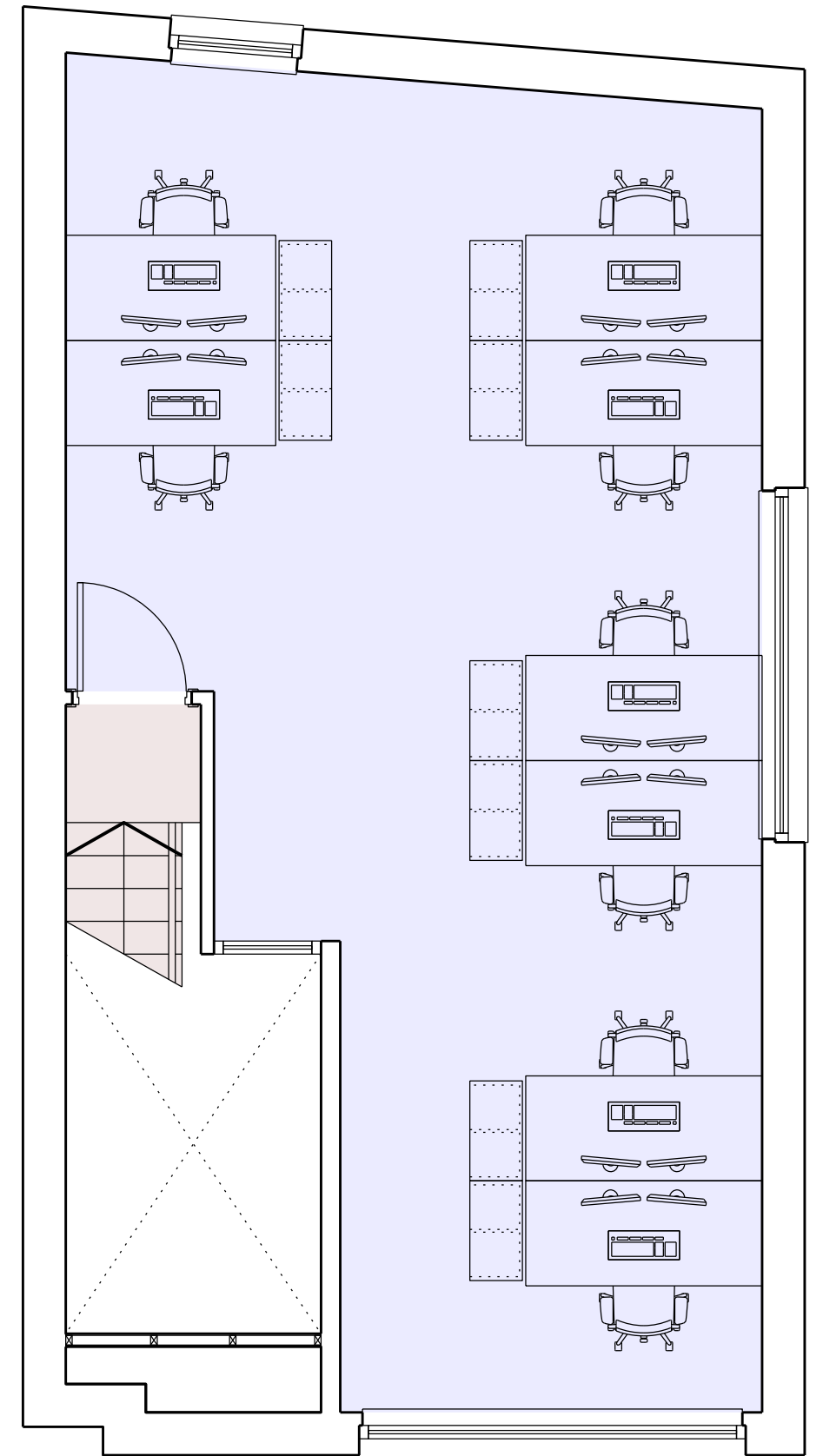
## GROUND FLOOR

NETT OFFICE AREA = 28.0m<sup>2</sup>  
 NETT COMMUNAL AREA = 19.8m<sup>2</sup>  
 GROSS INTERNAL AREA = 47.8m<sup>2</sup>



## FIRST FLOOR

NETT OFFICE AREA = 40.3m<sup>2</sup>  
 NETT COMMUNAL AREA = 11.7m<sup>2</sup>  
 GROSS INTERNAL AREA = 52.0m<sup>2</sup>



## SECOND FLOOR

NETT OFFICE AREA = 44.1m<sup>2</sup>  
 NETT COMMUNAL AREA = 1.8m<sup>2</sup>  
 GROSS INTERNAL AREA = 45.9m<sup>2</sup>

revision | date | notes

do not scale from this drawing  
 © Project3 architects limited. for terms and conditions refer to www.project3architects.com

project  
 4 back grafton street  
 title  
 floor areas  
 scale  
 1:50 @ A3  
 date  
 25/05/2018  
 drawing number-[revision]  
 545-SK-33-A  
 issued for  
 information only

**PROJECT3**  
 architects

kings court  
 railway street  
 altrincham  
 cheshire  
 WA14 2RD  
 t: 0161 233 0575  
 e: mail@project3architects.com  
 w: www.project3architects.com