

GENERAL NOTES

The contractor is to check all dimensions, setting out and details on site prior to placing any work in hand or placing orders for any components. Any discrepancies are to be reported to the Architect to enable instructions to be issued in advance of work being carried out.

NOTE 1
Dimensions marked * (or "Site Dimension") denote existing openings/site dimensions and are approximate and should be verified on site prior to manufacture/construction.

All dimensions are measured to face of masonry/metal or timber studwork unless noted otherwise.

Materials and Workmanship to be carried out in accordance with Building Reg's Approved Document 7.

ALL CONSTRUCTION TO BE CARRIED OUT IN ACCORDANCE WITH THE LATEST VERSION OF THE BRITISH STANDARDS AND BUILDING REGULATIONS.

The contractor shall use those materials and manufacturers stated in the Architects and other consultants documentation or equivalent materials and manufacturers if approved by the specifier.

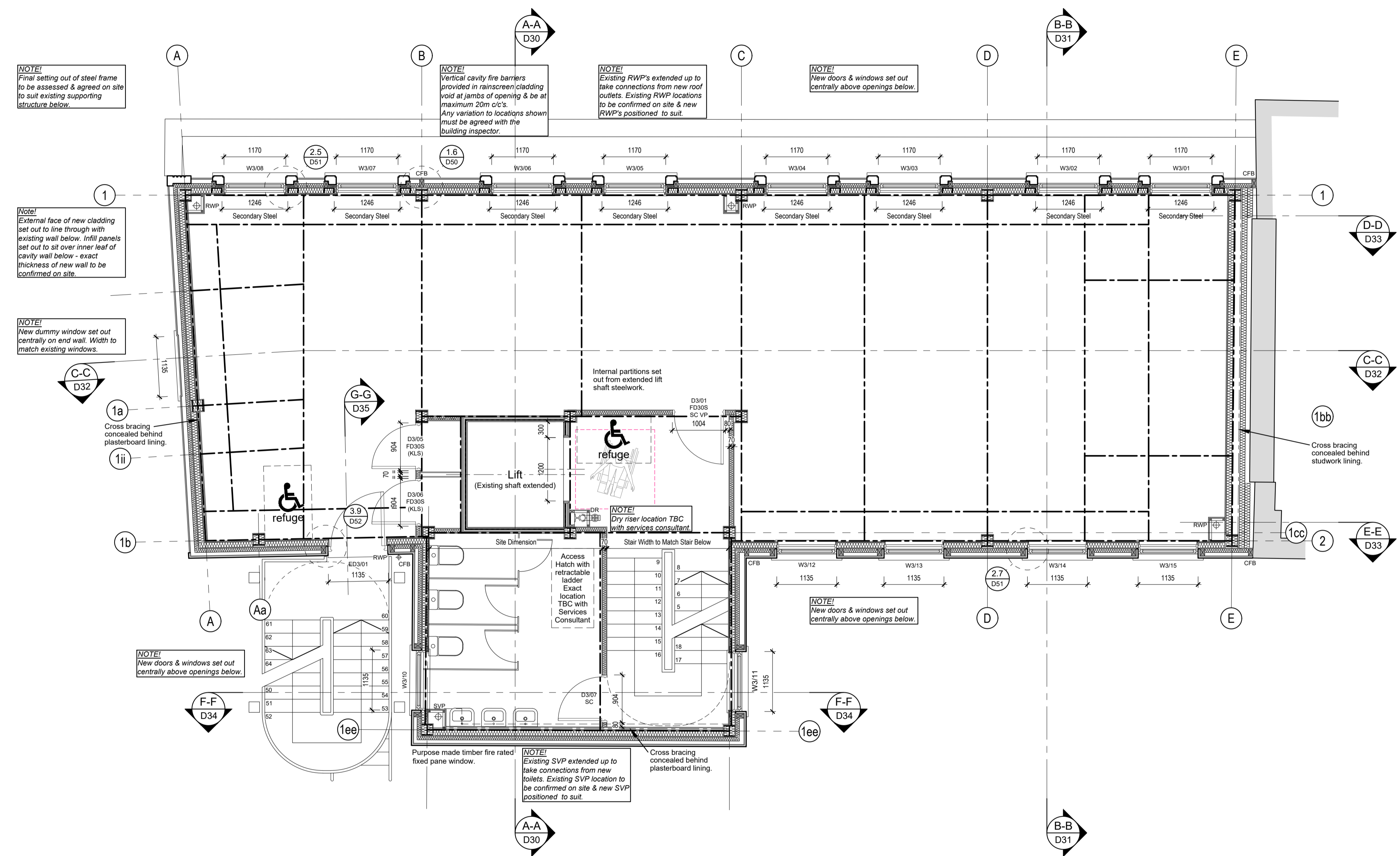
STRUCTURAL ENGINEERING DESIGN
For all structural engineering design information refer to Entuitive drawings and specification.

SERVICES DESIGN
For all M and E design information refer to KUT LLP's drawings and specification.

SURVEYED INFORMATION
These drawings are based on surveyed information provided by the client. Initial survey carried out by Survey Solutions in February 2014. Check survey carried out by 3D Services (South East) Ltd in November 2020. Where discrepancies arise, 3DS information take priority. Existing building layouts/details may have changed since surveys were completed.

PLAN LEGEND	
D301	Internal door reference - floor/door number
W301	Window reference - floor/ window number
RWP	Rainwater downpipe
RWO	Rainwater outlet
SVP	Soil & vent pipe
SVP	Soil & vent pipe with offset from above
SS	Stub stack
AAV	SS with air admittance valve above spill level
FS	Floor socket for direct connection of WC pans
FG	Floor gully
EF	Indicative extract fan location
CFB	Cavity Fire Barrier
SH	Service hole
CP	Concrete padstone (refer to engineer's drawings)
SB	Steel beam above (refer to engineer's drawings)
TS	Timber stud partition (with sound quilt where shown)
FC	Full height ceiling line
SL	2100mm Skelling line
SL	1800mm Skelling line
SL	1500mm Skelling line

NOTE!
Dimensions are to face of metal/timber stud and masonry walls, excluding plasterboard & plaster



Preliminary

REV	DATE	REVISIONS:	BY	REV	DATE	REVISIONS:	BY	STATUS:
P1	14/12/20	Minor amendments to suit revisions to 4th floor above.	GRB	P7	16/06/21	Front windows amended to suit stone suppliers details; party wall & adjacent steelwork revised to suit site surveyed information; lift shaft construction revised; lift door opening dimensions amended to suit manufacturer's drawings; SVP omitted & dry riser relocated in lift lobby; internal layouts amended to suit end user's fit out drawings; fire doors revised to suit fire consultants drawings.	GRB	
P2	18/02/21	Amended to suit Structural Engineer's initial design; notes added.	GRB	P8	16/11/21	Internal fit out & demolition omitted.	GRB	
P3	28/02/21	Wheelchair refuge note & legend added.	GRB					
P4	01/03/21	Access hatch to plant area added in toilets.	GRB					
P5	15/04/21	External escape stair and end user's internal layout added.	GRB					
P6	10/05/21	Lift door opening amended to suit lift manufacturer's details; stone profiles updated; stone support steel & fire barriers shown at openings.	GRB					

CLIENT:	Trevellyan Developments	PROJECT:	517-523 Fulham Road London, SW6 1HD
SCALE:	1:50 (A1 ORIGINAL)	DRAWING:	Third Floor Plan (New Floor)
DRAWN:	GRB	20176	D14
DATE:	December 2020		P8

architecture planning masterplanning
Broadmeade House, Farnham Business Park,
Weydon Lane, Farnham, Surrey GU9 8QT.
info@osparchitecture.com www.osparchitecture.com
Tel: 01252 267878