

TO LET - OFFICE

---

# GREENSIDE

12 Blenheim Place, Edinburgh, EH7 5JH



## Key Highlights

- 4,892 sq ft
- Fully fitted suite
- Modern open plan office accommodation
- Available on a Sublease

---

SAVILLS Edinburgh  
Wemyss House  
Edinburgh EH3 6DH  
**0131 247 3800**  
[savills.co.uk](https://www.savills.co.uk)



## Description

Having originally been built by Scottish Equitable in 1989, Greenside was subject to a significant refurbishment. The building was stripped back to its shell and redeveloped by Chris Stewart Group to offer a unique and modern office space.

On the ground floor, there is 4,892 sq ft of open plan office accommodation available on a sublease until April 2026 which has 4 parking spaces available with it. The suite is fully fitted and could potentially come with furniture included.

## Location

Greenside is situated off Blemheim Place and has a variety of amenities including artisan retail, restaurants and coffee shops. The office building is well served by leisure and retail facilities including St James' Quarter, St Andrew Square and New Waverley. It is also well connected to transport links with Waverley Station 5 minutes' walk away and a number of bus routes situated on Leith Walk which is adjacent to Blenheim Place.

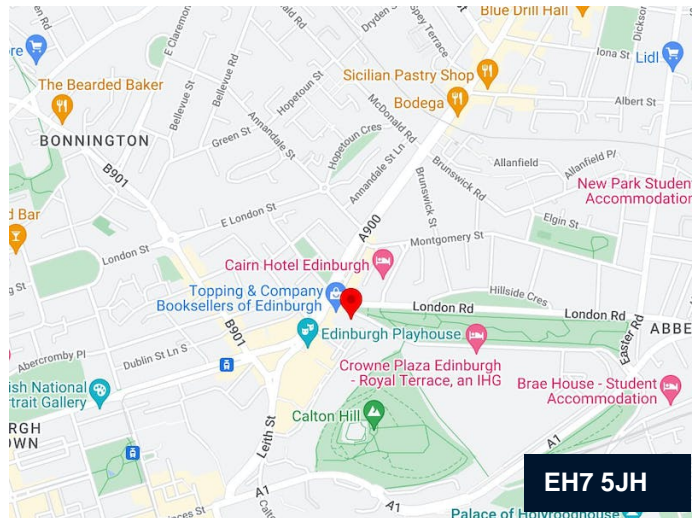
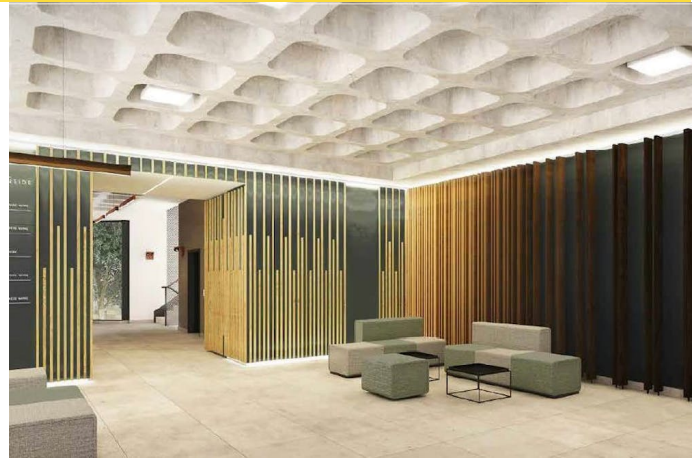
## Accommodation

The accommodation comprises the following areas:

Name	sq ft	sq m	Availability
1st - Level 1	4,892	454.48	Available
<b>Total</b>	<b>4,892</b>	<b>454.48</b>	

## Business Rates

Upon Enquiry



## Contact

### Mike Irvine

0131 247 3817

07919 918 664

mike.irvine@savills.com

### Kate Jack

07815 032 092

kate.jack@savills.com

## IMPORTANT NOTICE

Savills, their clients and any joint agents give notice that: 1. They are not authorised to make or give any representations or warranties in relation to the property either here or elsewhere, either on their own behalf or on behalf of their client or otherwise. They assume no responsibility for any statement that may be made in these particulars. These particulars do not form part of any offer or contract and must not be relied upon as statements or representations of fact. 2. Any areas, measurements or distances are approximate. The text, photographs and plans are for guidance only and are not necessarily comprehensive. It should not be assumed that the property has all necessary planning, building regulation or other consents and Savills have not tested any services, equipment or facilities. Purchasers must satisfy themselves by inspection or otherwise. Generated by AgentsInsight / Generated on 03/03/2023

savills