

TO LET - OFFICE

22 NORTHUMBERLAND STREET SOUTH WEST LANE

Edinburgh, EH3 6JD



Key Highlights

- 1,531 sq ft
- Bright, open plan office space with meeting rooms and kitchens in situ
- First floor mews office extending to 1,531 sq ft
- Unique opportunity within the heart of Edinburgh's New Town

SAVILLS Edinburgh
Wemyss House
Edinburgh EH3 6DH
0131 247 3800
savills.co.uk



Description

This office accommodation is in a highly sought after location, with 1,521 sq ft available and garage parking for 2 cars. This unique opportunity offers central, mews accommodation with access via the front door on Northumberland Street SW Lane.

The 1st floor is a large and bright open plan office with a sizable kitchen/break out area and WC facilities.

Location

The property is located in the heart of Edinburgh's New Town and is a stone's throw away from George Street and Princes Street. As well as being in close proximity to the tram, it is walkable distance from Waverley Station.

There are a number of restaurants, bars and cafes that are in the immediate vicinity, including the Wee Buddha, Novapizza, The Pantry, St Vincent's Bar and the plethora of amenities that George Street and Princes Street have to offer.

Accommodation

The accommodation comprises the following areas:

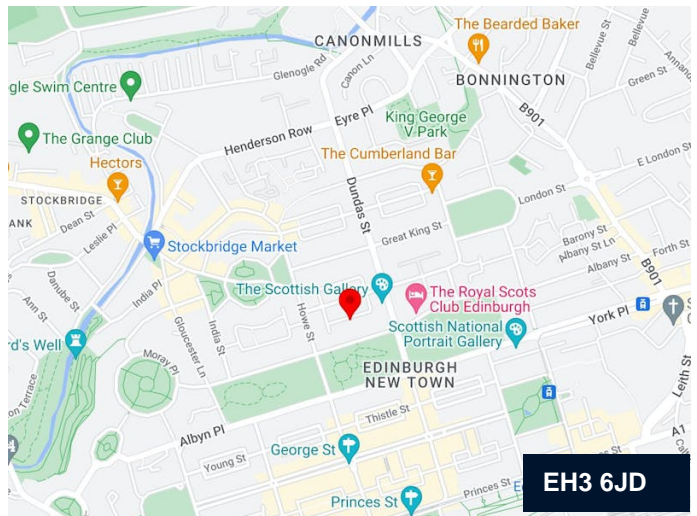
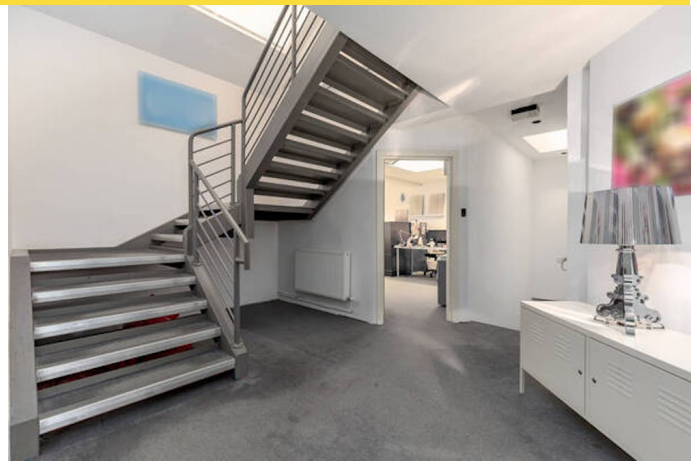
Name	sq ft	sq m	Availability
1st	1,531	142.23	Available
Total	1,531	142.23	

Viewings

Viewing can be arranged via the sole leasing agents.

Business Rates

Rates payable: £6.64 per sq ft
(based upon Rateable Value: £37,000)



Contact

Kate Jack

07815 032 092

kate.jack@savills.com

Chris Smith

07974 063 892

chris.smith@savills.com

IMPORTANT NOTICE

Savills, their clients and any joint agents give notice that: 1. They are not authorised to make or give any representations or warranties in relation to the property either here or elsewhere, either on their own behalf or on behalf of their client or otherwise. They assume no responsibility for any statement that may be made in these particulars. These particulars do not form part of any offer or contract and must not be relied upon as statements or representations of fact. 2. Any areas, measurements or distances are approximate. The text, photographs and plans are for guidance only and are not necessarily comprehensive. It should not be assumed that the property has all necessary planning, building regulation or other consents and Savills have not tested any services, equipment or facilities. Purchasers must satisfy themselves by inspection or otherwise. Generated by AgentsInsight / Generated on 06/06/2023



