



TO LET

EVERYMAN



NEW
BASEMENT
LEISURE
UNIT
TO LET

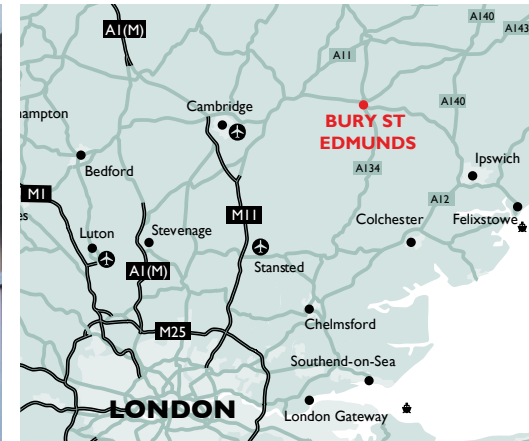
10,850 SQ FT

ADJACENT TO NEW CINEMA
EVERYMAN

PRIMARK®
COMING SOON
(SPRING 2024)

LOCATION

BURY ST EDMUNDS



**25%
AFFLUENT
ACHIEVERS**

Bury St. Edmunds residents are above average affluent achievers and 15% higher than the UK average

£195.8M

Comparison Goods Spend ranking it alongside St. Albans

7TH PLACE

Ahead of Salisbury and Winchester; alongside Horsham.

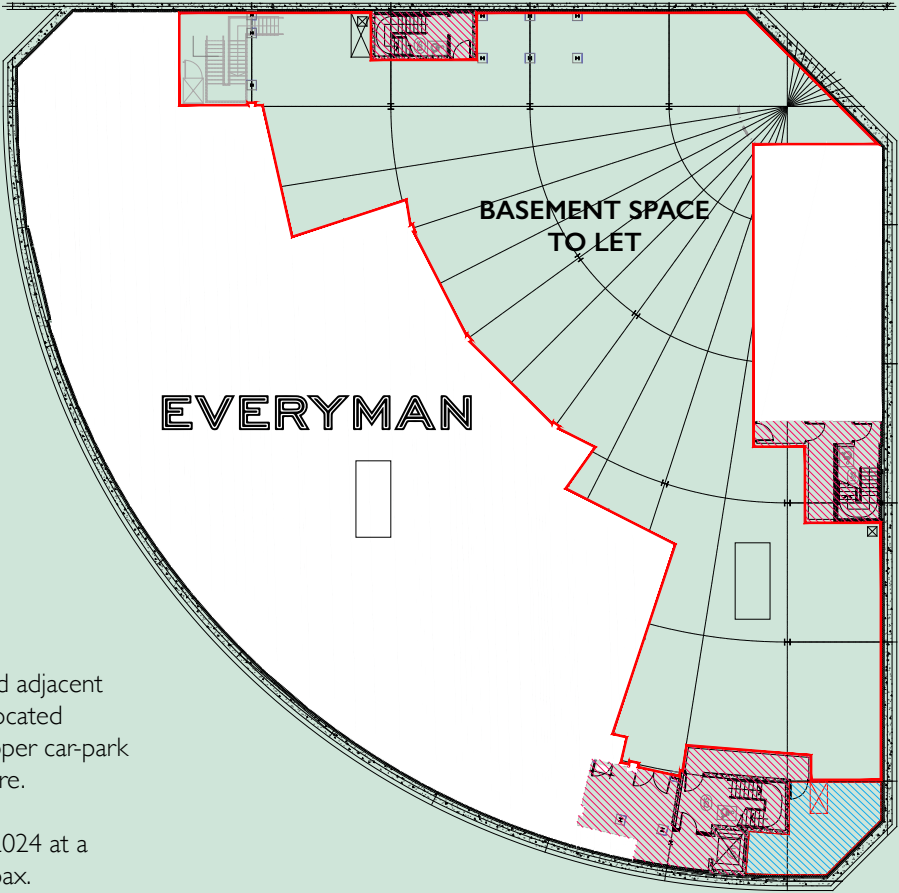
*CACI Minor Class rankings



BURY ST EDMUNDS
RETAIL OPPORTUNITIES

ACCOMMODATION NEW LEISURE UNIT

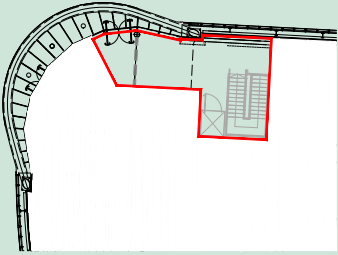
BASEMENT
10,850 SQ FT



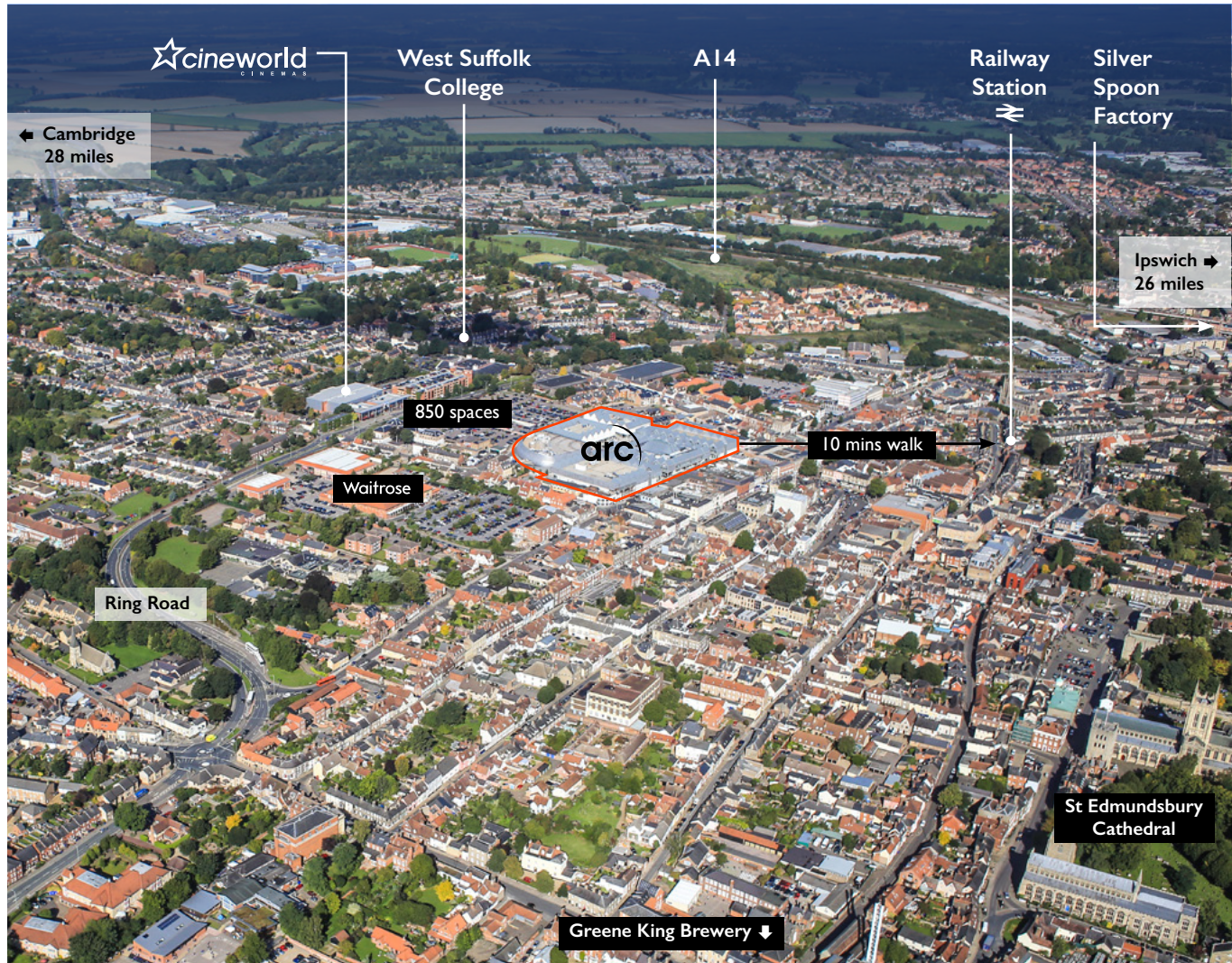
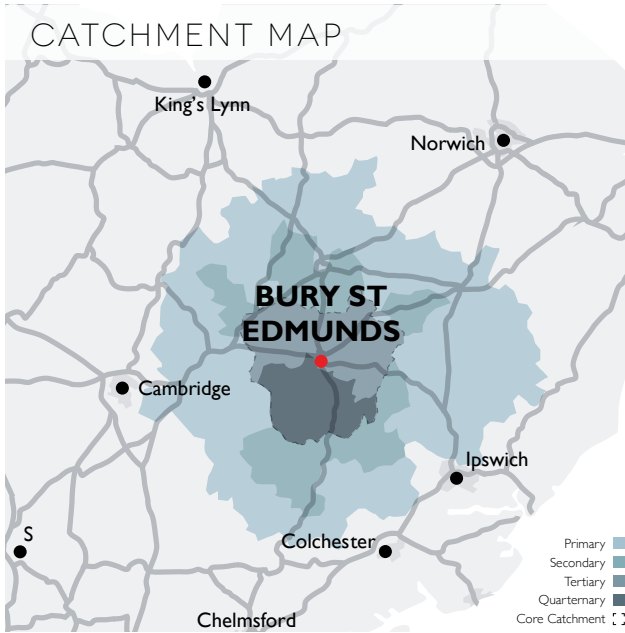
A new leisure unit is to be created adjacent the arrival of Everyman Cinema located adjacent the town's principal shopper car-park and beneath the new Primark store.

New lease available from March 2024 at a commencing rental of £125,000 pax.

GROUND FLOOR ENTRANCE
C.500 SQ FT



CGI OF PROPOSED NEW PRIMARK



OVER 10,000 STUDENTS

West Suffolk College, a Top 5% Further Education College in the UK

Total catchment in excess of
500,000 PEOPLE

Major Employers

GREENE KING
PROPERTY ACQUISITIONS

Silver Spoon

CLAAS



CENTRE FACTS AND FIGURES

FOOTFALL

C. 8M annually
C. 150K weekly



850
Car Parking
Spaces



265,000
sq ft of
floor space

36
Retailers and
restaurants

ANCHORS

RETAIL & LEISURE



THE APEX

Award winning live music, theatre and entertainment venue with a unique moveable floor in the main 500 seater auditorium.



PRIMARK®
EVERYMAN
COMING SOON



SCHEME PLAN

St Andrews Street South (Buses, Taxis and Access only)



Auction Street



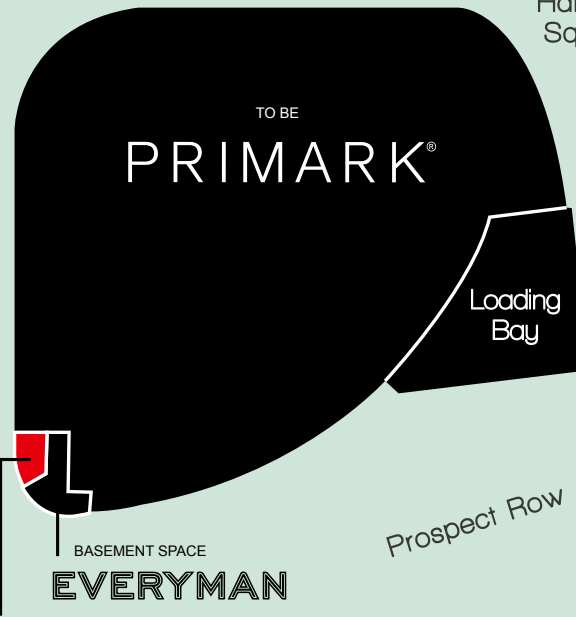
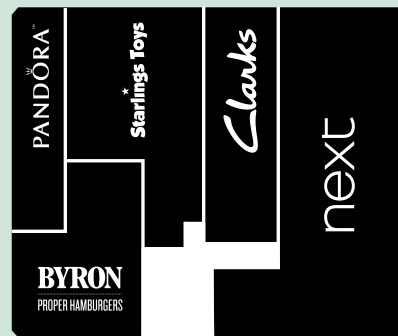
Gosnold Street



Hanchet Square

wagamama

Charter Square



Prospect Row



arc
BURY ST EDMUNDS
RETAIL OPPORTUNITIES

CONTACT



FOR RETAIL LEASING ENQUIRIES, PLEASE CONTACT:



STEVE MORGAN
07713 311358
steve.morgan@eu.jll.com



DAMIAN SUMNER
07974 085 738
damian.sumner@brasierfreeth.com

MARK POYNER
07803 234 866
mark.poyner@brasierfreeth.com

JLL for themselves and for the vendors or lessors of this property whose agents they are, give notice that:- a. the particulars are set out as a general outline only for guidance and do not constitute, nor constitute part of, an offer or contract; b. all descriptions, dimensions, references to condition and necessary permissions for use and occupation, and other details are believed to be correct, but any intending purchasers, tenants or third parties should not rely on them as statements or representations of fact but satisfy themselves that they are correct by inspection or otherwise; c. All properties are measured in accordance with the RICS property measurement, 1st Edition May 2015 (incorporating IPMS) unless designated NIA/GIA/GEA, in which case properties are measured in accordance with the RICS Code of Measuring Practice (6th Edition); d. Any images may be computer generated. Any photographs show only certain parts of the property as they appeared at the time they were taken. © 2023



BURY ST EDMUNDS
RETAIL OPPORTUNITIES