



144 ELLIOT STREET

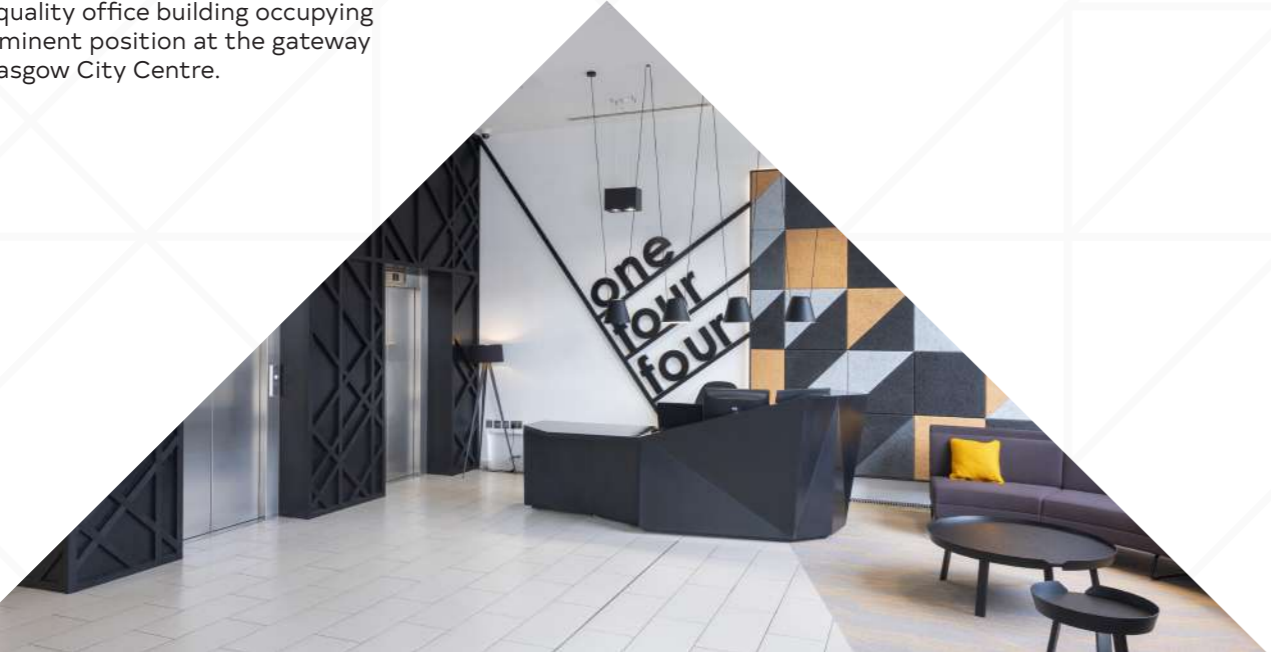
Click [here](#)  
to watch  
our film



**TO LET**

# 11,400 sq ft of superb workspace

144 Elliot Street is a 40,247 sq ft high quality office building occupying a prominent position at the gateway to Glasgow City Centre.







New look,  
new feel!



# Centre of the action

## NEIGHBOURING OCCUPIERS

- 01 Scottish Power HQ
- 02 KPMG, Zurich & Wood Group
- 03 GE & NHS
- 04 Daily Record/Sunday Mail
- 05 French Duncan & Clintec
- 06 Skypark:  
Leidos  
PTW  
Startline Motor Finance  
V.Ships UK  
Crocodile Communication  
Fleet Alliance Limited  
Serco Global Services
- 07 Xero Energy
- 08 Equator Digital Agency

## AMENITIES

- 01 Springfield Quay Leisure Park
- 02 Nuffield Health
- 03 SSE Hydro
- 04 SEC / Armadillo
- 05 The Rotunda Bar & Diner
- 06 Big Licks
- 07 Currys PC World
- 08 Lidl
- 09 El Perro Negro
- 10 Lebowskis
- 11 Accento Café
- 12 Pickled Ginger
- 13 Clydebuilt Bar & Kitchen
- 14 India Quay
- 15 Wilson's Catch of the Day

## HOTELS

- 01 Radisson RED
- 02 Hilton Garden Inn
- 03 Campanile
- 04 Glasgow Argyle Hotel
- 05 Premier Inn
- 06 Glasgow Marriott
- 07 Hilton Hotel

## NEXTBIKE STATIONS

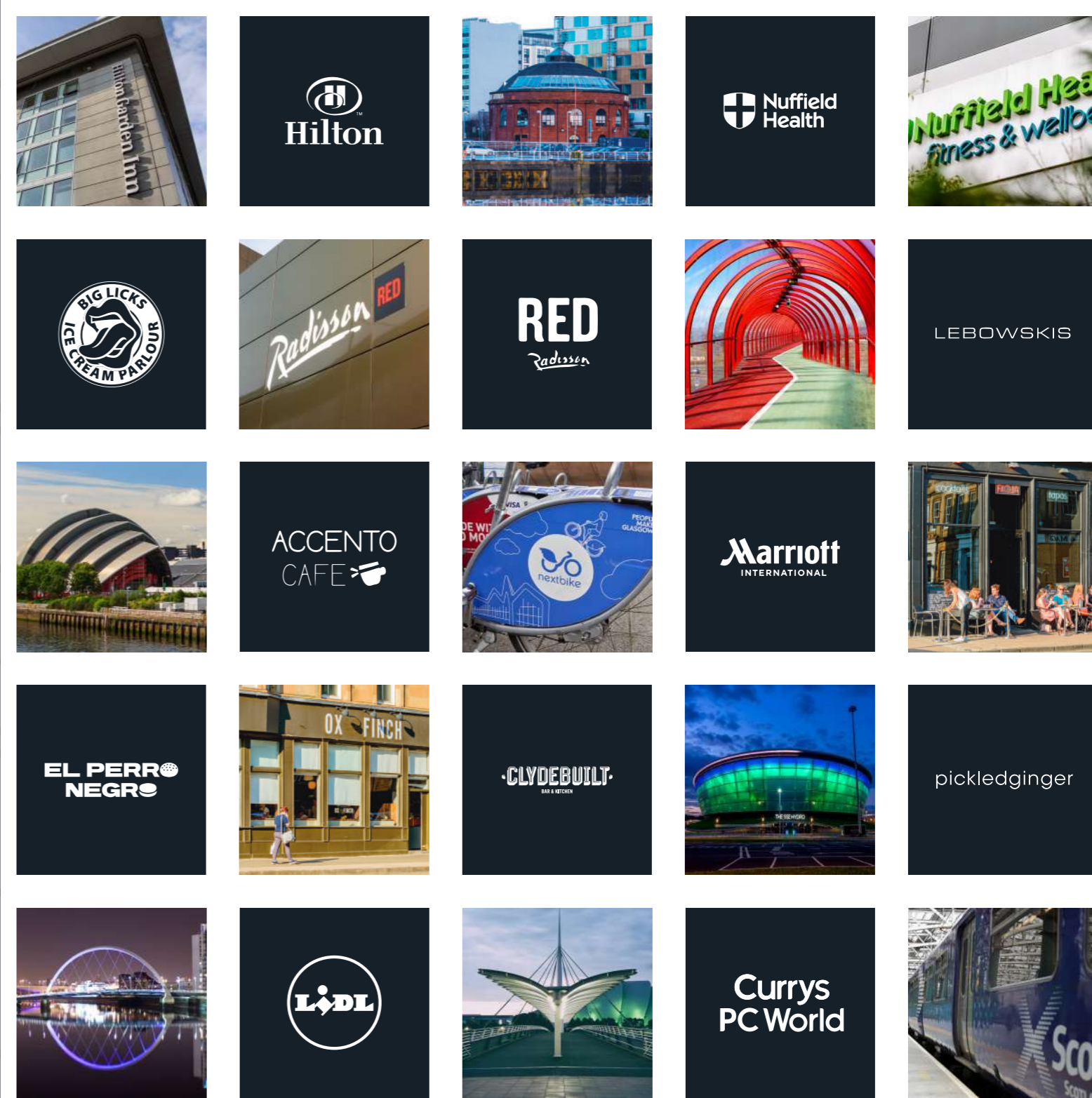
- 01 SEC Station
- 02 Finnieston Street Station





# Work-life Balance

Lying between the City Centre and the West End, Finnieston combines commerce with many of Glasgow's main leisure attractions.



# Top Spec

The subjects comprise a modern four storey office building, offering flexible and sophisticated accommodation together with a generous provision of secure car parking.



Intruder alarm system



Metal full raised access flooring



Commissionaire manned reception



Large floor plates



Air conditioning system



2 x 8 person passenger lifts



Floor to ceiling height of 2.7m



Metal suspended ceilings with recessed LED lighting



Male, female and accessible toilets

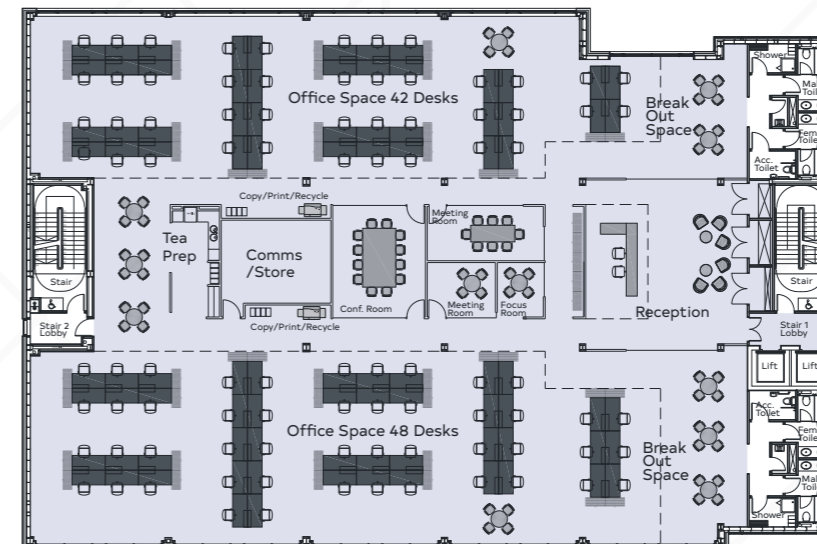


Showers



17 car parking spaces

## Space Plan \*PLAN NOT TO SCALE



## Accommodation

FLOOR	SQ FT	CAR PARKING
2nd	11,400	17

## Lease Terms

The accommodation is available to lease on new full repairing and insuring terms, for a period to be agreed.



# Further Information

For further information, please contact the joint letting agents:

## CBRE

**Andy Cunningham**

0141 204 7667

07793 808 490

[andy.cunningham@cbre.com](mailto:andy.cunningham@cbre.com)

**Hannah Lowe**

0141 204 7690

07917 651 872

[hannah.lowe@cbre.com](mailto:hannah.lowe@cbre.com)



**Knight  
Frank**

**Colin MacKenzie**

0141 566 6024

07912 805 890

[colin.mackenzie@knightfrank.com](mailto:colin.mackenzie@knightfrank.com)

**Sarah Hagen**

0141 566 6987

07468 724 253

[sarah.hagen@knightfrank.com](mailto:sarah.hagen@knightfrank.com)