



TO LET (May Sell)

**13** | **BOND  
COURT**  
LEEDS LS1 2JZ

Superb self-contained office suite  
in a prime central location **2,035 sq ft**

# 13 BOND COURT

LEEDS LS1 2JZ

Leeds Station is a very short walk from the building and Leeds' retail core is on the doorstep therefore providing an excellent central location.

## LOCATION

13 Bond Court is in a prime location in Leeds City Centre on the corner of Park Row and Bond Court, less than 2 minutes walk from the Leeds Train Station.

Bond Court is a popular substantial public open space with coffee shops and outdoor seating. There are various established restaurants, bars and coffee shops within 2 minutes walk including El Gato Negro Tapas, Tattu, La Bottega and Gaucho.

## DESCRIPTION

13 Bond Court is an attractive, period building with a restaurant at ground & first floor levels and self-contained office premises on the second floor.

The second floor office suite provides very high quality accommodation benefitting from excellent natural light and specification features including:

- > New carpeting
- > New decorations
- > Modern suspended ceiling
- > Flat-panel LED lighting
- > 3 compartment perimeter power and data trunking
- > High quality w/c's
- > Gas central heating
- > Passenger lift
- > Entirely self-contained suite

## BUSINESS RATES

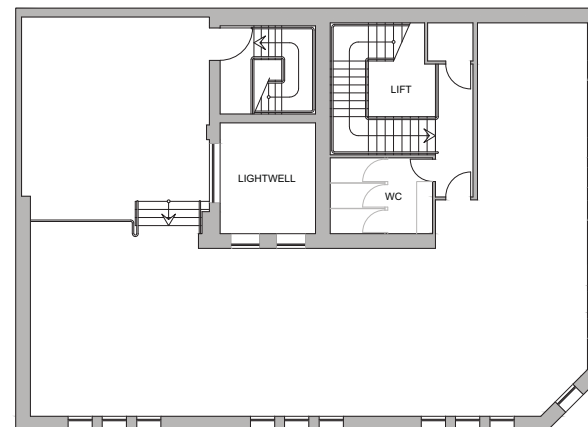
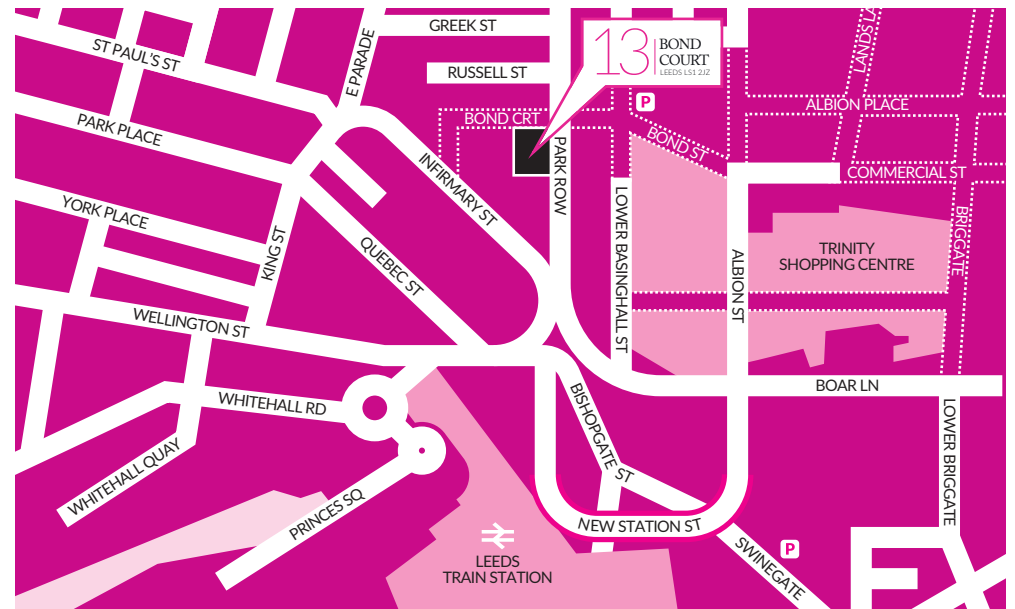
The Rateable Value for the office is £23,750.

## EPC

The building has an energy performance asset rating of band D (83).

## TERMS

The suite is available either For Sale or To Let by way of a new full repairing and insuring lease for a term to be negotiated and agreed. For information on the quoting price / rent please contact the sole agents.



## VIEWING & FURTHER INFORMATION

Clem McDowell  
clemmcdowell@cartertowler.co.uk

James Jackson  
jamesjackson@cartertowler.co.uk

**CARTER  
TOWLER**

0113 245 1447  
www.cartertowler.co.uk

**IMPORTANT NOTICE RELATING TO THE MISREPRESENTATION ACT 1967 AND THE PROPERTY MISDESCRIPTION ACT 1991**  
Carter Towler on their behalf and for the sellers or lessors of this property whose agents they are, give notice that: (i) The Particulars are set out as a general outline only for the guidance of intending purchasers or lessees, and do not constitute, nor constitute part of, an offer or contract; (ii) All descriptions, dimensions, references to condition and necessary permissions for use and occupation, and other details are given in good faith and are believed to be correct, but any intending purchasers or tenants should not rely on them as statements or representations of fact, but must satisfy themselves by inspection or otherwise as to the correctness of each of them; (iii) No person employed by Carter Towler has any authority to make or give any representation or warranty in relation to this property. Unless otherwise stated prices and rents quoted are exclusive of VAT. The date of this publication is June 2023.