



THE
GLADES
BROMLEY



BROMLEY THE OPPORTUNITY

2ND

most affluent town in the London suburbs



c.17,000
students

£493M
(7th) Comparison goods spend

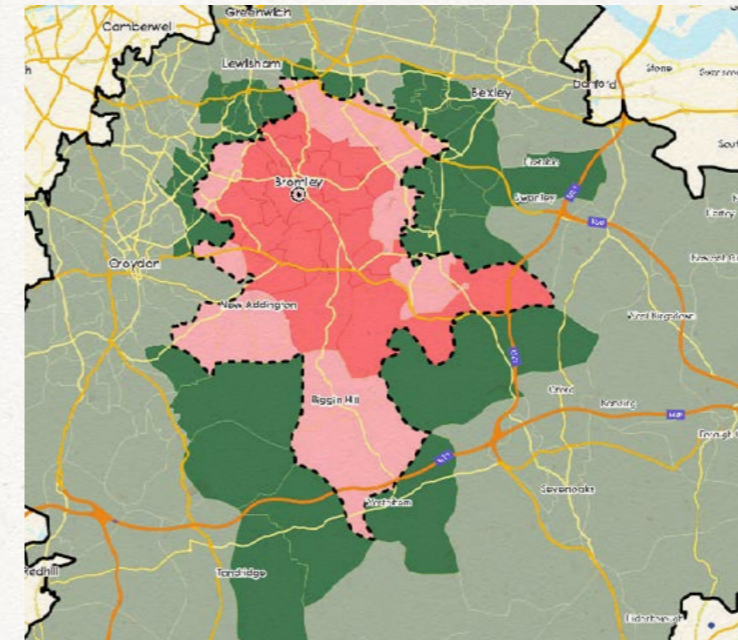
4.5%

unemployment rate, the second lowest of any borough in London

Bromley has one of the largest economies in Greater London

NO.1

Largest of all 32 London Boroughs

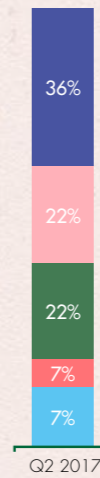


CATCHMENTS

- Primary
- Secondary
- Tertiary
- Quaternary
- The Glades Q2 2017



ACORN BREAK DOWN



- Affluent Achievers
- Rising Prosperity
- Comfortable Communities
- Financially Stretched
- Urban Adversity

KEY ACORN GROUPS

36%
Affluent Achievers

22%
Rising Prosperity

22%
Comfortable Communities

SHOPPER PROFILE

4TH

highest shopper population within the London Borough

58%

of the total catchment population are, 'Affluent Achievers' and 'Rising Prosperity'



THE GLADES

BROMLEY SHOPPING CENTRE



£58

average spend

500,000

sq ft

120+

stores anchored by M&S,
Debenhams and Boots

20M

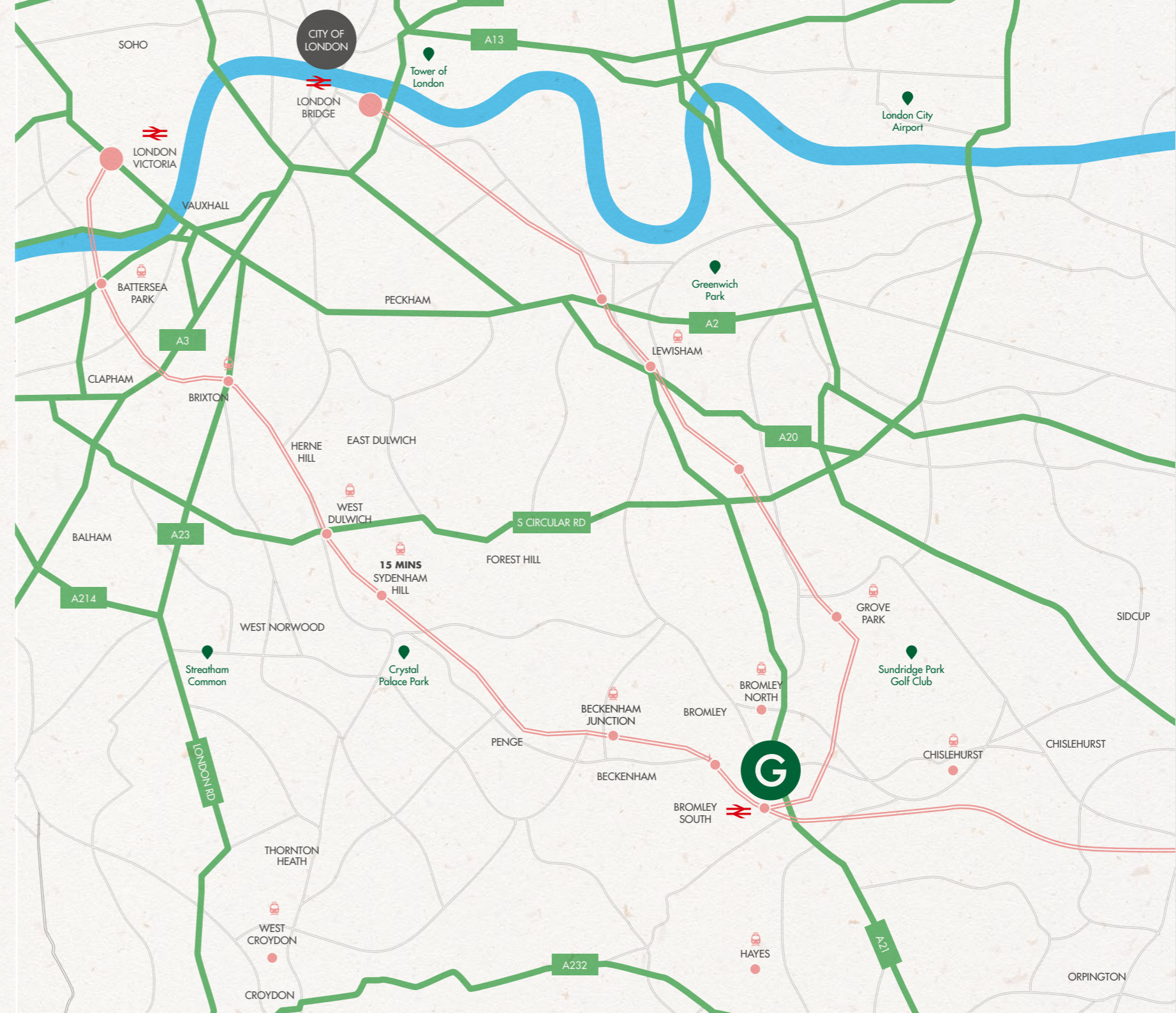
per annum footfall

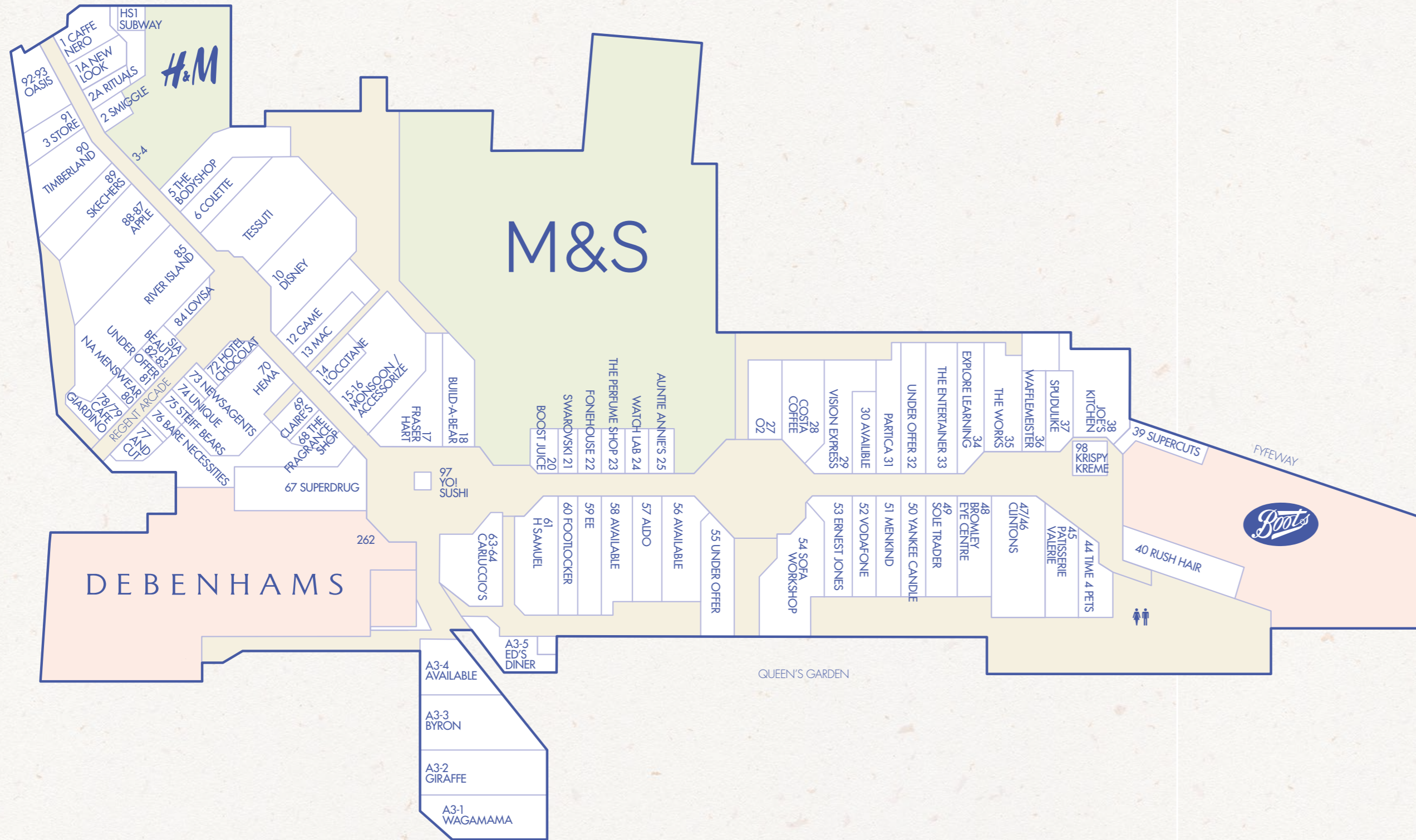
1,500

parking spaces

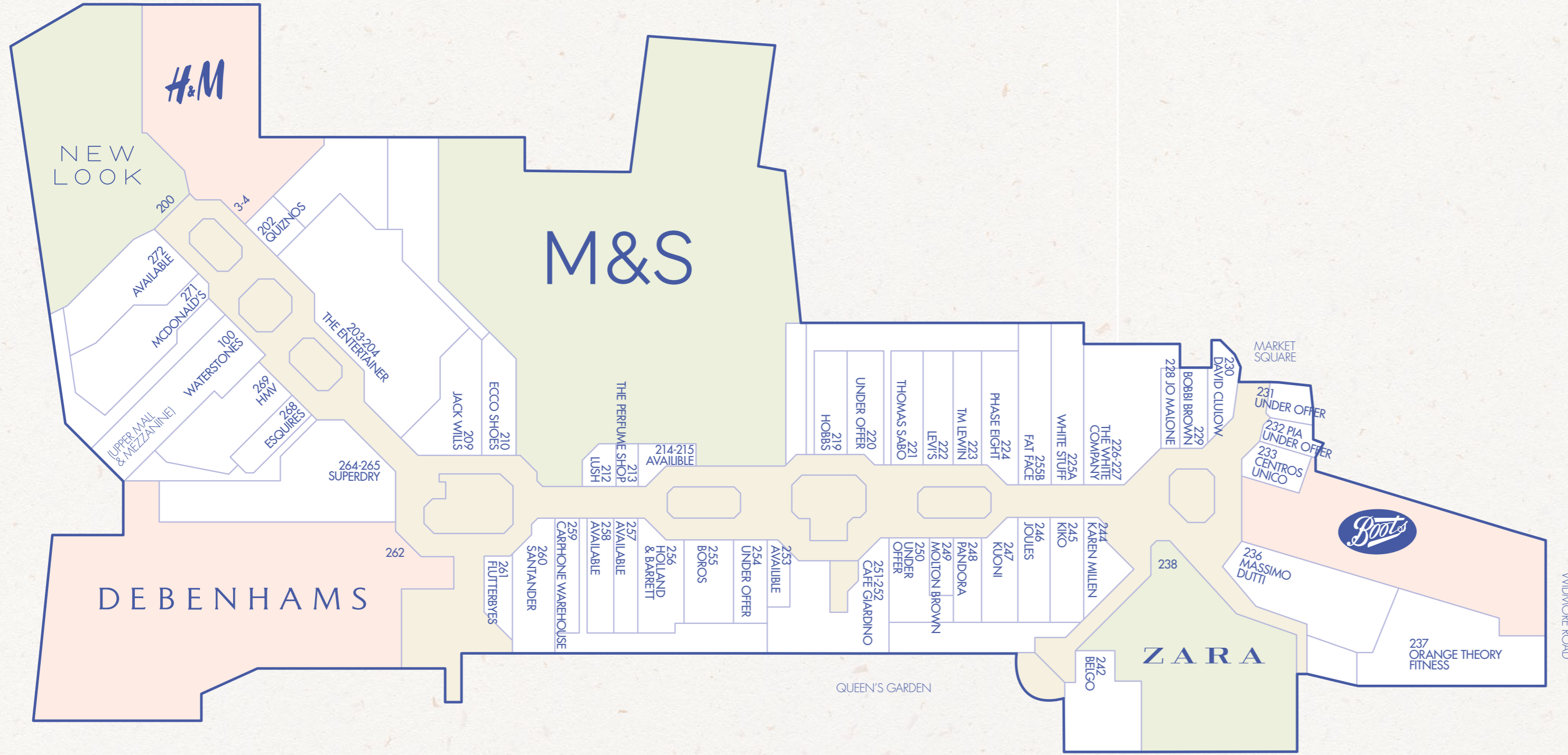
76

minutes dwell time





LOWER MALL



UPPER MALL

RESTAURANTS & LEISURE



JAMES MERRETT
020 7152 5082
james.merrett@cushwake.com

EMMA WILLIAMS
020 7152 5187
emma.williams@cushwake.com

KATE SADLER (CATERING)
020 7152 5034
kate.sadler@cushwake.com



STUART WHITE
020 7478 4950
stuartw@lunson-mitchenall.co.uk

NATALIE MYLROIE
020 7478 4983
nataliem@lunson-mitchenall.co.uk

GEORGE SAUNDERS
020 3713 5844
georges@lunson-mitchenall.co.uk

GEORGE OPPENHEIM (CATERING)
020 7478 4968
georgeo@lunson-mitchenall.co.uk



Misrepresentation Act
Cushman & Wakefield and Lunson Mitchenall gives notice that these particulars are set out as a general outline only for the guidance of intending Purchasers or Lessees and do not constitute any part of an offer or contract. Details are given without any responsibility and any intending Purchasers, Lessees or Third Party should not rely on them as statements or representations of fact, but must satisfy themselves by inspection or otherwise as to the correctness of each of them. No person in the employment of Cushman & Wakefield or Lunson Mitchenall has any authority to make any representation or warranty whatsoever in relation to this property. December 2017.

THEGLADES.CO.UK