

GROUND FLOOR





## 2,698 SF Class E Office and Medical Space

### Property Highlights

- Space is offered to the market by way of assignment
- Accommodation currently fitted as Medical & Offices
- Lease expires June 2025
- Rent available on request

### Area Amenities

- Situated on Eastern Road, 3 mins walk from Romford Train Station (0.1m)
- Prominent office location to suit most businesses



For more information, please contact:

**Evi Georgadidis**  
Senior Surveyor  
+44 (0) 7990 564 747  
[evi.georgadidis@cushwake.com](mailto:evi.georgadidis@cushwake.com)

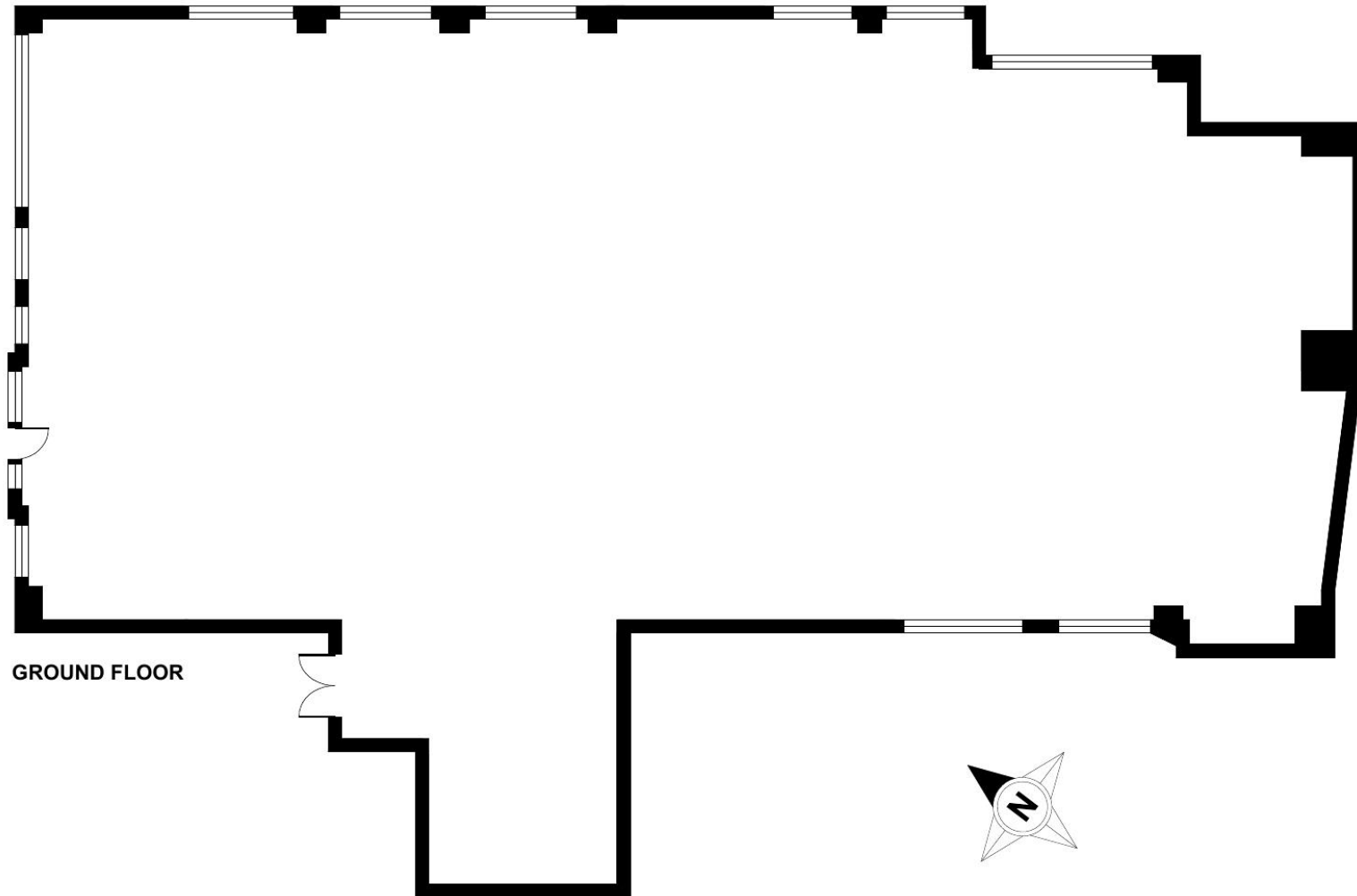
**Zack Berman**  
Head of Office and Mixed-Use Agency  
+44 (0) 7973 387 692  
[z.berman@glenny.com](mailto:z.berman@glenny.com)



**Evi Georgadidis**  
Senior Surveyor  
+44 (0) 7990 564 747  
[evi.georgadidis@cushwake.com](mailto:evi.georgadidis@cushwake.com)

**Zack Berman**  
Head of Office and Mixed-Use Agency  
+44 (0) 7973 387 692  
[z.berman@glenny.com](mailto:z.berman@glenny.com)

**Floor Plan**



### Location Map

