



# DAVIES STREET

M A Y F A I R

12,203 sq ft available within this landmark  
address in the heart of Mayfair

# Prominent & Stylish

15 Davies Street is an exquisite building, in an extraordinary location providing beautiful workspace set across two floors measuring 12,203 sq ft.

Coming Soon.



Self contained entrance

External view looking North  
up Davies Street



2nd floor indicative fit-out CGI, view towards Berkeley Square

# Highlights



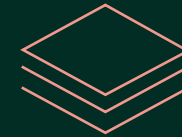
---

Modernised lift with touch screen controls



---

New LED lighting throughout



---

Raised floors



---

Terrace



---

New 4 pipe VRV AC system



---

Cycle store with showers and lockers



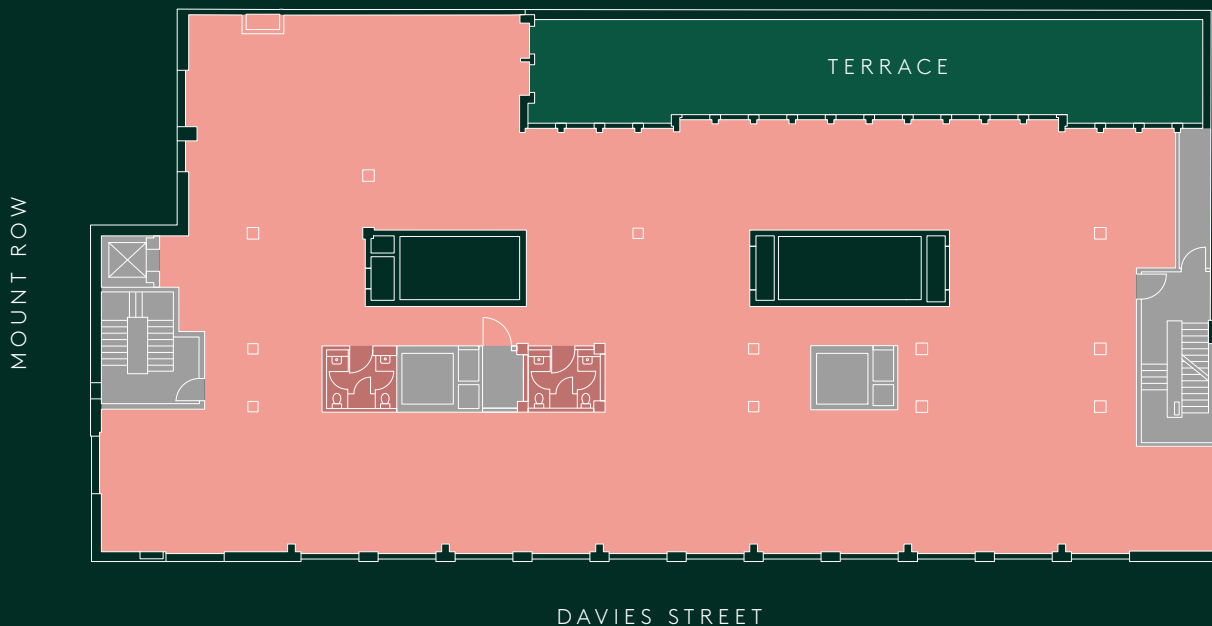
2nd floor CAT A CGI, view  
towards Berkeley Square



1st floor CAT A CGI, view  
of roof terrace

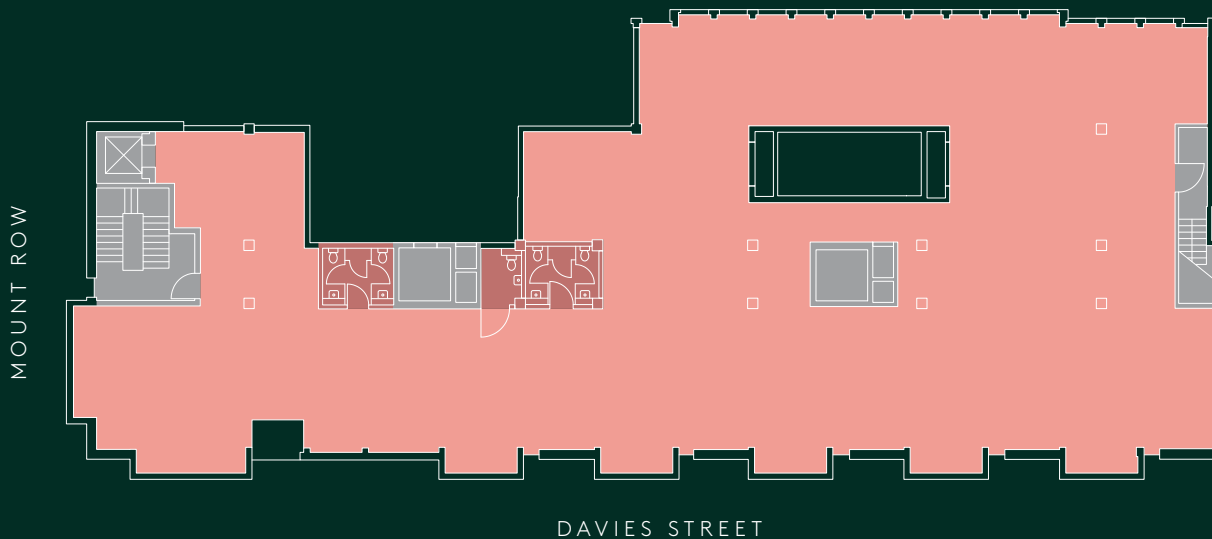
# 1st floor

6,663 sq ft / 619 sq m



# 2nd floor

5,540 sq ft / 515 sq m

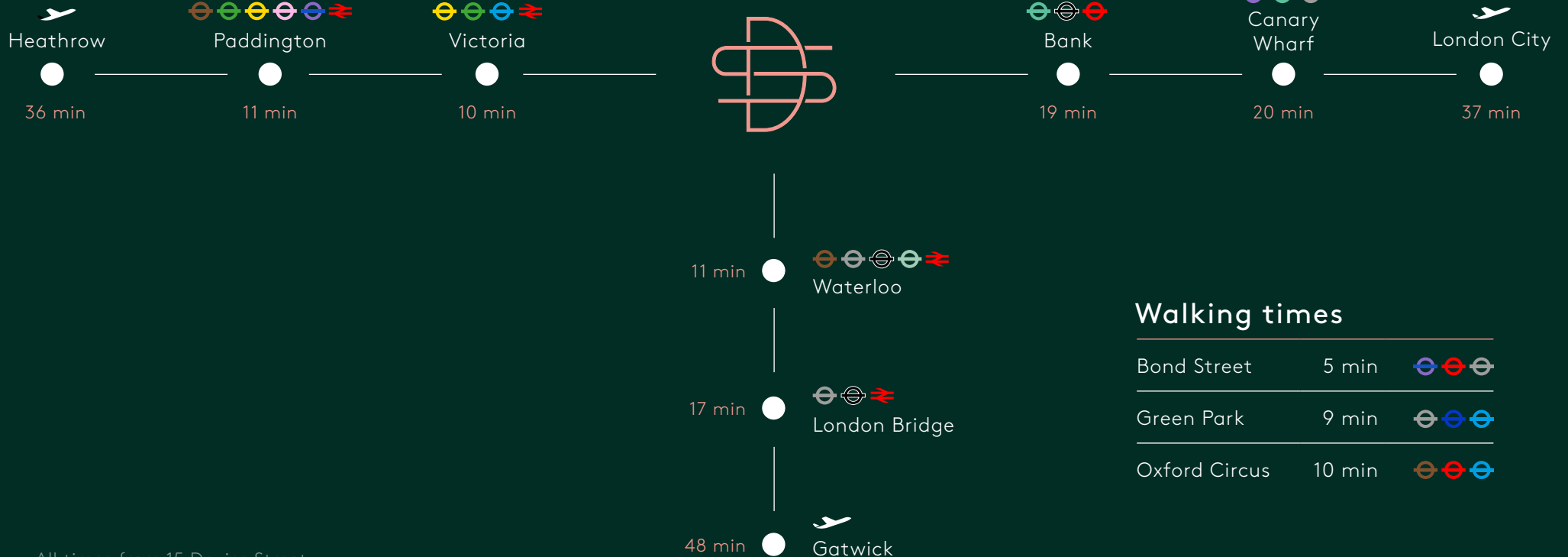







1st floor indicative fit-out CGI, view of roof terrace

# Well Connected

With Bond Street station just a 5 minute walk and Green Park 9 minutes, the building is well connected to the city's main arterial routes such as the Elizabeth, Central and Jubilee lines.



## Walking times

|               |        |   |
|---------------|--------|---|
| Bond Street   | 5 min  |  |
| Green Park    | 9 min  |  |
| Oxford Circus | 10 min |  |

All times from 15 Davies Street  
Source: Google Maps



# Elegant Mayfair

The building is surrounded by Berkeley Square, Mount Street and New Bond Street, benefiting from numerous high-end retailers, restaurants, hotels and members clubs. Transport links are also excellent with the Elizabeth Line and various underground lines moments away.



Restaurants

- 1 34 Mayfair
- 2 Amazónico
- 3 Bacchanalia
- 4 Bocconcino
- 5 China Tang
- 6 Hakkasan
- 7 Kai Mayfair
- 8 KOYN
- 9 LPM
- 10 Mercato Mayfair
- 11 Scott's
- 12 Sexy Fish
- 13 Sketch
- 14 The MAINE
- 15 The Wolseley
- 16 Umu

Hotels

- 20 Claridge's
- 21 The Beaumont
- 22 The Chesterfield
- 23 The Connaught
- 24 The Dorchester
- 25 The May Fair
- 26 The Ritz

Retail

- 27 CHANEL
- 28 Goyard
- 29 Hermès
- 30 Liberty
- 31 Louis Vuitton
- 32 Oscar de la Renta
- 33 Selfridges

Members Clubs

- 17 Annabel's
- 18 The Arts Club
- 19 The Lansdowne

Cafés

- 34 Café Biltmore
- 35 LALÏ
- 36 Queens of Mayfair
- 37 The Gentlemen Baristas



15  W1

# DAVIES STREET

M A Y F A I R

## Contact



---

**Tom Tregoning**  
tom.tregoning@colliers.com  
07765 258526

---

**Justyn Bailey**  
justyn.bailey@baileywatkins.co.uk  
07545 811343

---

**Hector Macneal**  
hector.macneal@cushwake.com  
0788 520 1163

**Tash Atkinson**  
tash.atkinson@colliers.com  
07936 338767

**Andy Tyler**  
andy.tyler@cushwake.com  
07973 836236

Subject to Contract. Important notice relating to the Misrepresentation Act 1967: (i) the particulars are set out as a general outline only for guidance of intending purchasers or lessees and do not constitute, nor constitute part of, an offer or contract (ii) all descriptions, dimensions, references to condition and necessary permission for use and occupation, and other details are given in good faith and are believed to be correct, but any intending purchasers or occupiers should not rely on them as statements or representations of fact, but must satisfy themselves by inspection or otherwise as to the correctness of each of them. February 2024