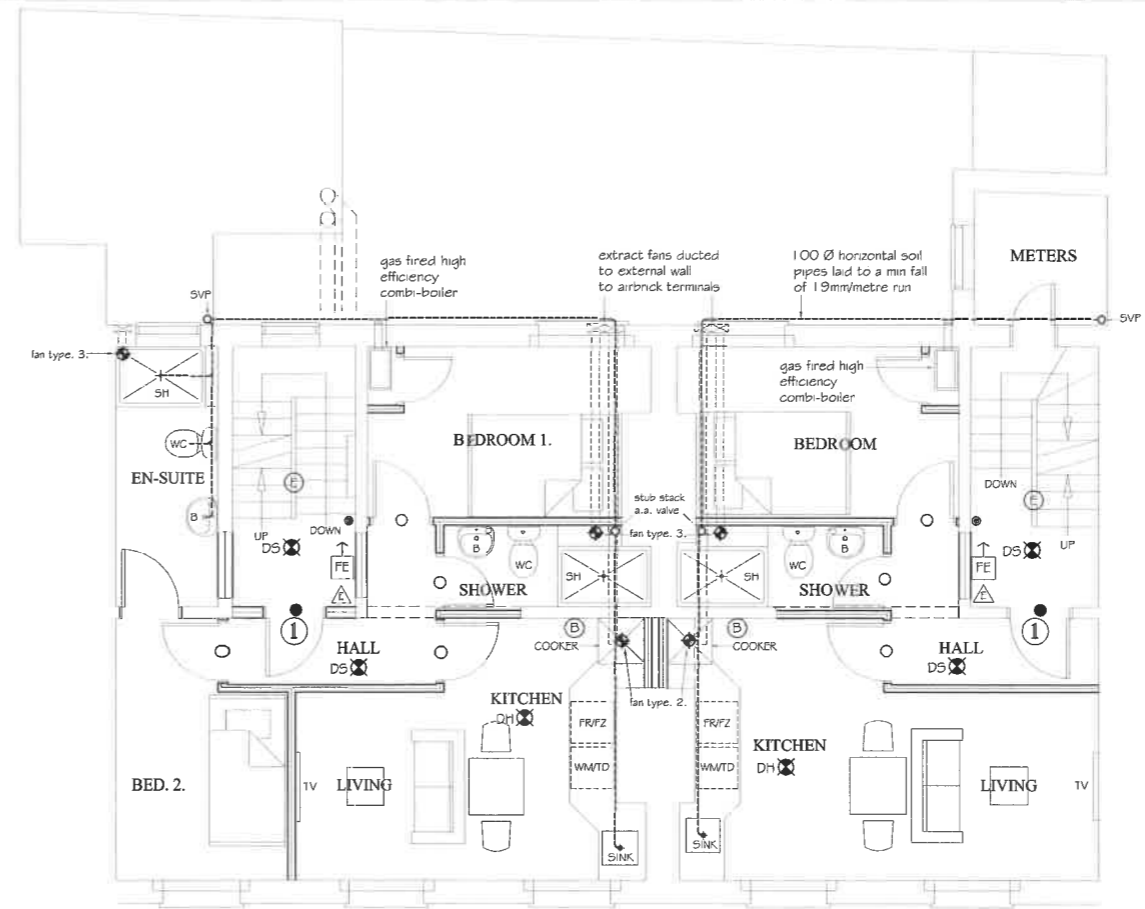
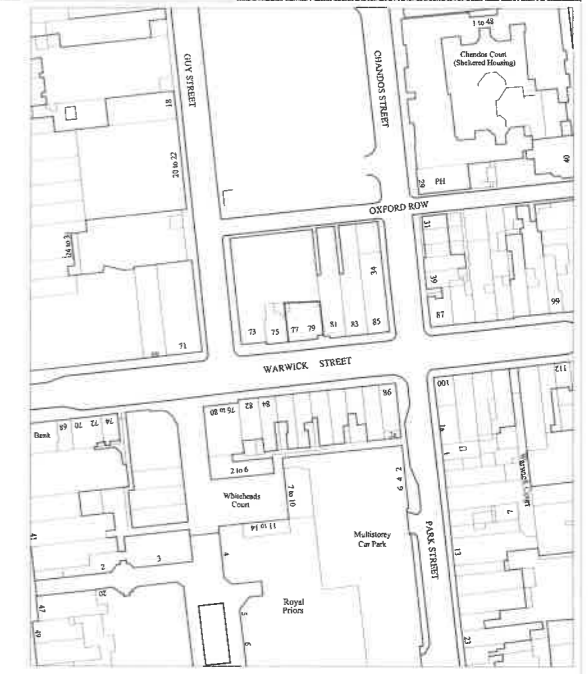


- 30 minute fire resistant door with 20N max. force, low friction, delayed action closing device (Dorguard or similar approved) 38 x 13 door frame rebates fitted with intumescent strips and smoke seals
- 30 minute fire resistant door with delayed action closing device (Dorguard or similar) 38 x 13 door frame rebates fitted with intumescent strips and smoke seals
- VP - door fitted with 6mm Georgian wired cast vision panel with zone of visibility between 900 - 1500 above finished floor level; intumescent compound between glazing and 25 x 25 h.w. beads
- PB - door fitted with panic bolt with "Push Bar To Open" notice in 75mm white lettering on a green background
- all doors on exit routes fitted with cylinder rim locks; doors to be capable of being opened without the use of a key
- Ⓢ - fire alarm call point of the break glass release button type to BS. 5839: Part 1
- 🔊 - fire alarm audible device;
- 🔥 - heat detector to BS. 5839
- 🌫 - smoke detector to BS. 5839
- FE - 90mm high pictogram "FIRE EXIT" symbol positioned above door to BS. 5449 : 1996.
- ←FE - as above with directional indicator
- ▽ - 13A/13B multi purpose fire extinguisher
- ▽₉ - fire extinguisher - 9 litre water type
- ▽₃ - fire extinguisher - 3 litre foam type
- ▽_{4,5} - fire extinguisher - 4.5kg dry powder type
- ▽₂ - fire extinguisher - 2kg carbon dioxide type
- fire extinguishers hung on wall brackets with base of carrying handle 1000 above floor level
- Ⓟ - 1000 x 1000 fire blanket quick-release container hung on wall brackets with base of carrying handle 1500 above floor level
- Ⓛ - three hour non-maintained emergency lighting luminaire to BS. 5266, Part. 1. 1988
- Ⓛ - three hour non-maintained external emergency lighting luminaire to BS. 5266 Part. 1. 1988
- all internal and external escape routes provided with primary lighting circuits to assist in means of escape; lighting to be kept on at all times premises are used and during hours of darkness
- N1 - General Fire Notice to BS. 5449 : 1996
- N2 - Staff Fire Notice to BS. 5449 : 1996
- NG - "Fire Door Keep Shut" notice in 5mm white letters on a blue background to BS. 5449 : 1996



FIRST FLOOR PLAN

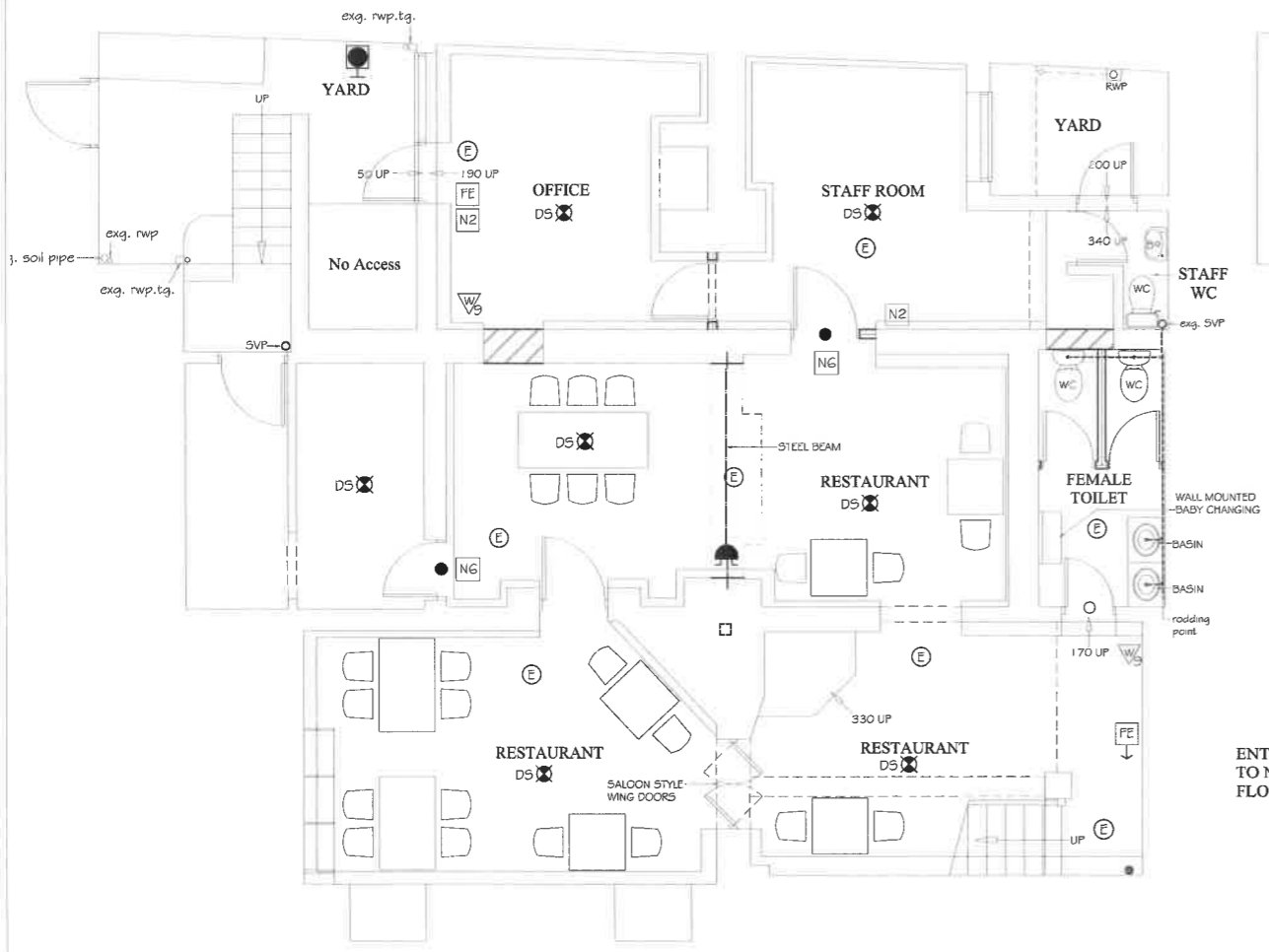


LOCATION PLAN - 1 : 1250

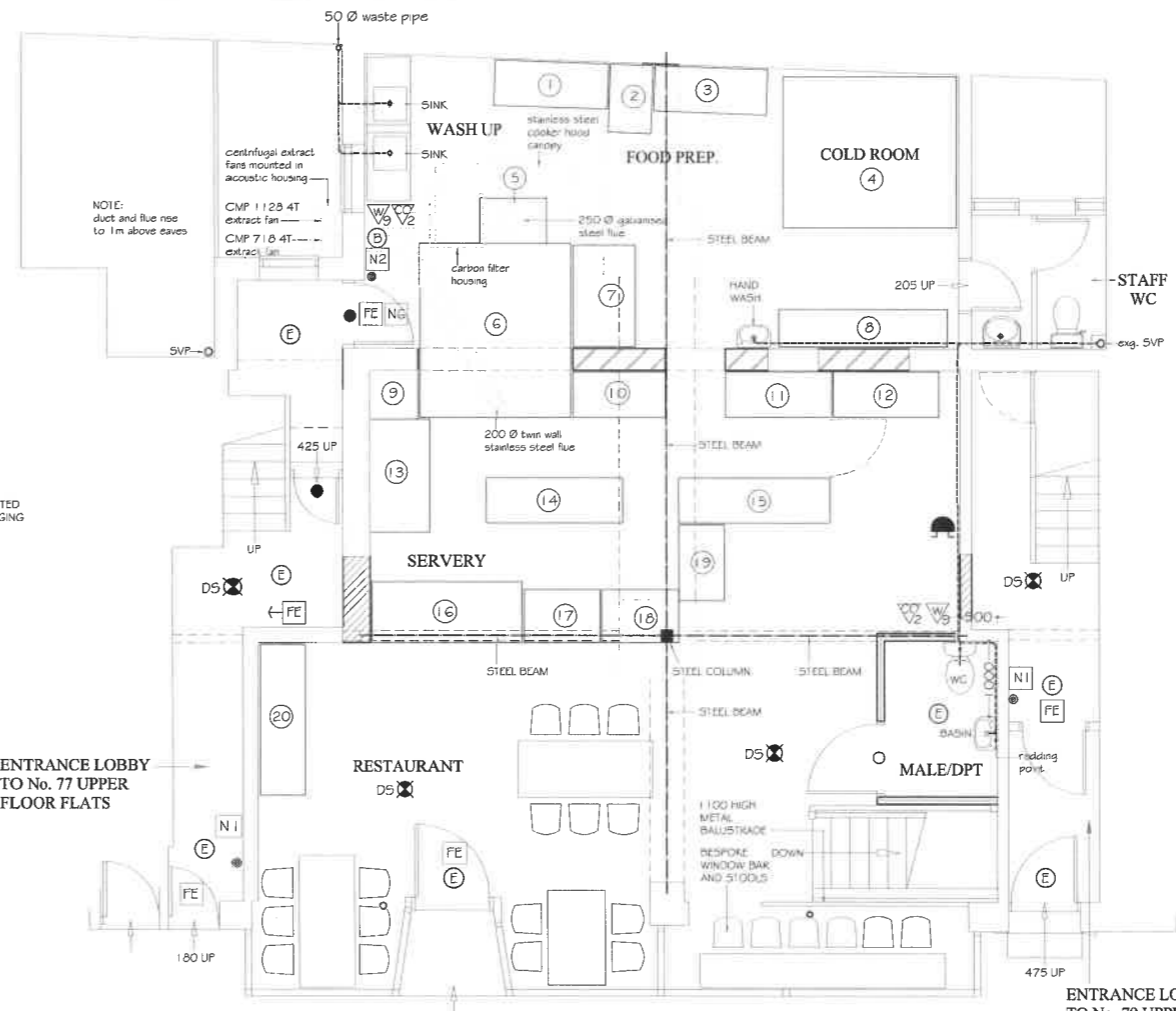
SCHEDULE OF FITTINGS

1. PREP. TABLE
2. SPIRAL DOUGH MIXER
3. PREP. TABLE
4. COLD ROOM (2.3 x 2m)
5. GAS HOB
6. STONE OVEN
7. FREEZER
8. STORAGE RACKS
9. BUILT-IN WALL STORE
10. BACK COUNTER / BOX STORAGE
11. BOTTLE CHILLER / COFFEE MACHINE
12. CONDIMENT STATION / RECYCLE BIN
13. DOUGH STATION
14. ISLAND UNIT / PIZZA COUNTER
15. TILL STATIONS x 2
16. PIZZA COUNTER
17. SALAD BAR
18. SALAD BAR
19. AMBIENT DESSERT DISPLAY
20. MULTIDECK FRIDGE

REV. B. (5.12.2015)
 - restaurant toilets amended; en-suite handed;
 boiler cupboards added
 REV. A. - kitchen extract details added (28. 9. 14)



BASEMENT



GROUND FLOOR PLAN

GARRY M SUCH
 ARCHITECTURAL SERVICES
 'HINTON COTTAGE', ASHORNE, WARWICK,
 WARWICKSHIRE CV35 9DR
 Tel: 01926-651193 Mobile: 07939-441419
 E-Mail: garry@gmsarchitecture.co.uk
 WEB: www.gmsarchitecture.co.uk

DO NOT SCALE FROM THIS DRAWING
 VERIFY ALL DIMENSIONS ON SITE, PRIOR TO COMMENCEMENT OF WORK
 DRAWING FOR THE PURPOSES OF PLANNING & BUILDING REGULATIONS ONLY

JOB TITLE: PROPOSED ALTERATIONS
 77-79 WARWICK STREET,
 LEAMINGTON SPA

DRAWING: BASEMENT, GROUND & FIRST FLOOR PLANS
 & LOCATION PLAN - PROPOSED

SCALE: 1 : 50 1 : 1250
 DATE: JULY 2014

DRWG. No.
03B