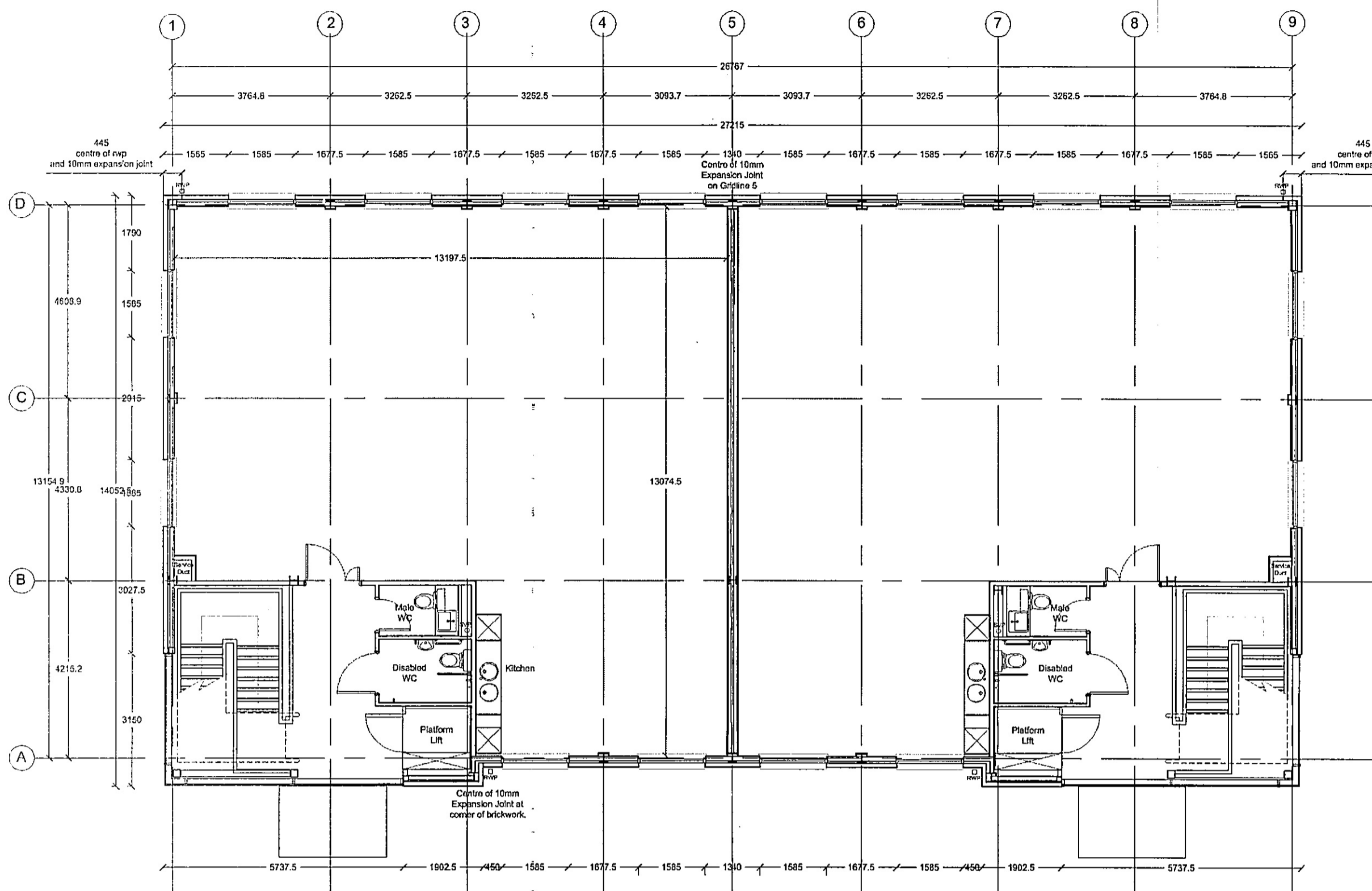
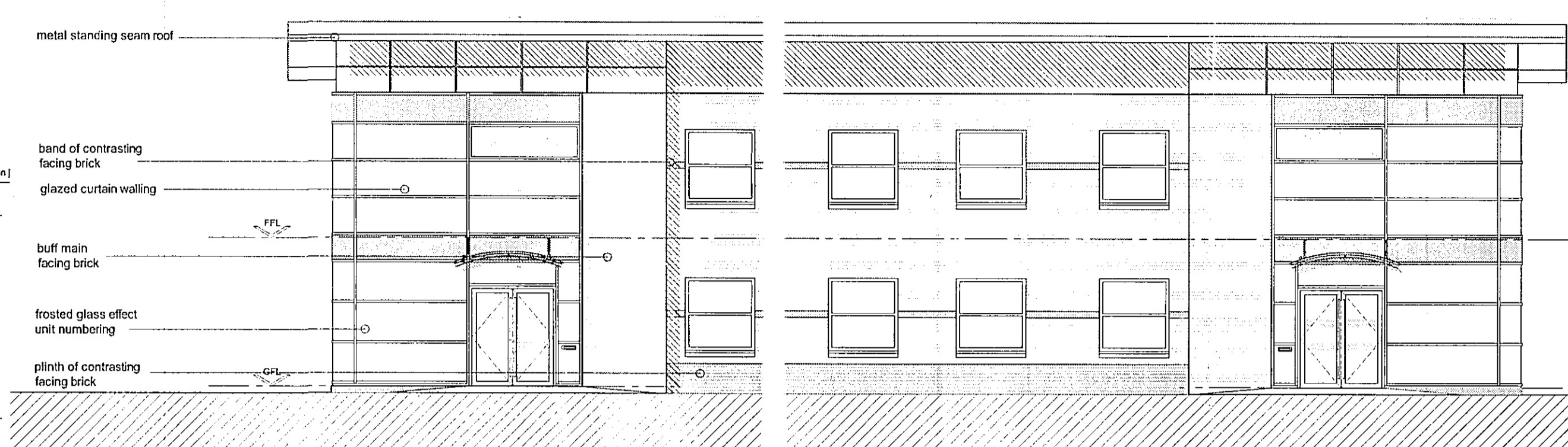


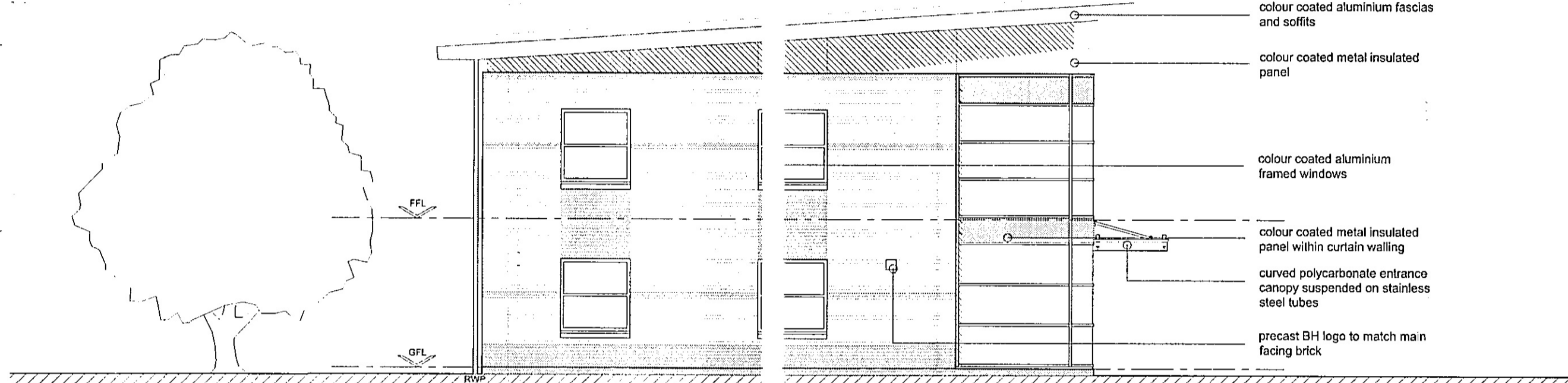
Notes  
 We certify that this is one/a true copy of the drawings referred to in the Planning Application submitted by BHSE General Partner Ltd. to erect 27, 849 sqft (net) of Class 4 offices Arlington Business Park Stevenage.  
 Signed...  
 Date... 29.09.05



FIRST FLOOR PLAN



FRONT ELEVATION

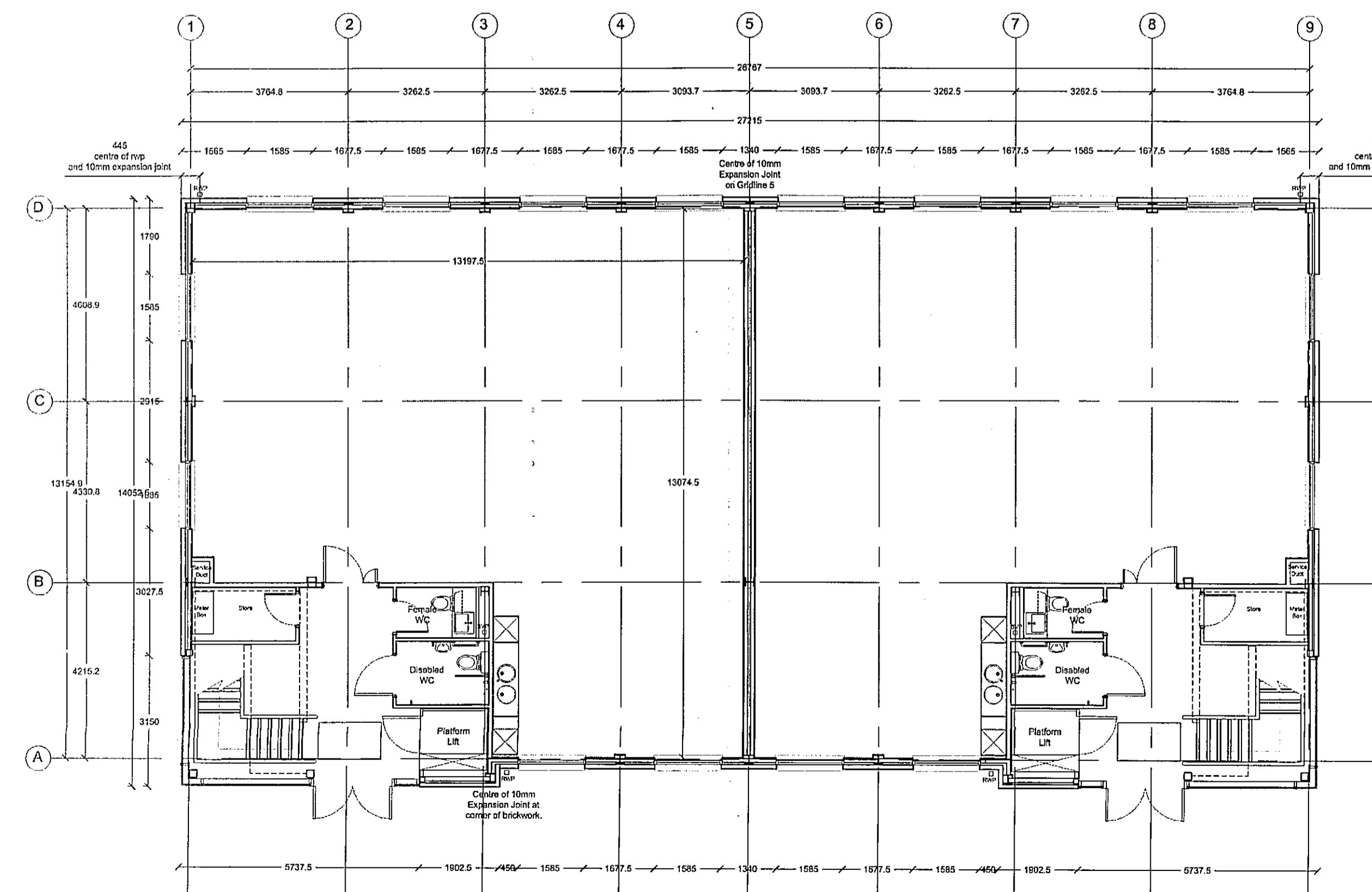


SIDE ELEVATION

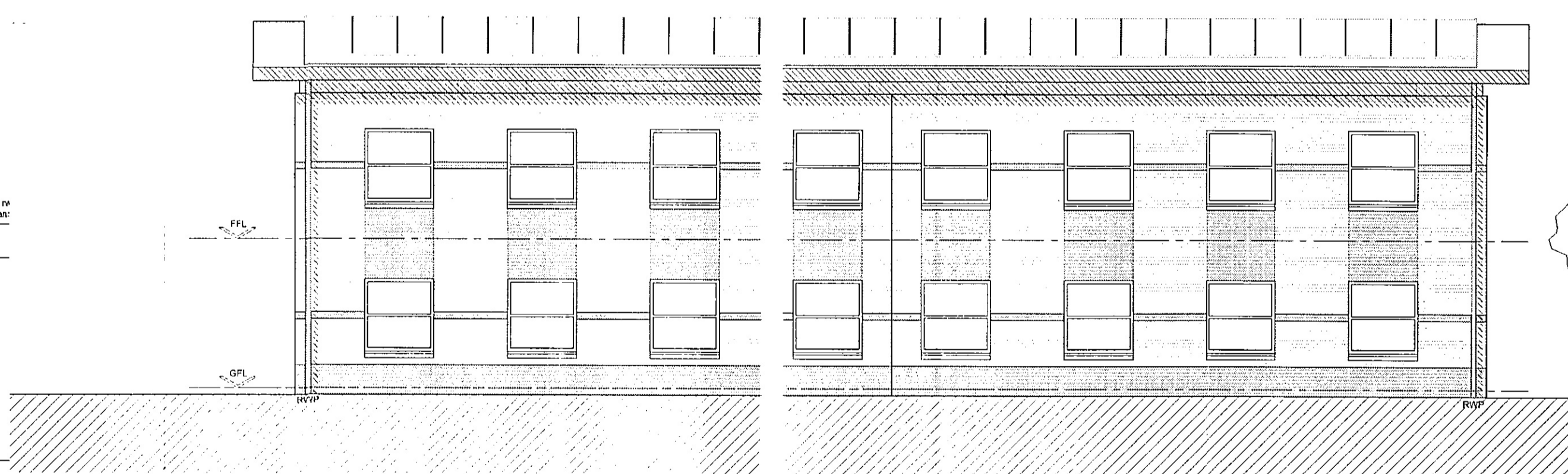
**EXTERNAL FINISHES**  
**ROOF**  
 Warm mono-pitch roof construction: secret fixed built up standing seam system, complete with all flashings, aluminium mill finish. Galvanised steel fascia, powder coated, colour: BS4800 Ref:00A05 Galvanised steel soffit, powder coated, colour: BS00E55  
**WATER DISPOSAL**  
 Hidden galvanised steel lined insulated gutter. Galvanised steel downpipes with all brackets, fittings to match. To be complete with weir overflows and grating for all downpipes. Downpipes to be square section (100mm), PVF2 colour coated with sealed joints and performed sealed access plates 300mm above ground level. Colour: BS4800 Ref:00A05  
**WALL FINISHES**  
 Composite cladding panel system, Colour PVF2 Silver above top of brickwork, all fixed back to secondary steel work. Masonry outer leaf: 102.5mm good quality facing brickwork, colour: buff with mortar to match, with contrasting 102.5mm facing brick plinth and feature bands, colour: dark to be approved by client - both to BS 3921 (1985), designation of durability: FL with a comprehensive strength >40N/mm<sup>2</sup> and a water absorption <5%. Brickwork built stretcher bond and pointed to a neat bucket handle finish. Precast concrete sills and logo block, colour buff to match main facing brick.  
**WINDOWS**  
 Powder coated, thermally broken aluminium framed, factory sealed, clear float, double glazed units with top hung opening lights to comply with BS6375 Parts 1 & 2 and to withstand an exposure rating of 2000. Glazed units manufactured to BS 5713 (20mm air gap with K glazing). Windows to be complete with lockable handles, flashings, cills, seals etc and trickle vents. Ironmongery to match frame colour. Colour: BS4800 Ref:00A05  
**CURTAIN WALLING**  
 Powder coated, thermally broken aluminium frames to comply with BS6375 Parts 1 & 2 and to withstand an exposure rating of 2000. Colour: BS4800 Ref:00A05. Opening light to be incorporated. Toughened glass to be provided where within 800mm of finished floor level. Powder coated steel infill panels integral to curtain walling over all ceiling / structural zones, colour to match frames.  
**EXTERNAL DOORS**  
 Main entrance doors to be provided integral to curtain walling system. Colour coated, aluminium framed, with toughened glazing. Colour: BS4800 Ref:00A05. Doors to be fully weatherstripped and complete with concealed closers. Feature pull handles to be satin stainless steel.  
**LETTERPLATE**  
 Stainless steel letterplate fitted through glazing adjacent to entrance doors, complete with inside tidy and gaskets.  
**UNIT NUMBERING**  
 Self-adhesive 'treated effect' vinyl unit numbering applied to internal face of glazing adjacent to entrance.  
**ENTRANCE CANOPY**  
 Circular section stainless steel frame cantilevered over main entrance doors with suspended polycarbonate sheet to extend beyond entrance doors.

SCHEDULE OF APPROXIMATE INTERNAL FLOOR AREAS

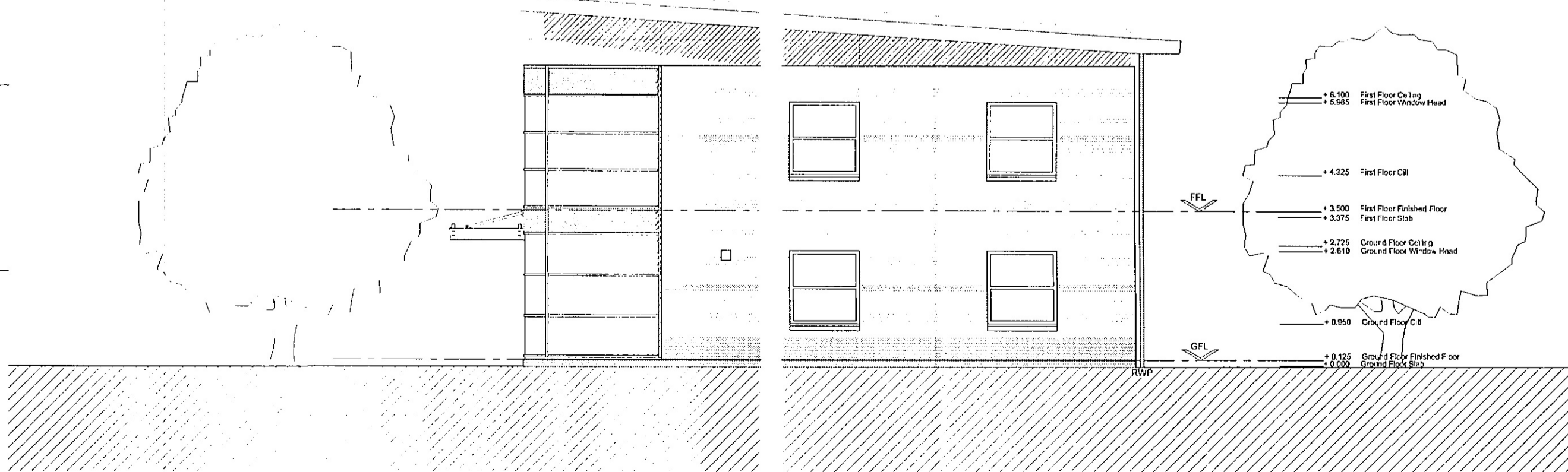
	MINIMUM NET sqft (sq m)	TARGET NET sqft (sq m)	GROSS sqft (sq m)
GROUND FLOOR	1488 / (131)	1528.5 / (142)	1878.5 / (174.5)
TOTAL	2996 / (278)	3057 / (284)	3757 / (349)



GROUND FLOOR PLAN



REAR ELEVATION



SIDE ELEVATION

**PLANNING**  
 Project BUSINESS HOMES ARLINGTON BUSINESS PARK STEVENAGE  
 Drawing BUILDINGS 1 & 2 3000 SQFT UNIT PLANS & ELEVATIONS @A1 Scale 1:100  
 Ref: STEVENAGE BOROUGH COUNCIL Date  
 TOWN & COURT ACT 1990 PLAN REFERRED TO IN TOWN & COURT ACT 1990  
 DATE 25/10/05  
 PLAN No. 05/00428  
 DATE 20 SEP 2005  
**3D**  
 Architecture & Design  
 3D Architects  
 144 St Vincent Street  
 Glasgow G2 5LQ  
 Telephone: 0141 226 3030  
 Facsimile: 0141 226 3053  
 arch@glas.3dgroup.co.uk  
 No. AR.G / 05109 (2)-02 Rev