

# JOHN PAYNE COMMERCIAL

SALES | LETTINGS | LAND | INVESTMENTS

**FOR SALE FREEHOLD**

**BLACKHEATH VILLAGE**

**OPPORTUNITY TO ACQUIRE A PLOT OF LAND**

**SITE AREA APPROXIMATELY 21.4MSQ (230FTSQ)**

**LAPSED PLANNING FOR SINGLE STOREY OFFICE**

**POTENTIAL FOR ALTERNATIVE USES**



**NELSONS ARCH, BRIGADE STREET, BLACKHEATH,  
SE3 0TW**

**GUIDE PRICE £115,000**

Commercial Property Agents & Surveyors

7 Hare & Billet Road, Blackheath, London SE3 0RB Tel: 020 8852 6125 Email: Commercial@johnpaynecommercial.com

[www.johnpaynecommercial.com](http://www.johnpaynecommercial.com)

These particulars are believed to be correct, but their accuracy is not guaranteed and they do not constitute an offer or form part of any contract. John Payne Commercial and its employees have no authority to make any representation or give any warranty in relation to this property.

<b>Location:</b>	<p>The property is located in the heart of Blackheath Village a residential suburb in South-East London within two London boroughs being Royal Greenwich and Lewisham. Brigade Street is an attractive narrow cobbled street now adopted by the Local Authority.</p> <p>The Heath still dominates but the village is the main commercial centre of Blackheath retaining its village appeal with most of the retail uses local in nature and comprising not only an eclectic mix of retails shops but also a large contingent of restaurants and cafes.</p> <p>The nearest railway station is Blackheath which is just a short walk away providing fast and frequent services into London Charing Cross, Cannon Street and Victoria.</p>
<b>Description:</b>	The subject site is within the Blackheath Conservation Area and is a rectangular plot having a total area of approximately 21.42 sq m (230 sq ft) with a lapsed planning consent for a single storey office with kitchen and WC facilities. (London Borough of Lewisham Application No. DC/21/121093)
<b>Planning Authority:</b>	London Borough of Lewisham.
<b>Terms:</b>	Vacant site.
<b>VAT:</b>	N/A
<b>Legal Fees:</b>	Each party to bear their own legal costs.
<b>Viewing:</b>	Strictly via appointment through sole agents JOHN PAYNE COMMERCIAL 020 8852 6125

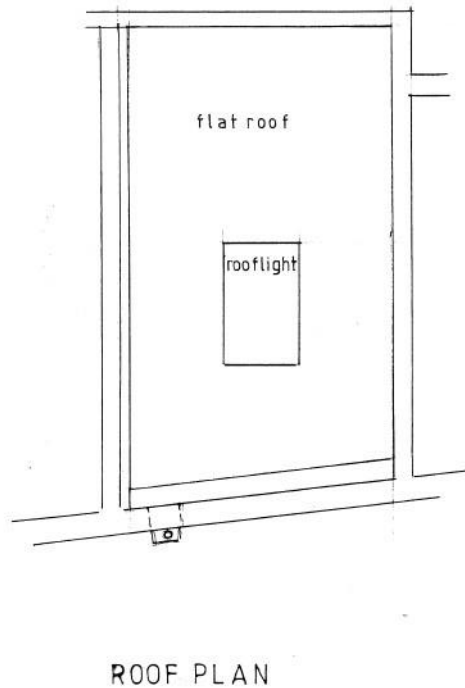
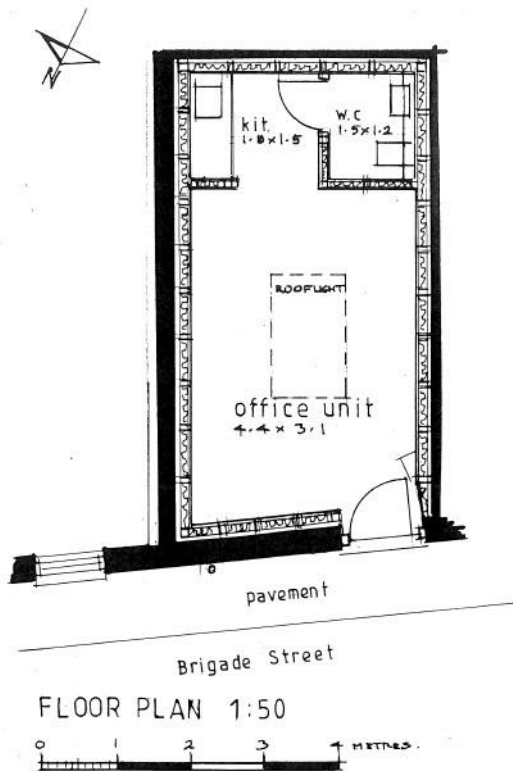
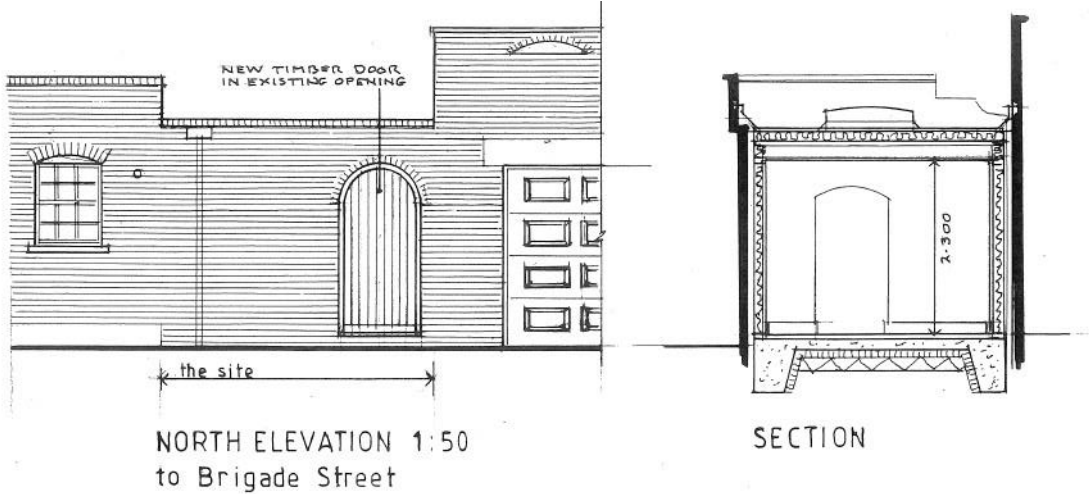
JP/LE/BSNA/C00738

Misdescriptions Act 1991

Whilst every effort has been made to ensure the accuracy of these particulars they are in no way guaranteed and do not and will not constitute any part of a contract or any other form of agreement. No liability shall attach to John Payne Commercial or its representatives in relation to anything stated or omitted from these particulars. All prospective lessees purchasers are invited to and expected to inspect the property to check the accuracy of these particulars and to seek appropriate advice from their surveyor and/or solicitor

# JOHN PAYNE COMMERCIAL

SALES | LETTINGS | LAND | INVESTMENTS



DESIGN PROPOSALS  
PROPOSED OFFICE UNIT;  
NELSONS ARCHWAY,  
BRIGADE STREET, BLACKHEATH.

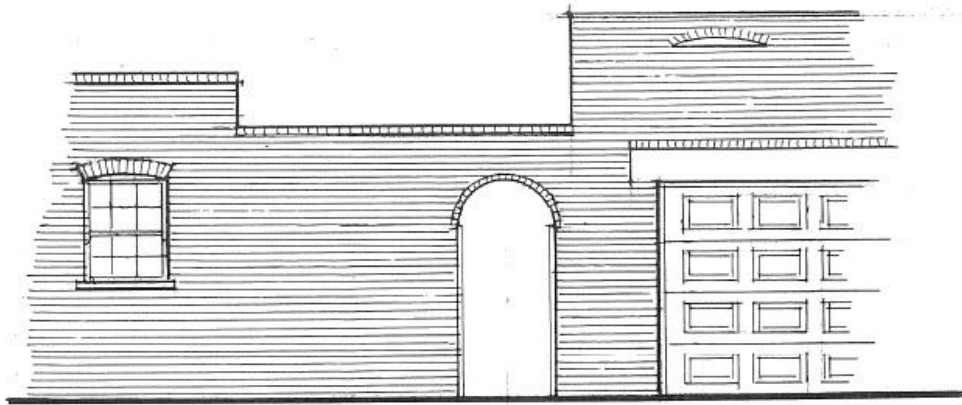
Drq.no. 2027/ 03 Dec. 2020

Commercial Property Agents & Surveyors

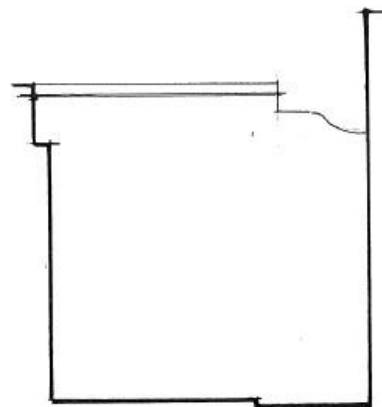
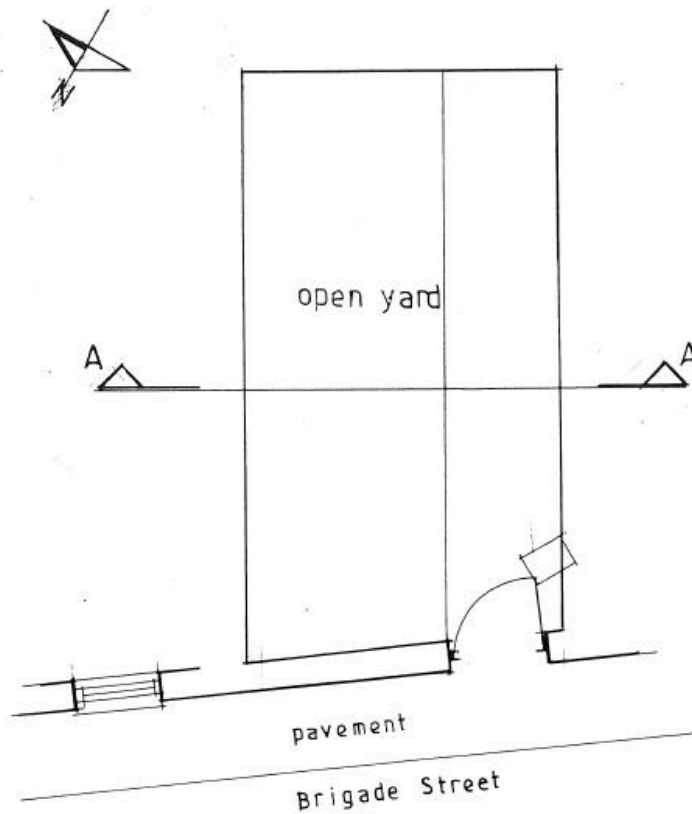
7 Hare & Billet Road, Blackheath, London SE3 0RB Tel: 020 8852 6125 Email: Commercial@johnpaynecommercial.com

[www.johnpaynecommercial.com](http://www.johnpaynecommercial.com)

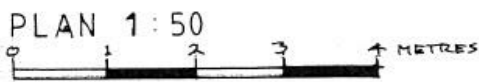
These particulars are believed to be correct, but their accuracy is not guaranteed and they do not constitute an offer or form part of any contract. John Payne Commercial and its employees have no authority to make any representation or give any warranty in relation to this property.



NORTH ELEVATION  
to Brigade Street



SECTION A - A



SURVEY AS EXISTING,  
NELSONS ARCHWAY,  
BRIGADE STREET, BLACKHEATH.  
Drg.no. 2027/01 Nov. 2020

Misdescriptions Act 1991

Whilst every effort has been made to ensure the accuracy of these particulars they are in no way guaranteed and do not and will not constitute any part of a contract or any other form of agreement. No liability shall attach to John Payne Commercial or its representatives in relation to anything stated or omitted from these particulars. All prospective lessees purchasers are invited to and expected to inspect the property to check the accuracy of these particulars and to seek appropriate advice from their surveyor and/or solicitor