



workspace

reframed

FRAMEWORK

124 ST VINCENT STREET  
GLASGOW / G2 5HF





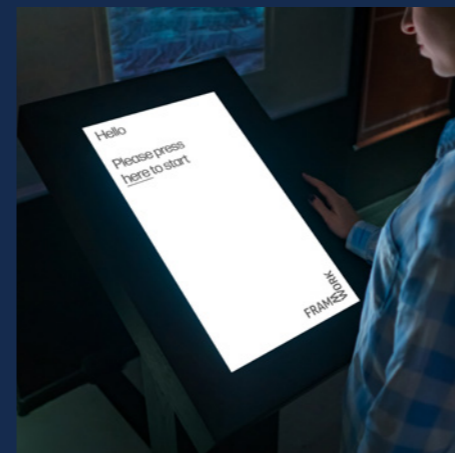
36,460 sq ft of truly contemporary Glasgow city centre workspace offering floors from 2,056 sq ft - 5,430 sq ft

While the impressive stone façade engenders thoughts of 'they don't build them like this anymore' step inside the new entranceway and it's very much all about today and everything you could wish for in terms of a brilliant working environment and inspiring workspace.



## In the Frame

On entering Framework the vibe is immediately apparent. Take a left into the new reception area where high quality stylish finishes and contemporary furniture create a memorable initial impression and an ideal spot to take a break.



FRAMEWORK



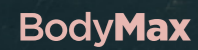




## Workout, Inside.



Framework boasts its very own onsite, fully equipped gym featuring world class equipment from Peloton, Origin Storm and BodyMax.



## Additional Facilities

- > Drying Room
- > Shower + Changing Facilities
- > Secure Basement Car Parking
- > Secure Indoor Cycle Storage
- > Cycle Maintenance Station



## The Green Light

Doing our bit for the environment we're 100% electric from renewable sources and also provide electric car charging stations to reduce carbon emissions.



## Connectivity Matters

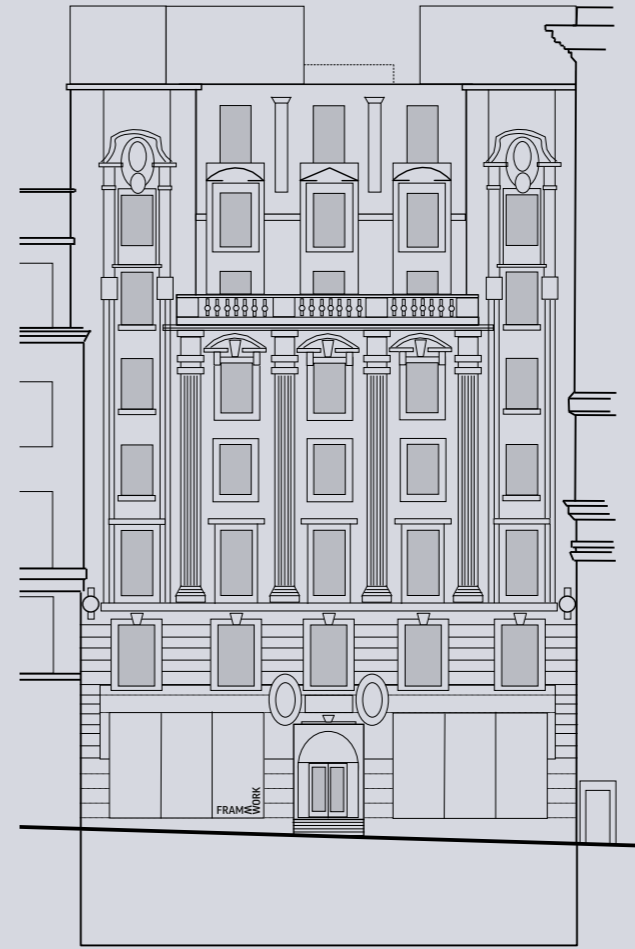
The building is Fibre enabled, ensuring instantaneous, secure high speed broadband is available by all providers from day one.







# Bright Side



Seven - 4,676 Sq Ft

Six - 4,855 Sq Ft

Five - 4,860 Sq Ft

Four - 4,859 Sq Ft

Three - 4,864 Sq Ft

Two - 4,860 Sq Ft

One - 5,430 Sq Ft

Ground - 2,056 Sq Ft

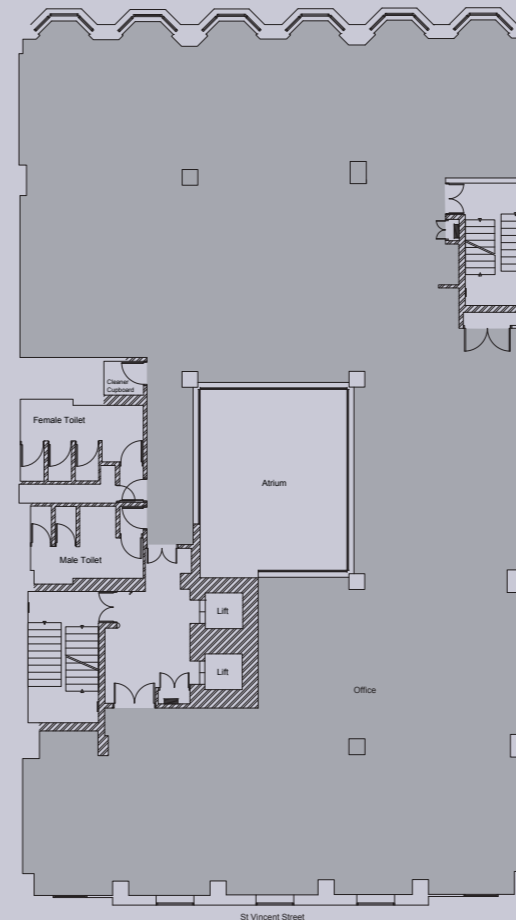
Basement

Total - 36,460 Sq Ft

Floors can split from 2,000 Sq Ft upwards

## Typical Floor

- New entrance & shopfronts <
- New reception & seating area <
- Interactive directory & access control <
- Exposed, painted concrete ceiling <
- VRF Air Conditioning <
- Suspended LED lighting with ceiling rafts <
- Underfloor trunking & floor boxes <
- Contemporary floor coverings <
- Dedicated kitchen <
- Dedicated male and female toilets <
- Wheelchair accessible <
- Secure basement car parking <
- 9 car parking spaces <
- 2 electric car charging spaces <
- EPC - C <
- Electric only, delivered from 100% renewable sources <







A small taste of the world class amenity - all in the Framework neighbourhood.

→ Buchanan Street



Buchanan Street is one of the main shopping thoroughfares in Glasgow, the largest city in Scotland.

→ Social Bite



This bright, colourful and independent sandwich shop and cafe donates all profits to social causes.

→ Topolabamba



Bright bar/restaurant with wood, stone and coloured lamps, for Mexican street food and cocktails.

→ Chaakoo Bombay Kitchen



A melting pot menu of Classic Iranian grill dishes and Classic Bombay dishes.

→ Café Fame



Relaxed coffee shop in an art deco space offering espresso, pastries & light Italian fare.

→ Panko



Small, counter-serve operation offering Japanese street food for quick dining & take-out.

→ Akiko



The newest addition to the city centre's emerging Japanese cuisine scene, Akiko on Bothwell street, will have us all eating clean.

→ Miller & Carter



Miller & Carter put everything into pursuing the perfect steak, from the field to the butcher's block to the grill, so only the finest, most flavoursome cuts make your plate.

→ Tesco



Tesco Express St Vincent Street store - 1 minute walk from Framework.

→ Sainsbury's



Sainsbury's Local Gordon Street store - 3 minute walk from Framework.

→ Gordon Street Coffee



Small batch coffee producer and roastery in Glasgow and Edinburgh who have just received a 2020 Great Taste award, the world's most trusted food and drink awards

→ Pizza Punks



Create your own pizza, selecting as many unlimited toppings as you like, all for one flat fee. No extra costs, no hidden charges, just awesome pizza.

→ All Bar One



Modern chain bar serving beer, cocktails, wine and sharing plates to an after-work crowd.

→ Mezzidakia



A menu of small & shared plates from across the Mediterranean with warm lighting & rustic interiors.

→ Costa



Costa is the Nation's Favourite coffee shop and the largest and fastest growing coffee shop chain in the UK.



Framework's central location means all forms of domestic travel are within easy reach.

Queen Street and Glasgow Central Railway Stations are within a few minutes' walk, while Buchanan Street Subway Station further improves connectivity to the West End and Greater Glasgow.

Glasgow Central to Paisley Gilmour Street (Glasgow Airport)	9 mins
Glasgow Central to Prestwick Airport	40 mins
Queen Street to Edinburgh	42 mins
Queen Street to Aberdeen	2 hrs 37 mins
Glasgow Central to London	4 hrs 30 mins



● Neighbouring Occupiers

- 01 Tilney / QBE
- 02 HBOS
- 03 KPMG / H3G / HMRC
- 04 RBS
- 05 Marton Fraser
- 06 Irwin Mitchell
- 07 HP / Hilton / Beam Suntory / RSA
- 08 Arcadis / Peninsula
- 09 St James Place Wealth
- 10 TLT
- 11 CGI
- 12 Abello
- 13 Cigna Life
- 14 SSE

● Amenities

- 01 Social Bite
- 02 Topolabamba
- 03 Chaakoo
- 04 Vroni's
- 05 Café Fame
- 06 Panko
- 07 Akiko
- 08 Tesco
- 09 Sainsbury's
- 10 Gordon Street Coffee
- 11 Pizza Punks
- 12 All Bar One
- 13 Mezzidakia
- 14 Costa

● Hotels, Car Parks & Nextbike Stations

- 01 O-Park Sauchiehall Street
- 02 Nextbike Station George Square
- 03 NCP Mitchell Street
- 04 O-Park Waterloo Street
- 05 Nextbike Station Waterloo Street
- 06 Kimpton Blythswood Square Hotel
- 07 Malmison Hotel
- 08 Citizen M Hotel
- 09 Grand Central
- 10 Radisson Blu
- 11 Ibis Styles
- 12 Yotel
- 13 Motel 1







**Andy Cunningham**  
andy.cunningham@cbre.com  
07793 808 490

**Hannah Lowe**  
hannah.lowe@cbre.com  
07917 651 872

**Ken McInnes**  
ken.mcInnes@ryden.co.uk  
07747843 479

**Tim Jacobsen**  
tim.jacobsen@ryden.co.uk  
07787 183 341

**CBRE**  
0141 204 7666  
www.cbre.co.uk

**Ryden.co.uk**  
0141 204 3838



## Framework

124 St Vincent Street  
Glasgow / G2 5HF

[frameworkglasgow.com](http://frameworkglasgow.com)



Ryden LLP / CBRE give notice to anyone who may read these particulars as follows: 1. Particulars: These particulars are not an offer or contract, nor part of one. You should not rely on statements by Ryden LLP / CBRE in the particulars or by word of mouth or in writing ("information") as being factually accurate about the property, its condition or its value. Ryden LLP / CBRE has any authority to make any representations about the property, and accordingly any information given is entirely without responsibility on the part of the agents, seller(s) or lessor(s). 2. Photos etc: The photographs show only certain parts of the property as they appeared at the time they were taken. Areas, measurements and distances given are approximate only. 3. Regulations etc: Any reference to alterations to, or use of, any part of the property does not mean that any necessary planning, building regulations or other consent has been obtained. A buyer or lessee must find out by inspection or in other ways that these matters have been properly dealt with and that all information is correct. 4. VAT: The VAT position relating to the property may change without notice. March 2021.