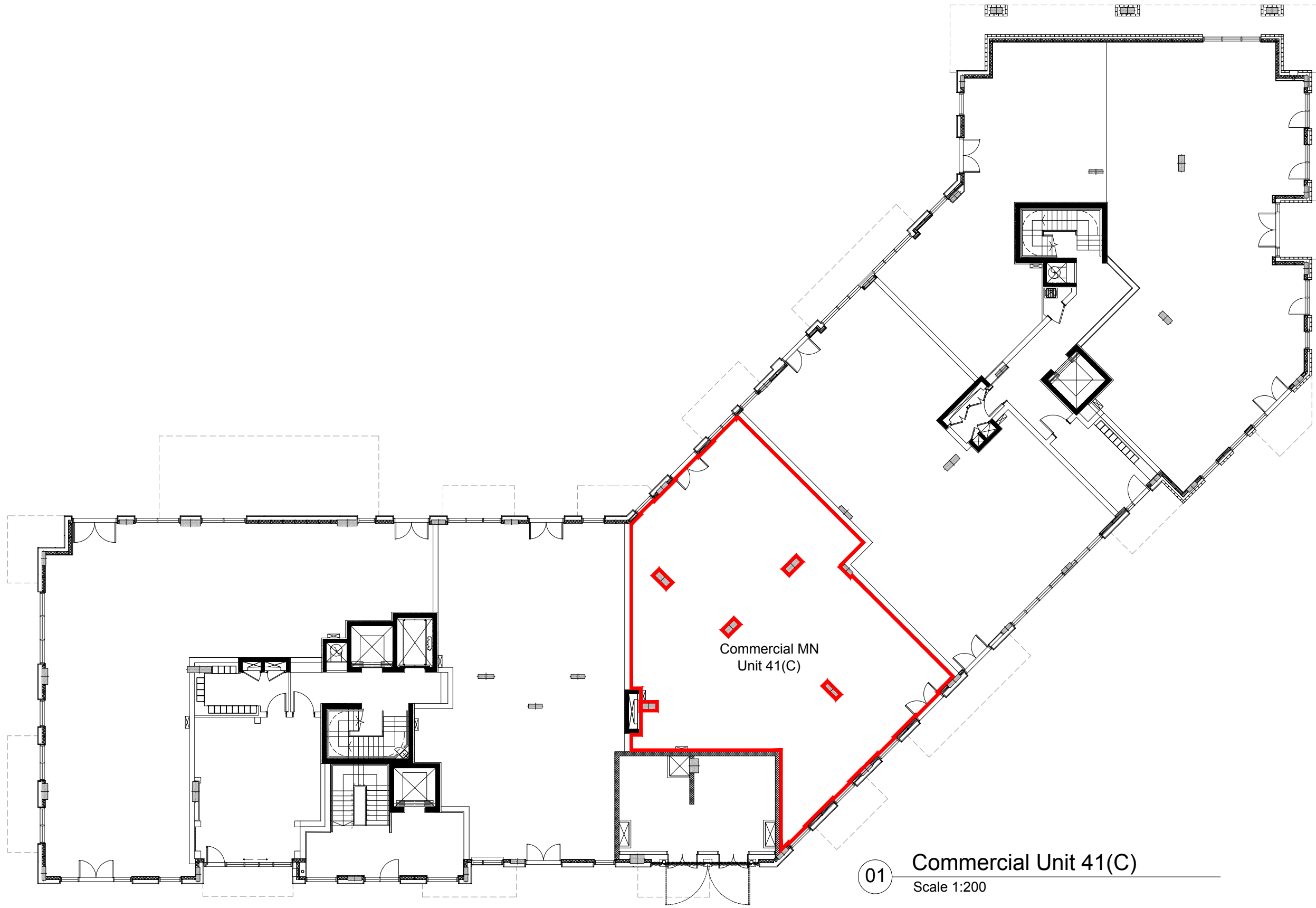
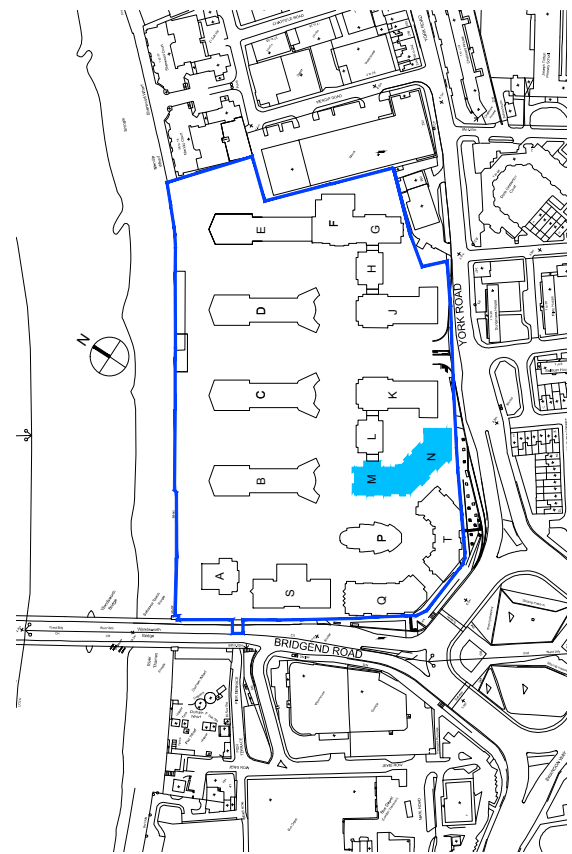


Contractors are not to scale dimensions from this drawing



**01** Commercial Unit 41(C)  
Scale 1:200



**02** Location Plan  
Scale 1:5000

**KEY:**

- █ Estate Demise
- █ Property Demise
- █ Right To Use

Rev	Description	Date	Intl
-	Issued for Information	03.05.18	CD

03.05.2018 Claire Dimitriou U:\30071\Sheets\400-Conveyance\Commercial Units\30071-MN-400.dwg

**BroadwayMalyan<sup>BM</sup>** Architecture Urbanism Design

T: +44 (0)20 7261 4200 F: +44 (0)20 7261 4300 E: Lon@BroadwayMalyan.com  
Riverside House, Southwark Bridge Road, London SE1 9HA

London/Madrid/Lisbon/Warsaw/Abu Dhabi/ Dubai/  
Singapore/Shanghai/Manchester/Birmingham/  
Liverpool/Reading/Weybridge/  
www.BroadwayMalyan.com

Client  
**St. George**  
Project

Battersea Reach - MN  
Description

**Conveyance Plan**  
Commercial Unit 41(C)



**St George**  
Designed for life

St George South London Limited  
St George House | 17-19 Imperial Road | Fulham | SW6 2AN  
Telephone. 020 7471 4444 | Fax. 020 7471 4310

Status  
**For Information**

Scale <b>1:200@A3</b>	Drawn <b>CD</b>	Date <b>May 18</b>
Job number <b>30071</b>	Drawing number <b>MN-400-CU-41(C)</b>	Revision <b>-</b>

Original size 100mm @ A3 Copyright Broadway Malyan Limited