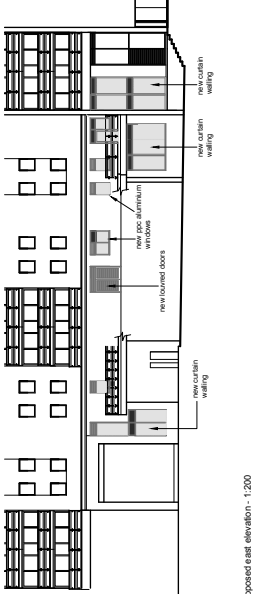
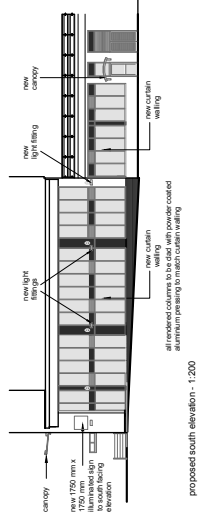


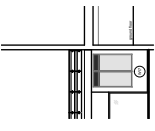
proposed west elevation - 1:200



proposed east elevation - 1:200

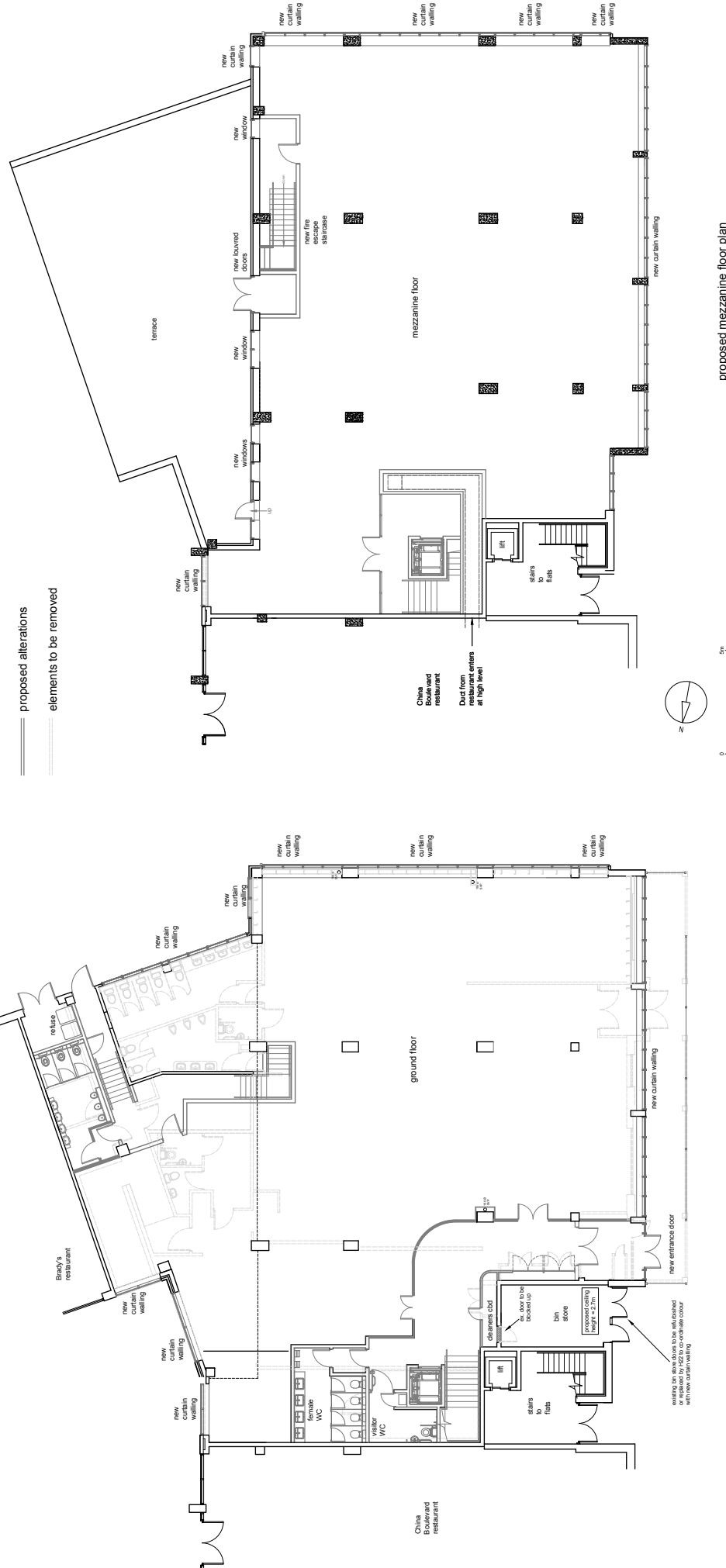


proposed south elevation - 1:200



proposed north elevation - 1:200

proposed alterations
elements to be removed



proposed ground floor plan

proposed mezzanine floor plan

revision	date	description
A	03/11/15	issue for planning and building control, new window cover for doors. Curtain walling added to west elevation
B	27/01/16	alterations and internal layout to ground floor amended
C	03/02/16	north facing elevation added
D	11/02/16	column penetrance added plus notes on sign side

client	H2Z LIMITED	date	21/10/15
property	DOLPHIN HOUSE WANDSWORTH, LONDON	scale	1:200 @ A1
project	CONVERSION TO OFFICES	drawn	MPP
drawn	CONVERSION TO OFFICES	checked	SR
drawn	LICENSE FOR ALTERATIONS PROPOSED PLANS & ELEVATIONS	drawing no.	H22_002-06
		revision	D

iCON Building Consultancy
100 South Street
Bishop's Stortford
Hertfordshire CM23 3BG
Tel: 01279 655389
Web: www.iconbc.co.uk