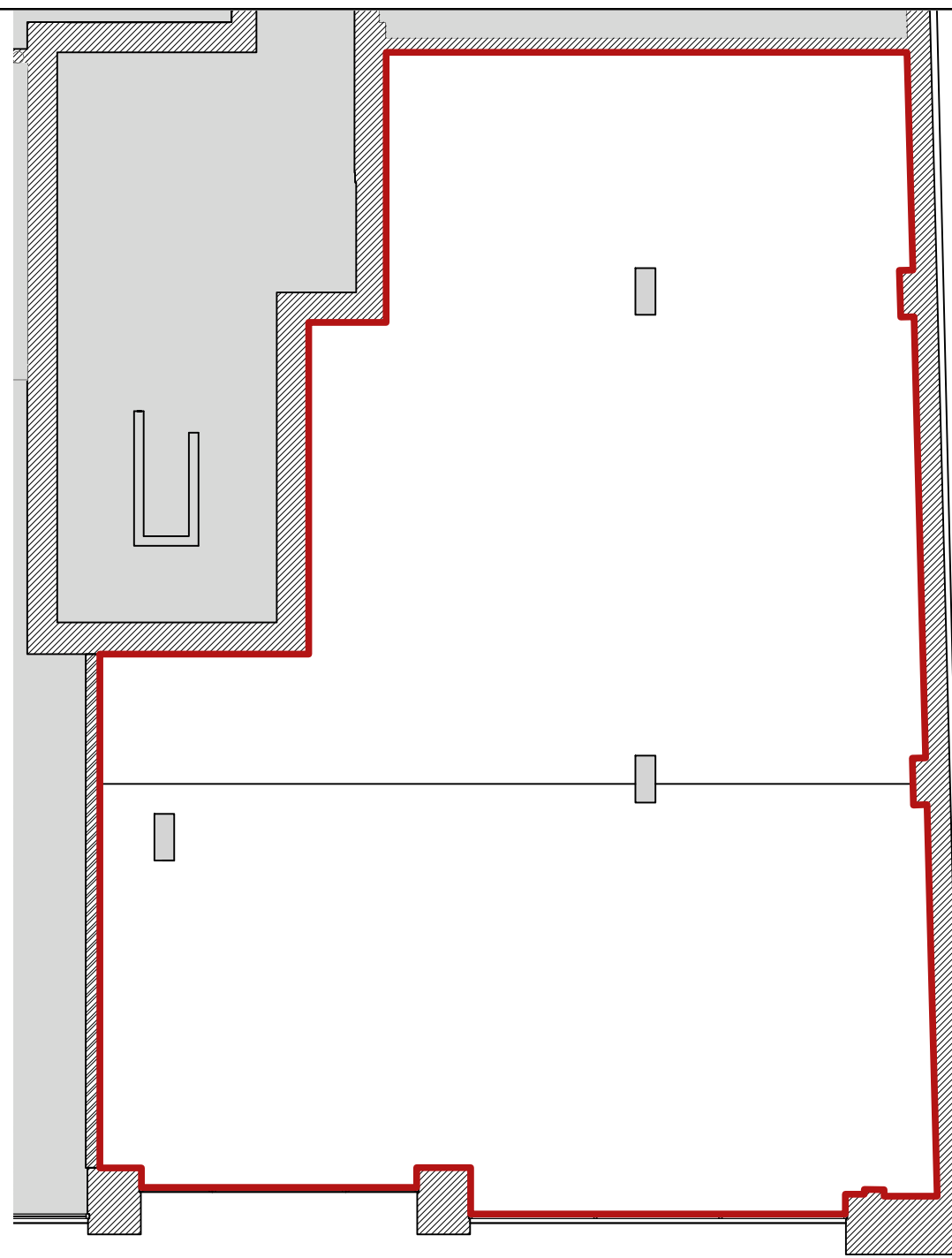


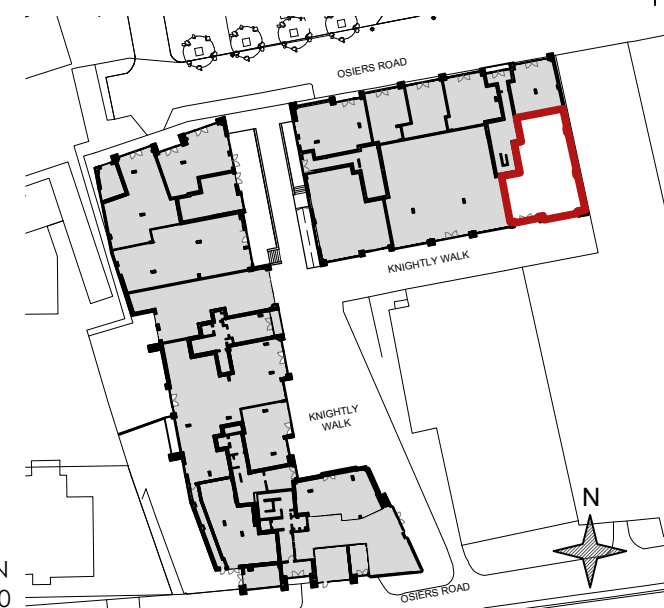
GROUND FLOOR PLAN  
@SCALE 1:100

KNIGHTLY WALK



MEZZANINE LEVEL  
@SCALE 1:100

KNIGHTLY WALK



SITE LOCATION  
@SCALE 1:1250

**PROJECT TITLE:**  
9 KNIGHTLY WALK, LONDON  
SW18 1HD

**DRAWING TITLE:**  
LEASE PLAN

**DRAWING NO:** BD572.PR.02 - LEASE

**DATE:** 17.02.17

**REVISION:** -

**SCALE:** 1:100 & 1:1250 (@A3  
LANDSCAPE)

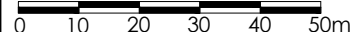
**DO NOT SCALE FROM THIS DRAWING  
CHECK ALL MEASUREMENTS ON SITE**

**NOTES:**

1:100 Scale



1:1250 Scale



**NOTES:**

- ALL DIMENSIONS ARE IN MILLIMETERS UNLESS OTHERWISE INDICATED.
- FIGURED DIMENSIONS TO BE TAKEN IN PREFERENCE TO SCALED MEASUREMENTS.
- CONTRACTOR IS TO CHECK ALL DIMENSIONS ON THE BUILDING SITE BEFORE COMMENCING WITH SHOP DRAWINGS OR INSTALLATION WORK.
- DO NOT SCALE FROM THIS DRAWING.
- LARGE SCALE DETAILS SUPERSEDE ALL OTHERS.
- PRIOR TO CONSTRUCTION, THE CONTRACTOR IS TO PROVIDE SHOP DRAWINGS FOR BARNES DESIGN'S APPROVAL.
- THIS DRAWING IS TO BE READ IN CONJUNCTION WITH THE BARNES DESIGN SPECIFICATIONS AND SCHEDULES.

©

THIS DRAWING HAS THE COPYRIGHT OF BARNES DESIGN AND MUST NOT BE RETAINED, COPIED OR USED WITHOUT BARNES DESIGN'S PERMISSION.

 **barnes  
design**

**a:** the mitre studios,  
98 charlmont road,  
london sw17 9ab

**t:** 0207 223 3332

**e:** info@barnes-design.com

**w:** www.barnes-design.com