



Commercial Property Consultants

Offices at High Wycombe and Marlow
For details of all available properties visit our website

PROPERTY PARTICULARS

PRELIMINARY PARTICULARS

A UNIQUE OPPORTUNITY TO OCCUPY A PROMINENTLY LOCATED BUILDING ON THE LONDON ROAD WITH THE BENEFIT OF CAR PARKING AND LARGE YARD / LOADING AREA

UNDERGOING MAJOR REFURBISHMENT

WAREHOUSE / TRADE COUNTER / SHOWROOM / RETAIL / MEDICAL / GYM / EDUCATIONAL & OTHER USES (SUBJECT TO PLANNING)

**FORMER SPEEDY HIRE UNIT
170 LONDON ROAD, HIGH WYCOMBE
BUCKS, HP11 1DQ**



TO LET

4,350 SQ. FT (404.11 SQ.M) APPROXIMATE GROSS INTERNAL AREA

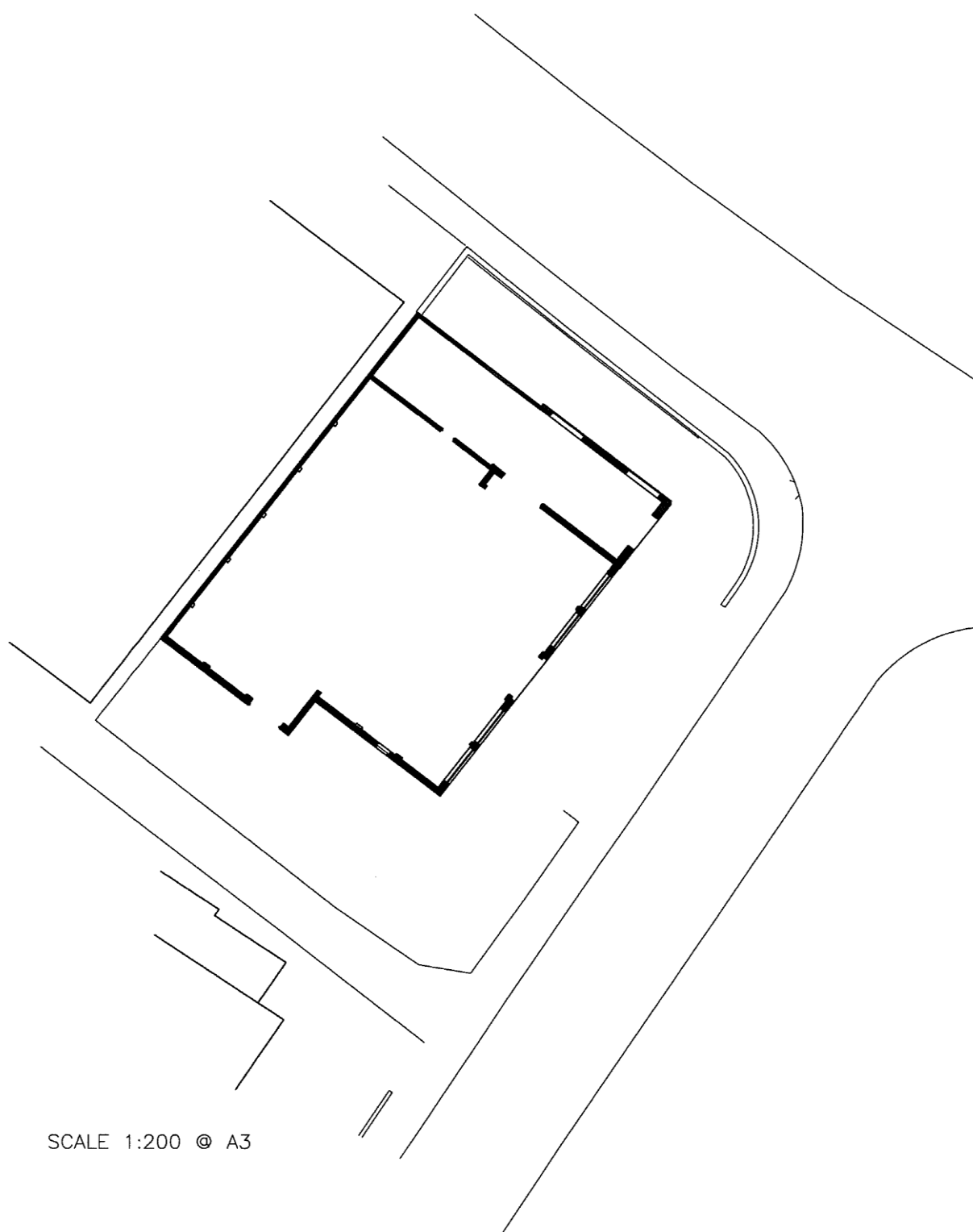
ENERGY PERFORMANCE RATING: To be confirmed following completion of refurbishment.

RATEABLE VALUE: £26,750

FOR FURTHER INFORMATION CONTACT SOLE AGENTS: -

**Duncan Bailey Kennedy
Adrian Dolan / Tom Good / Elliot Mackay
Telephone: 01494 450951
adriand@dbk.co.uk / tomg@dbk.co.uk / elliottm@dbk.co.uk**





SCALE 1:200 © A3

Draft Site Plan