



BUILDING SURVEYS RENT REVIEWS LEASE RENEWALS VALUATIONS MANAGEMENT INVESTMENTS LETTINGS
LETTINGS AGENCIES LEASE RENEWALS VALUATIONS MANAGEMENT INVESTMENTS BUILDING SURVEYS SALES

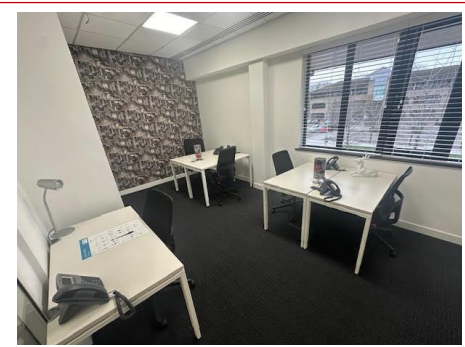
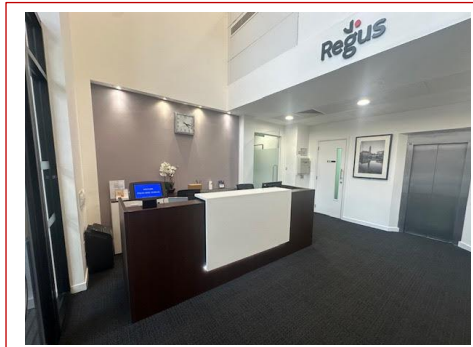
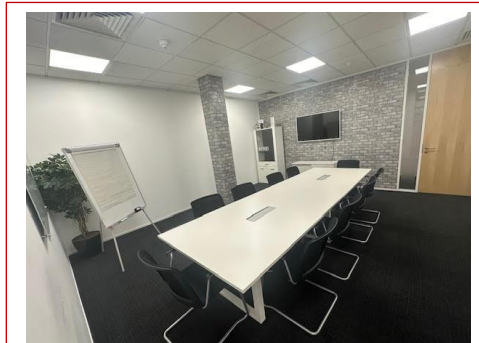
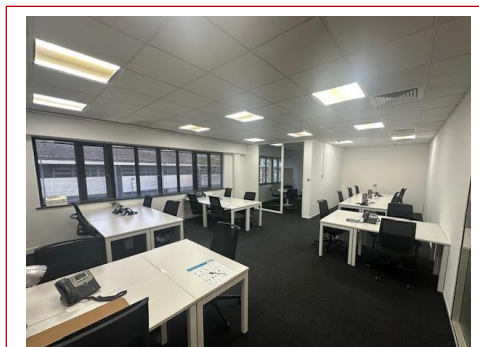
Commercial Property Consultants

Offices at High Wycombe and Marlow
For details of all available properties visit our website

PROPERTY PARTICULARS

Office and Co-Working Space

**Aston Court
Kingsmead Business Park
Frederick Place, Loudwater
High Wycombe
Bucks HP11 1JU**



TO LET

LOCATION - Rub shoulders with international companies in an idyllic setting that is well-connected for travel. Kingsmead Business Park workspace in High Wycombe is within close proximity of the M40 and M25, providing easy access to Birmingham and London.

Set against a backdrop of the Chilterns' Area of Outstanding Natural Beauty, this impressive open-plan office building has been designed with a bright and contemporary interior. When you need a break, enjoy a stroll around High Wycombe town centre which is just two miles away.

DESCRIPTION – Aston Court offers the following:-

- | | | |
|----------------------------------|-----------------------|---------------------------|
| ❖ Edge of town location | ❖ Suspended ceilings | ❖ Showers |
| ❖ Close to major transport links | ❖ Disabled facilities | ❖ Vending machines |
| ❖ On-site lunch restaurant | ❖ Meeting rooms | ❖ 24 Hour CCTV monitoring |
| ❖ Sandwich service | ❖ Raised floors | ❖ Break-out areas |

AMENITIES

- Private fully-furnished office for individuals or teams – customised to match your brand and create your own office suite with private amenities – for teams of all sizes.
- Coworking – be part of a vibrant coworking community with dedicated desk or hot-desking options – thousands of locations – book your hot desk via the Regus app – network and collaborate.
- Virtual offices – build an instant presence wherever you need to be, at prime business locations – thousands of locations – use of global business lounges – phone answering available.
- Meeting Rooms – Professional rooms for your next training session, interview or pitch, wherever you need it – a wide range of different sized meeting rooms – presentation equipment available.
- Membership – Work wherever you need to with flexible access to Regus' global network of workspaces – Join via the Regus app – membership for all budgets – work anywhere in the world.

TERMS - Contract terms are flexible and tailored to your specific needs.

RENT - Professional business solutions starting from:-

Office Space -	From £169 per person per month
Coworking -	From £159 per person per month
Virtual Offices -	From £125 per month
Meeting Rooms -	From £25 per hour
Day Offices -	From £49 per day
Office Membership -	From £189 per month

Note: Private Office and Dedicated Desk access is 24/7 access, whilst Memberships access is during reception hours.

ENERGY PERFORMANCE RATING: E - 104.

VIEWING – For further information or to arrange a viewing, please contact:-

Duncan Bailey Kennedy
FAO: Jane Hathaway / Adrian Dolan
Telephone: 01494 450951
Email: janeh@dbk.co.uk / adriand@dbk.co.uk



Ref: JKH / 0224