

Industrial Unit TO LET

Flex Unit 1-3 Silverstone Park

Providing 11,602 sq ft (1,078 sq m)

MEPC



SILVERSTONE PARK, SILVERSTONE, TOWCESTER, NN12 8GX

FROM HERE WE CHANGE THE WORLD



Silverstone Park provides the perfect location for companies that need a central location within the Silverstone Technology Cluster, to access skills and consider new business opportunities.

Occupying companies also benefit from being in close proximity to the Park's four world-class specialist engineering facilities:

- ✓ [Digital Manufacturing Centre](#)
- ✓ [Silverstone Sports Engineering Hub](#)
- ✓ [Electro-Magnetic Testing/ Anechoic Chambers](#)
- ✓ [Metrology Facility with Hexagon Manufacturing Intelligence](#)

Flex Unit 1-3, is situated in a prominent location along the Dadford Road and will be available To Let shortly. We welcome conversations with potential occupiers looking to join our growing community.

SPECIFICATION

- ✓ Detached hybrid unit with 24/7 access
- ✓ Full glazed feature atrium reception
- ✓ Fitted offices to first floor, carpet, suspended ceiling, air conditioning
- ✓ Purpose built simulator room
- ✓ High quality workshop space to the ground floor
- ✓ Machine room and storage
- ✓ Roller shutter door access
- ✓ 3 phase power
- ✓ Superfast broadband connectivity and fibre on site
- ✓ Allocated parking spaces



Indicative workshop



Indicative office fit-out

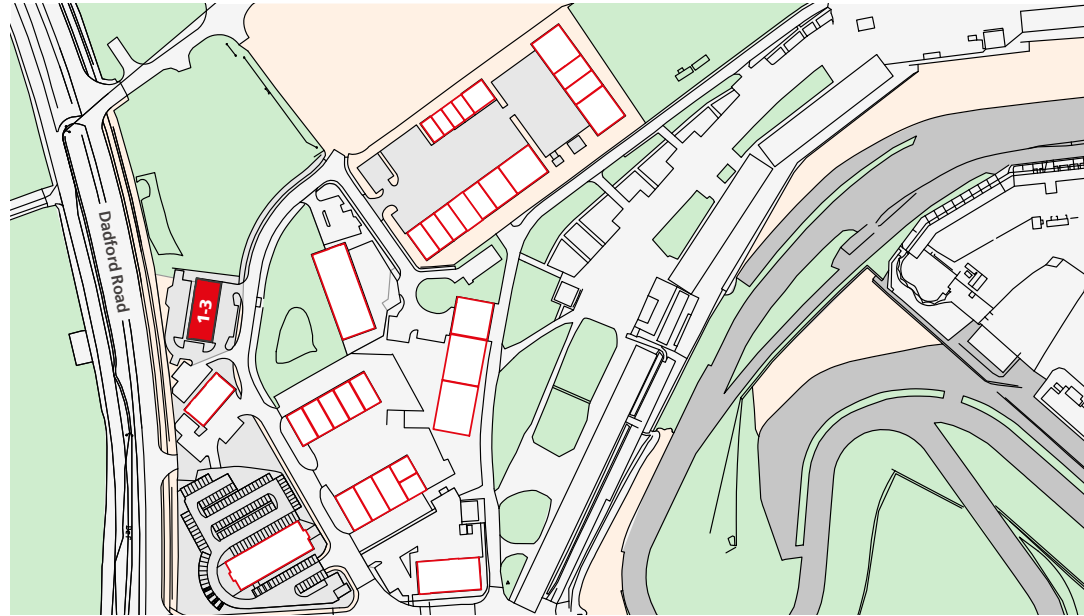
ACCOMMODATION

The building provides the following approximate gross internal floor areas:

	Description	sq ft	sq m
Flex Unit 1-3	Ground Floor	5,847	543
	First Floor	5,755	535
	TOTAL	11,602	1,078

MISREPRESENTATION ACT 1967

Whilst all the information in these particulars is believed to be correct, neither the agent nor their client guarantee its accuracy, nor is it intended to form part of any contract. All areas quoted are approximate GIA, September 2022.

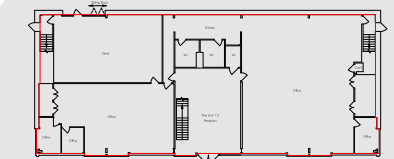
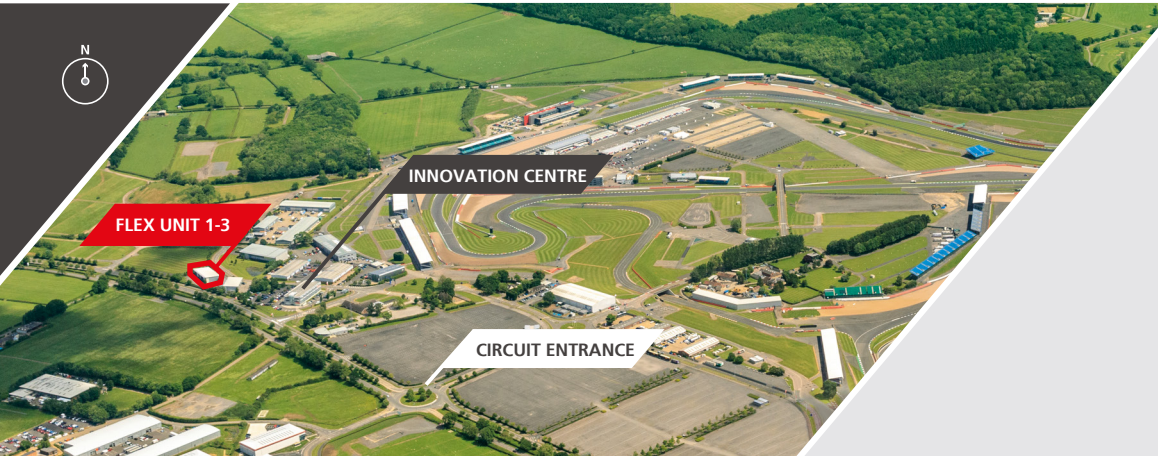


PLANNING

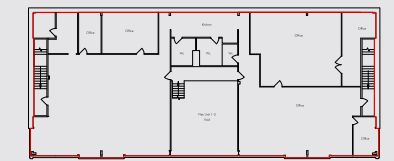
B1 (c) , B2 or B8 uses.

SUSTAINABILITY

This building has an EPC C Rating.



Ground Floor



First Floor

For a viewing and further information, please contact:



Jamie Catherall DTRE
07718 242693
jamie.catherall@dtre.com



Jon Silversides Carter Jonas
07720 537141
jon.silversides@carterjonas.co.uk

Ollie Withers DTRE
07496 852526
ollie.withers@dtre.com



@SilverstonePark

silverstone-park.com

SILVERSTONE PARK, SILVERSTONE, TOWCESTER, NN12 8FU, UNITED KINGDOM

FROM HERE WE CHANGE THE WORLD