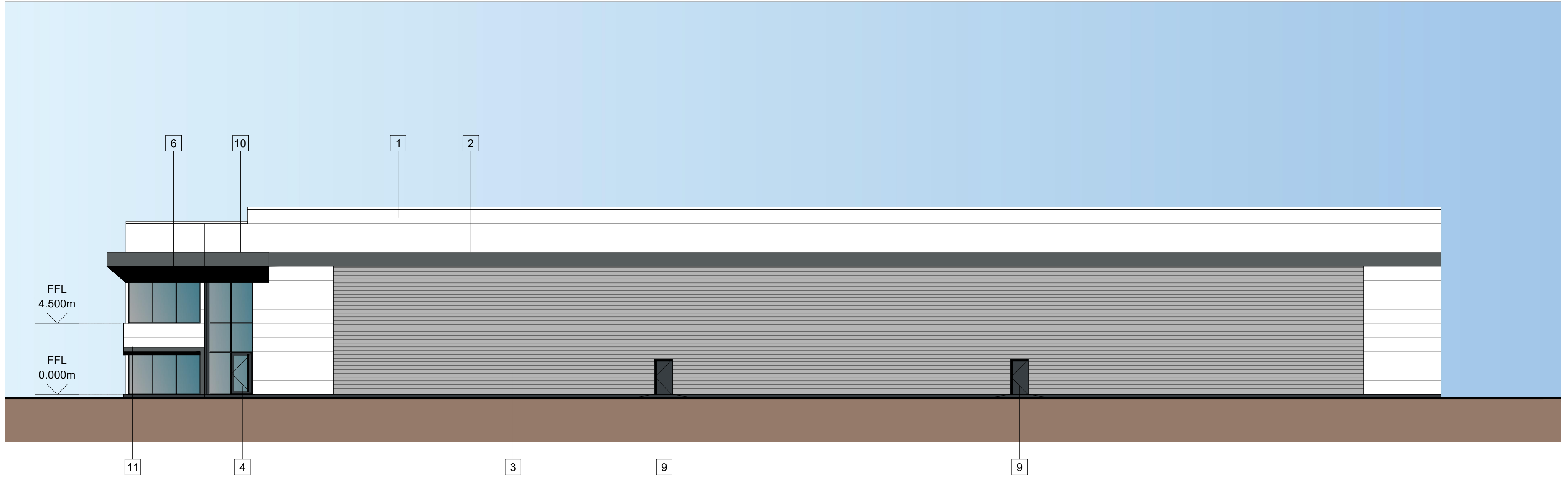
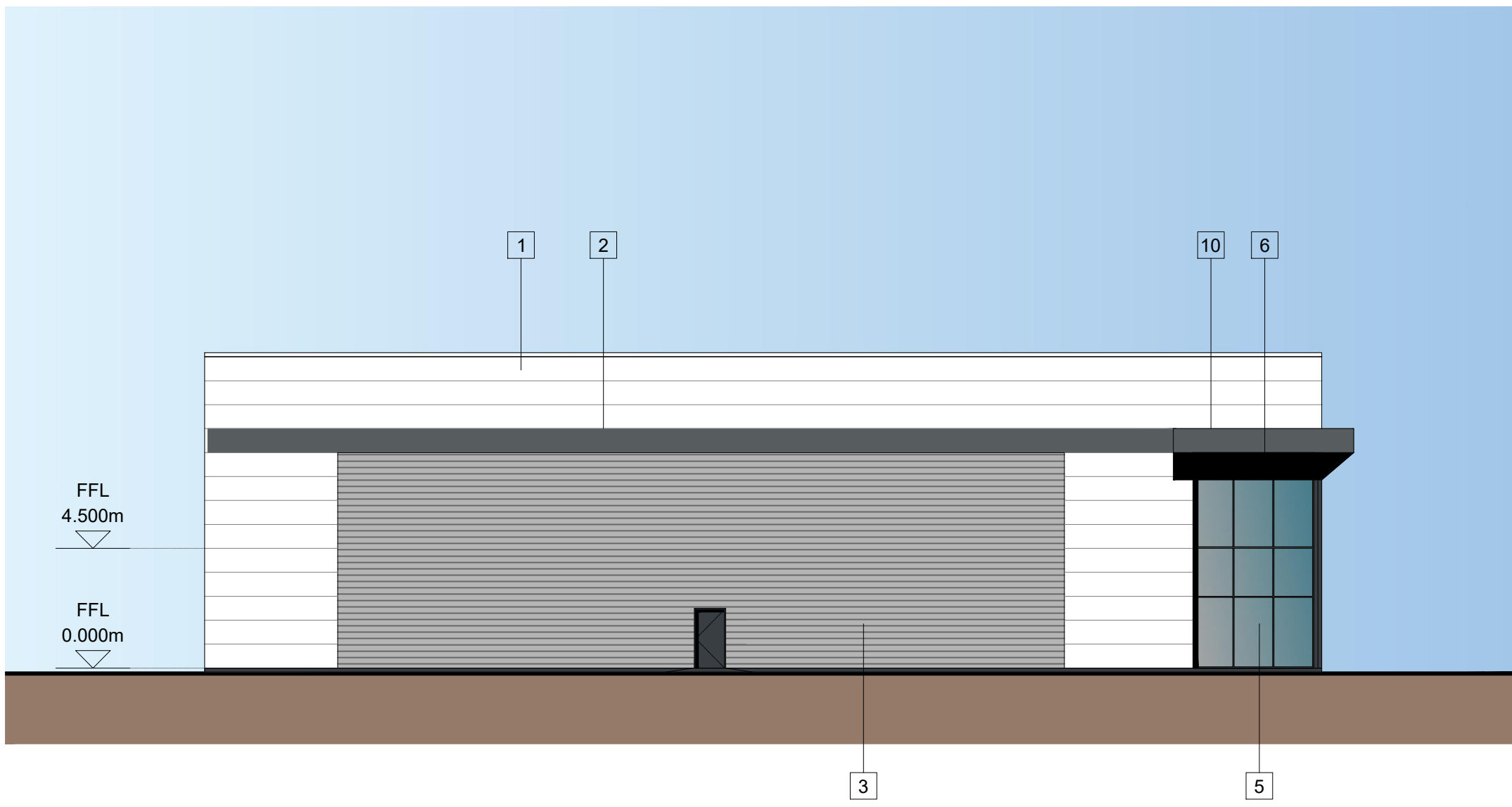


NORTHERN ELEVATION



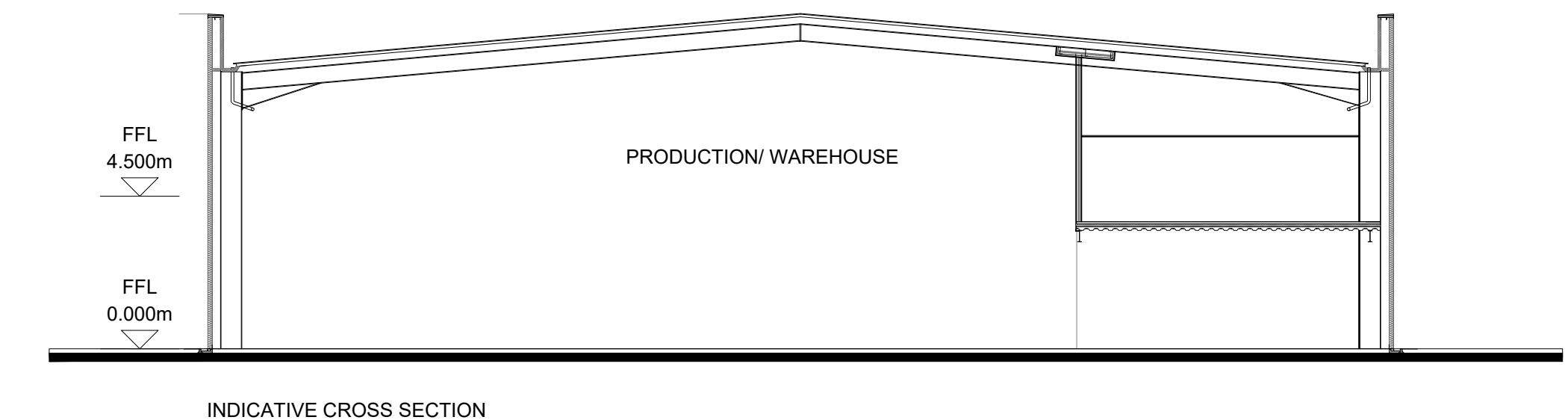
WESTERN ELEVATION



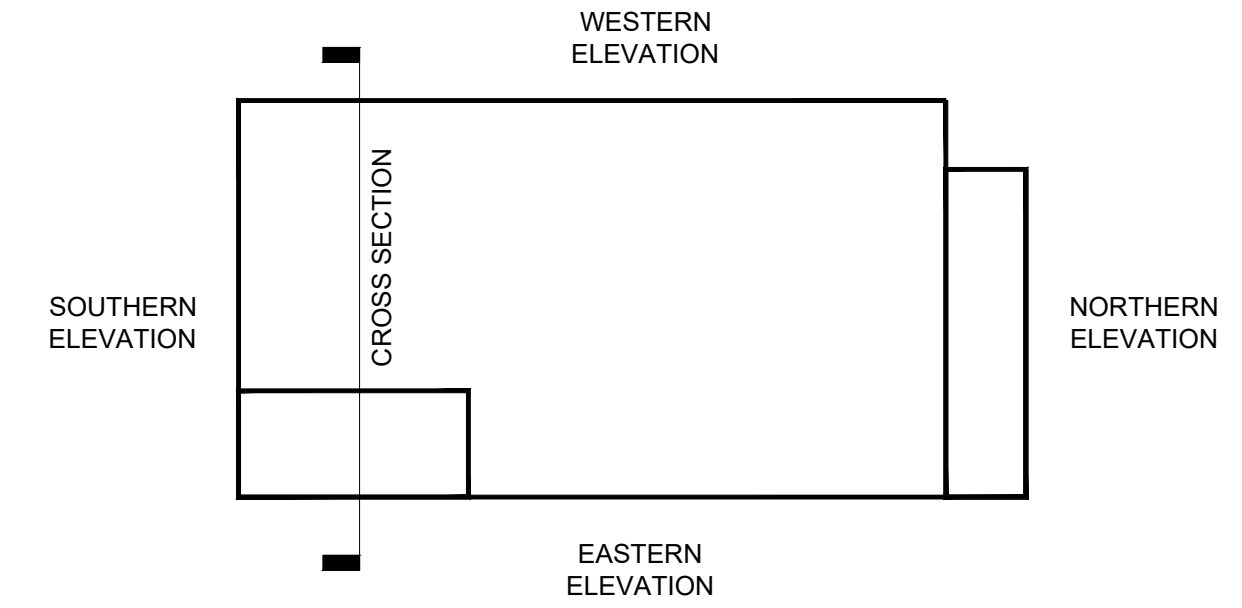
SOUTHERN ELEVATION



EASTERN ELEVATION



INDICATIVE CROSS SECTION



REFERENCE FLOOR PLAN
NTS

- 1 HORIZONTAL MICRO RIB CLADDING (WHITE)
- 2 HORIZONTAL MICRORIB CLADDING (BASALT GREY RAL 7012)
- 3 HORIZONTAL PROFILED CLADDING (MID GREY)
- 4 ALUMINIUM FRAMED ENTRANCE DOORS POWDER COATED ANTHRACITE GREY RAL 7016
- 5 ALUMINIUM FRAMED WINDOWS POWDER COATED ANTHRACITE GREY RAL 7016
- 6 ALUMINIUM LOUVRED VENT POWDER COATED ANTHRACITE GREY RAL 7016
- 7 LOADING DOORS (INSULATED) ANTHRACITE GREY RAL 7016
- 8 STEEL BOLLARD (YELLOW)
- 9 STEEL PERSONNEL DOORS ANTHRACITE GREY RAL 7016
- 10 FEATURE CANOPY BASAL GREY RAL 7012
- 11 WINDOW FLASHING BASAL GREY RAL 7012

DRAFT

Client:
PINEBRIDGE



Project:
GUILDFORD
MIDDLETON INDUSTRIAL ESTATE

12 Warren Yard,
Warren Park,
Milton Keynes,
MK12 5HW
01908 305 248

Drawing Title:
PROPOSED ELEVATIONS
UNIT 2/3

Scale @ A1: 1:200
Checked by: JR
Date: APR 23
Job No: 11596
Stage: PL 013
Drawing No: *
Rev: *

Architecture
Planning
Master Planning
Urban Design
Interiors
Landscape

Issue Status:
Construction Preliminary
Information Approval
Tender

Offices
Woking
London
Milton Keynes
Warsaw

PRC Architecture & Planning

